



MLS 6626314 Lake Land

\$472,500

Description:

155 acres of paradise located only 12 miles NE of Detroit Lakes with lakeshore on Little Round Lake. This is an exceptional hunting property for deer, waterfowl, and bear. Mixed woods including birch, oak, maple, poplar, and more. Property has been surveyed. Property has some old buildings. Property sells as-is and is subject to court approval. Property may need title corrections, and an easement does run through the property. This property is tract A on the survey. Additional land available on a sperate listing see MLS:6626387. All offers must be submitted by Wed. Nov. 6th 2024 by 12pm central time.

Additional Details:

Lot Acres	155
Lot Dimensions	155 acres
School District	22
Taxes	\$2,404
Taxes with Assessments	\$2,404
Tax Year	2024

Additional Features:

Driving Directions:

From Detroit Lakes head north on Richwood Rd (Co rd 21) for 10.2 miles, turn right and head east on Co Rd 26/270th st for 2 miles, turn left on Killian Road and follow to the property on the right side.



Listed By:
Counselor Realty Detroit Lakes

Affinity Real Estate Inc. participates in the Regional Multiple Listing Service of Minnesota, Inc Broker Reciprocity (sm) program, allowing us to display other broker's listings on our website. All properties are subject to prior sale, change or withdrawal.



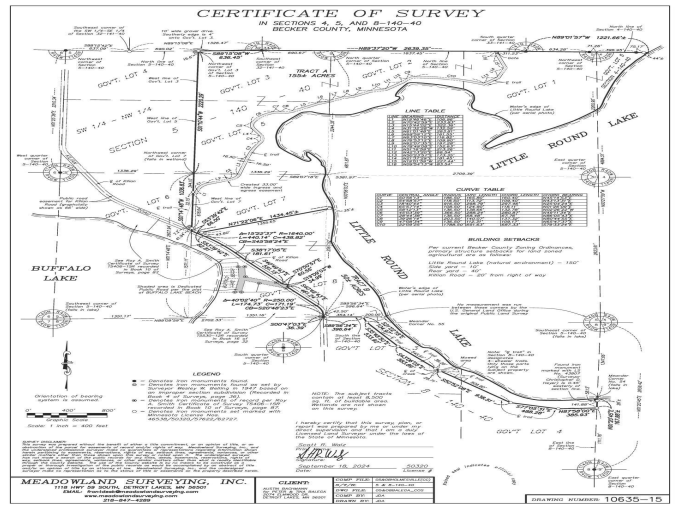
Call Affinity Real Estate

218-237-3333

info@affinityrealestate.com



Affinity Real Estate - 600 Park Avenue South - Park Rapids MN 56470



website: www.AffinityRealEstate.com | email: info@affinityrealestate.com | office: 218-237-3333 | fax:218-237-3377



\$472,500
 MLS 6626314 Lake Land
 XXXX Killian Rd
 Rochert MN 56578



website: www.AffinityRealEstate.com | email: info@affinityrealestate.com | office: 218-237-3333 | fax:218-237-3377



\$472,500
MLS 6626314 Lake Land
XXXX Killian Rd
Rochert MN 56578



website: www.AffinityRealEstate.com | email: info@affinityrealestate.com | office: 218-237-3333 | fax:218-237-3377



\$472,500
MLS 6626314 Lake Land
XXXX Killian Rd
Rochert MN 56578

