



MLS 6626387 Lake Land

\$132,500

Description:

50 Acres of land with frontage on Little Round Lake only 12 miles NE of Detroit Lakes. With access along Killian road this property would make an excellent building site, camping location, and investment opportunity! Property has been surveyed. Property sells as-is and is subject to court approval. Property may need title corrections. Additional land available see MLS:6626314. This is tract B on the survey. All offers must be submitted by Wed. Nov. 6th 2024 by 12pm central time.

Additional Details:

Lot Acres	50
Lot Dimensions	50 acres
School District	22
Taxes	\$432
Taxes with Assessments	\$432
Tax Year	2024

Additional Features:

Driving Directions:

From Detroit Lakes go North on Richwood Rd (Co hwy 21) for 10.2 miles, turn right and head east on Co Rd 26/270th st. go 2 miles and turn left on Killian Rd and follow to the property on the right side.



Listed By:
Counselor Realty Detroit Lakes

Affinity Real Estate Inc. participates in the Regional Multiple Listing Service of Minnesota, Inc Broker Reciprocity (sm) program, allowing us to display other broker's listings on our website. All properties are subject to prior sale, change or withdrawal.



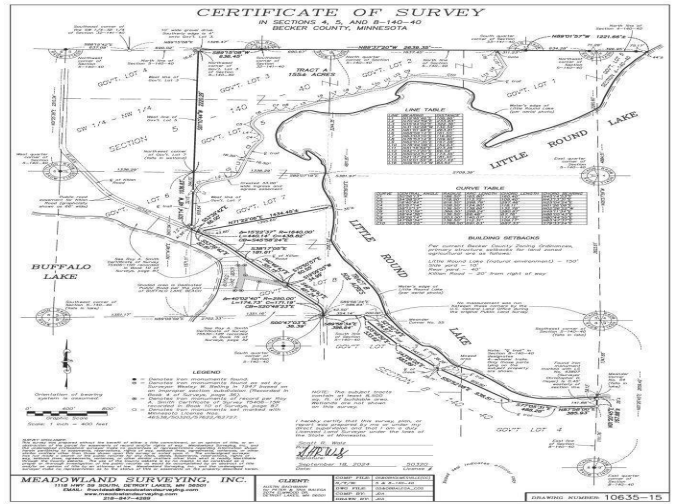
Call Affinity Real Estate

218-237-3333

info@affinityrealestate.com



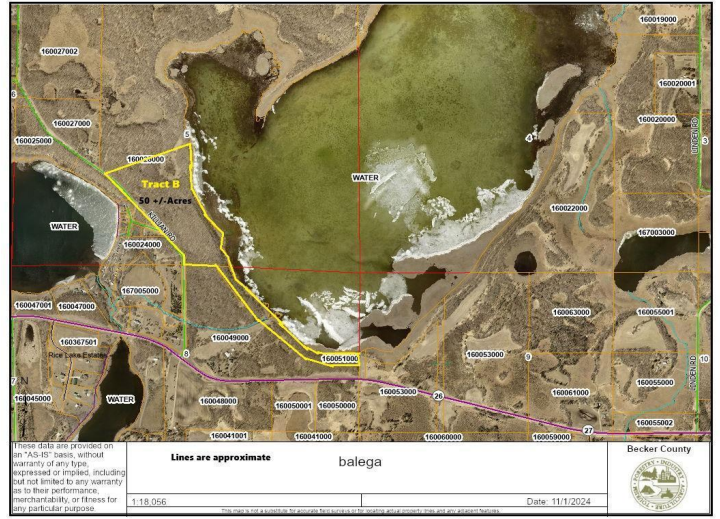
Affinity Real Estate - 600 Park Avenue South - Park Rapids MN 56470



website: www.AffinityRealEstate.com | email: info@affinityrealestate.com | office: 218-237-3333 | fax: 218-237-3377



\$132,500
 MLS 6626387 Lake Land
 XXXX Killian Rd
 Rochert MN 56578



website: www.AffinityRealEstate.com | email: info@affinityrealestate.com | office: 218-237-3333 | fax:218-237-3377



\$132,500
 MLS 6626387 Lake Land
 XXXX Killian Rd
 Rochert MN 56578