



MLS 6626530 Land

\$38,000

2.5 Acres
Raw Land

25 Turtle Bay Circle
Perham MN 56573

Status: Active

Description:

Welcome to Turtle Bay! This 2.5 acre, level lot is ready for your DREAM HOME. Enjoy life just outside of Perham in this beautiful, newer development. Only 5 minutes from downtown.

Additional Details:

Lot Acres	2.5
Lot Dimensions	308 x 361 x 303 x 356
School District	549
Taxes	\$310
Taxes with Assessments	\$310
Tax Year	2024

Additional Features:

Driving Directions:

From W. Main St. in Perham: turn NE on 450th St then N on 425th Ave. Property is located approx .2 miles on the East side.



Listed By:
HomeSmart Adventure Realty

Affinity Real Estate Inc. participates in the Regional Multiple Listing Service of Minnesota, Inc Broker Reciprocity (sm) program, allowing us to display other broker's listings on our website. All properties are subject to prior sale, change or withdrawal.



Call Affinity Real Estate

218-237-3333

info@affinityrealestate.com



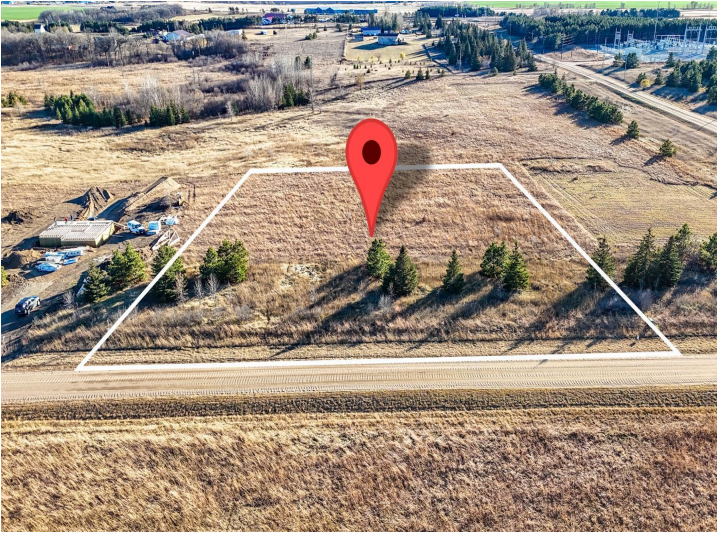
Affinity Real Estate - 600 Park Avenue South - Park Rapids MN 56470



website: www.AffinityRealEstate.com | email: info@affinityrealestate.com | office: 218-237-3333 | fax:218-237-3377



\$38,000
MLS 6626530 Land
25 Turtle Bay Circle
Perham MN 56573



website: www.AffinityRealEstate.com | email: info@affinityrealestate.com | office: 218-237-3333 | fax: 218-237-3377



\$38,000
 MLS 6626530 Land
 25 Turtle Bay Circle
 Perham MN 56573