



MLS 6626869 Land

\$120,000

40 Acres
Raw Land

TBD 140th
Menahga MN 56464

Status: Hold

Description:

Don't miss this incredible opportunity to acquire a gorgeous 40-acre parcel that has been cherished by the same family for over 80 years! With a perfect blend of open space and woodlands, this land offers spots for deer plots and areas suitable for hay production. Enjoy the beauty of Kettle Creek running through the NW corner. This unique gem is now available at a price below its appraised value. Adjoining 45 acres and farm site are also listed for sale.

Additional Details:

Lot Acres	40
Lot Dimensions	1300x1300x1300x1300
School District	821
Taxes	\$314
Taxes with Assessments	\$314
Tax Year	2024

Additional Features:

Driving Directions:

South of Park Rapids on 71 approximately 9 miles. Right on County 16 approximately 2.5 miles. Left on 590th Ave., Right on 140th Street to property.



Listed By:
Wolff & Simon Real Estate

Affinity Real Estate Inc. participates in the Regional Multiple Listing Service of Minnesota, Inc Broker Reciprocity (sm) program, allowing us to display other broker's listings on our website. All properties are subject to prior sale, change or withdrawal.



Call Affinity Real Estate

218-237-3333

info@affinityrealestate.com



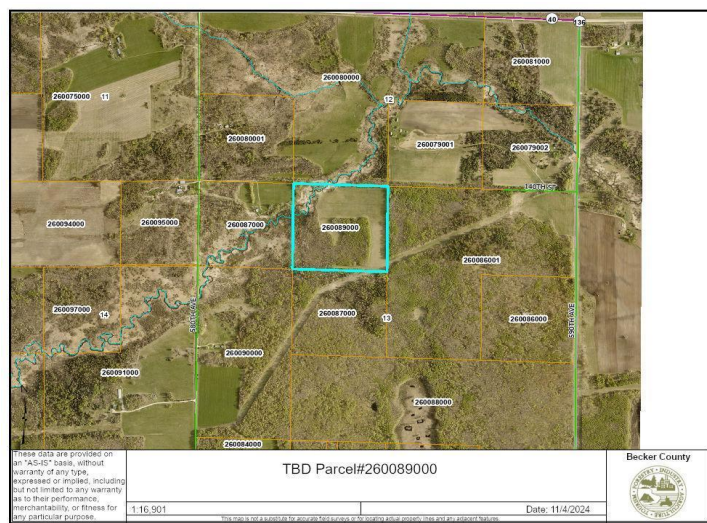
Affinity Real Estate - 600 Park Avenue South - Park Rapids MN 56470



website: www.AffinityRealEstate.com | email: info@affinityrealestate.com | office: 218-237-3333 | fax:218-237-3377



\$120,000
MLS 6626869 Land
TBD 140th
Menahga MN 56464



website: www.AffinityRealEstate.com | email: info@affinityrealestate.com | office: 218-237-3333 | fax:218-237-3377



\$120,000
 MLS 6626869 Land
 TBD 140th
 Menahga MN 56464