



Parcel #260079002 - 13988 590th Ave



MLS 6626997 Land

**\$200,000**

45 Acres  
Raw Land

14002 590th Avenue  
Menahga MN 56464

Status: Hold

**Description:**

Don't miss this incredible opportunity to acquire a beautiful 45 acre farmstead that has been treasured by the same family for over 80 years! The property features a well-maintained barn built in 1900. Complete with a new roof, and a milk house that has been converted into a shower room. There is also an older house that would make a great hunting cabin, as well as a sauna and other out buildings. The property is equipped with wifi, and it offers a mix of open and wooded areas with Kettle Creek running through the Northwest corner. Adjacent 40 acres listed for \$120,000. MLS#6626869

**Additional Details:**

Lot Acres	45
Lot Dimensions	1414x1323
School District	821
Taxes	\$640
Taxes with Assessments	\$700
Tax Year	2024

**Additional Features:**

**Driving Directions:**

South of Park Rapids on 71, approximately 9 miles. Right on County 16 approximately 2.5 miles. Left on 590th Ave. Right on 140th Street to property.



Listed By:  
Wolff & Simon Real Estate

Affinity Real Estate Inc. participates in the Regional Multiple Listing Service of Minnesota, Inc Broker Reciprocity (sm) program, allowing us to display other broker's listings on our website. All properties are subject to prior sale, change or withdrawal.



Call Affinity Real Estate

**218-237-3333**

[info@affinityrealestate.com](mailto:info@affinityrealestate.com)



Affinity Real Estate - 600 Park Avenue South - Park Rapids MN 56470



Parcel #260079002 - 13988 590th Ave



Parcel #260079002 - 13988 590th Ave



Parcel #260079002 - 13988 590th Ave



Parcel #260079002 - 13988 590th Ave



Parcel #260079002 - 13988 590th Ave



Parcel #260079002 - 13988 590th Ave

website: [www.AffinityRealEstate.com](http://www.AffinityRealEstate.com) | email: [info@affinityrealestate.com](mailto:info@affinityrealestate.com) | office: 218-237-3333 | fax:218-237-3377



**\$200,000**  
MLS 6626997 Land  
14002 590th Avenue  
Menahga MN 56464



Parcel #260079002 - 13988 590th Ave



website: [www.AffinityRealEstate.com](http://www.AffinityRealEstate.com) | email: [info@affinityrealestate.com](mailto:info@affinityrealestate.com) | office: 218-237-3333 | fax:218-237-3377



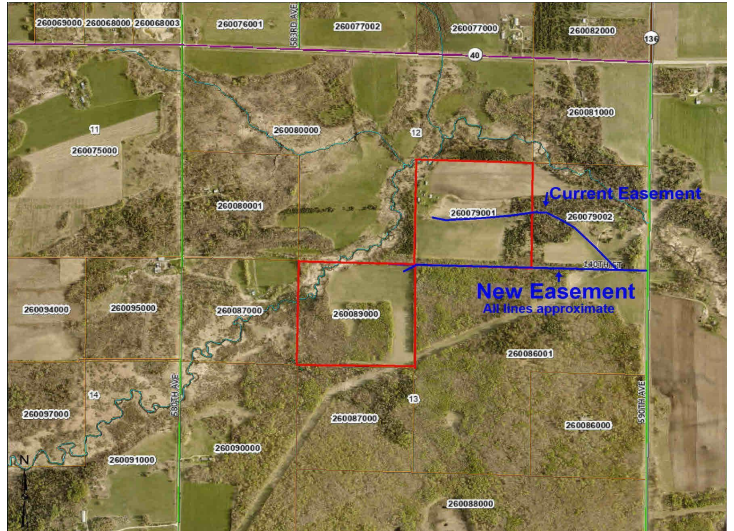
**\$200,000**  
MLS 6626997 Land  
14002 590th Avenue  
Menahga MN 56464



website: [www.AffinityRealEstate.com](http://www.AffinityRealEstate.com) | email: [info@affinityrealestate.com](mailto:info@affinityrealestate.com) | office: 218-237-3333 | fax: 218-237-3377

**Affinity**  
REAL ESTATE INC

**\$200,000**  
MLS 6626997 Land  
14002 590th Avenue  
Menahga MN 56464



website: [www.AffinityRealEstate.com](http://www.AffinityRealEstate.com) | email: [info@affinityrealestate.com](mailto:info@affinityrealestate.com) | office: 218-237-3333 | fax: 218-237-3377



**\$200,000**  
 MLS 6626997 Land  
 14002 590th Avenue  
 Menahga MN 56464