



MLS 6628012 Lake Land

**\$375,000**

**Description:**

With level elevation to 665 feet of sandy shoreline, rare properties like this do not come along very often. The property totals 9.3 acres, with 2.2 acres buildable, and the remaining 7.1 acres providing a low land privacy buffer. This would make an amazing location to build your dream home on Leech Lake. Lot has been surveyed and cleared for viewing with a temporary board walk to the lakeshore. Click on the Virtual Tour icon for amazing aerial views of the property.

**Additional Details:**

Lot Acres	9.3
Lot Dimensions	665x1320x200x900
School District	115
Taxes	(unreported)
Taxes with Assessments	(unreported)
Tax Year	2024

**Additional Features:**

**Driving Directions:**

From Cass Lake: 12 miles east on Hwy 2 to Sucker Bay Rd; 8.5 miles south on Sucker Bay Rd to Ottertail Point Dr; 1.8 miles south on Ottertail Point Dr to #11095; Sign on gate and lot.



Listed By:  
Cedar Point Realty -Walker

Affinity Real Estate Inc. participates in the Regional Multiple Listing Service of Minnesota, Inc Broker Reciprocity (sm) program, allowing us to display other broker's listings on our website. All properties are subject to prior sale, change or withdrawal.



**Call Affinity Real Estate**

**218-237-3333**

**info@affinityrealestate.com**



**Affinity Real Estate - 600 Park Avenue South - Park Rapids MN 56470**





website: [www.AffinityRealEstate.com](http://www.AffinityRealEstate.com) | email: [info@affinityrealestate.com](mailto:info@affinityrealestate.com) | office: 218-237-3333 | fax:218-237-3377



**\$375,000**  
MLS 6628012 Lake Land  
11095 Ottertail Point Drive  
Cass Lake MN 56633



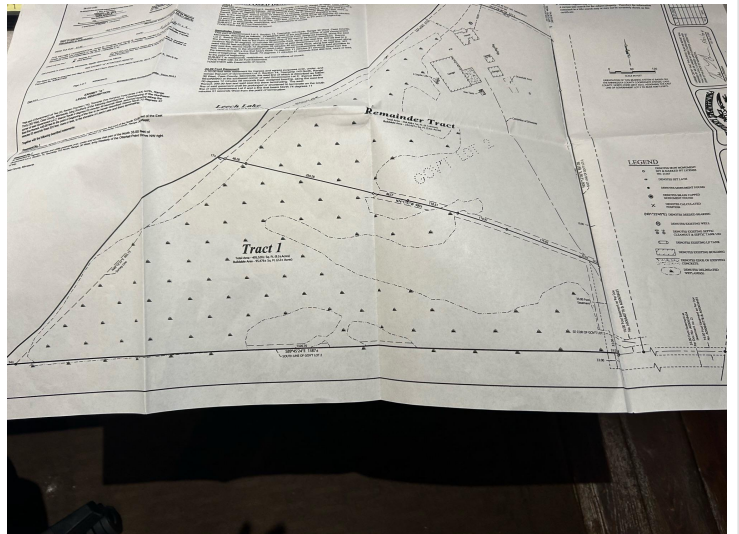


website: [www.AffinityRealEstate.com](http://www.AffinityRealEstate.com) | email: [info@affinityrealestate.com](mailto:info@affinityrealestate.com) | office: 218-237-3333 | fax: 218-237-3377



**\$375,000**  
MLS 6628012 Lake Land  
11095 Ottertail Point Drive  
Cass Lake MN 56633





website: [www.AffinityRealEstate.com](http://www.AffinityRealEstate.com) | email: [info@affinityrealestate.com](mailto:info@affinityrealestate.com) | office: 218-237-3333 | fax:218-237-3377



**\$375,000**  
MLS 6628012 Lake Land  
11095 Ottertail Point Drive  
Cass Lake MN 56633