



MLS 6628562 Lake Home

\$925,000

2,016 sq ft
3 bedrooms
2 baths

23806 Greenleaf Drive
Park Rapids MN 56470

Waterfront: Big Sand

Status: Pending



Description:

Nestled on the shores of Big Sand Lake, a beautifully remodeled and refinished cabin awaits, boasting half log siding that exudes rustic charm. The wrap-around deck offers panoramic views of the lake, complemented by an outdoor stone firepit that provides warmth and ambiance on cool evenings. With 275 feet of pristine shoreline, this haven promises privacy and serenity. The property features cozy living quarters above the garage. Inside the cabin, custom cabinets and natural woodwork reflect the surrounding wilderness, complete with a wood-burning stone fireplace that adds to the cabin's allure, while cedar shakes on the exterior blend seamlessly with the tranquil environment. An extra lot ensures ample space for outdoor activities or future expansion. This idyllic retreat is a perfect blend of comfort and nature, offering a peaceful escape with all the modern amenities. Additional 18+ acres available.

Additional Details:

Year Built	1971
Lot Acres	2.32
Lot Dimensions	275x318xirrx305
Garage Stalls	2
School District	309
Taxes	\$4,910
Taxes with Assessments	\$5,120
Tax Year	2024

Additional Features:

Basement: Finished, Full, Walkout **Fuel:** Electric **Garage:** 2 **Heat:** Baseboard, Ductless Mini-Split, Fireplace(s) **Sewer:** Private Sewer, Tank with Drainage Field **Water:** Private **Air Conditioning:** Ductless Mini-Split

Driving Directions:

From Hwys 71/34 in Park Rapids, go East on 34 to a left on County 4. Go North to a right on County 40. Property will be on the right.



Listed By:
Wolff & Simon Real Estate

Affinity Real Estate Inc. participates in the Regional Multiple Listing Service of Minnesota, Inc Broker Reciprocity (sm) program, allowing us to display other broker's listings on our website. All properties are subject to prior sale, change or withdrawal.



Call Affinity Real Estate

218-237-3333

info@affinityrealestate.com



Affinity Real Estate - 600 Park Avenue South - Park Rapids MN 56470



website: www.AffinityRealEstate.com | email: info@affinityrealestate.com | office: 218-237-3333 | fax:218-237-3377



\$925,000
MLS 6628562 Lake Home
23806 Greenleaf Drive
Park Rapids MN 56470



website: www.AffinityRealEstate.com | email: info@affinityrealestate.com | office: 218-237-3333 | fax: 218-237-3377

Affinity
REAL ESTATE INC

\$925,000
MLS 6628562 Lake Home
23806 Greenleaf Drive
Park Rapids MN 56470



website: www.AffinityRealEstate.com | email: info@affinityrealestate.com | office: 218-237-3333 | fax:218-237-3377

Affinity
REAL ESTATE INC

\$925,000
MLS 6628562 Lake Home
23806 Greenleaf Drive
Park Rapids MN 56470



website: www.AffinityRealEstate.com | email: info@affinityrealestate.com | office: 218-237-3333 | fax:218-237-3377



\$925,000
MLS 6628562 Lake Home
23806 Greenleaf Drive
Park Rapids MN 56470



website: www.AffinityRealEstate.com | email: info@affinityrealestate.com | office: 218-237-3333 | fax:218-237-3377



\$925,000
MLS 6628562 Lake Home
23806 Greenleaf Drive
Park Rapids MN 56470



website: www.AffinityRealEstate.com | email: info@affinityrealestate.com | office: 218-237-3333 | fax:218-237-3377



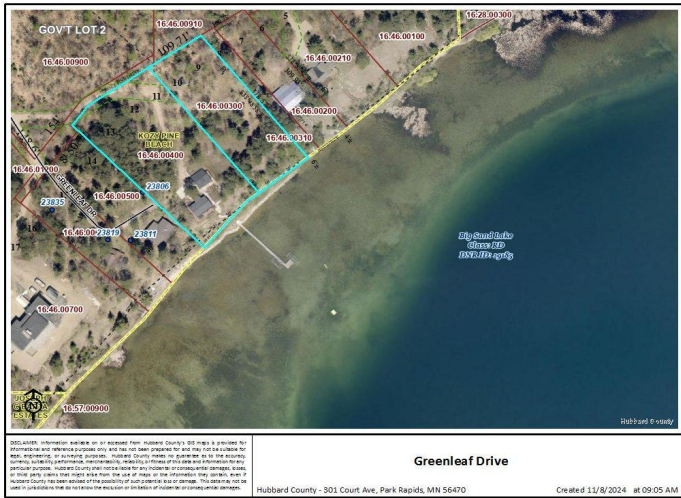
\$925,000
MLS 6628562 Lake Home
23806 Greenleaf Drive
Park Rapids MN 56470



website: www.AffinityRealEstate.com | email: info@affinityrealestate.com | office: 218-237-3333 | fax:218-237-3377



\$925,000
MLS 6628562 Lake Home
23806 Greenleaf Drive
Park Rapids MN 56470



website: www.AffinityRealEstate.com | email: info@affinityrealestate.com | office: 218-237-3333 | fax: 218-237-3377



\$925,000
 MLS 6628562 Lake Home
 23806 Greenleaf Drive
 Park Rapids MN 56470