



MLS 6628622 Lake Home

\$698,500

2,126 sq ft
4 bedrooms
2 baths

11082 County Road 34
Alexandria MN 56308

Waterfront: Ida

Status: Pending

Description:

Lake Ida retreat, with stunning sunset views, the perfect backdrop for lakeside living up here in the Alexandria Lakes Area. Situated on one of Douglas County's premier locations, this home features a low-maintenance 12' x 35' deck, ideal for entertaining or simply savoring quiet moments by the lake. With multiple spacious living areas and two cozy gas fireplaces, there's room to relax, unwind, and gather with friends and family. Recently upgraded with a large living room addition, a stylish new kitchen with modern appliances, refreshed bathrooms, new flooring, and a blacktop driveway, this home is truly move-in ready. It's designed for low-maintenance and year-round enjoyment. Plus, you'll enjoy the convenience of Carlos Creek Winery for a change of pace or when the weather isn't in your favor. Larger capacity electrical connection in the utility room, suitable for guests that need an RV connection. This property combines scenic beauty, convenience, and style.

Additional Details:

Year Built	1994
Lot Acres	0.62
Lot Dimensions	110, 240, 110, 251
Garage Stalls	2
School District	206
Taxes	\$4,284
Taxes with Assessments	\$4,414
Tax Year	2024

Additional Features:

Basement: Egress Window(s), Finished, Full, Concrete, Storage Space, Walkout **Fuel:** Electric, Propane **Garage:** 2 **Heat:** Baseboard, Ductless Mini-Split, Fireplace(s), Heat Pump **Sewer:** City Sewer/Connected **Water:** Private, Well **Air Conditioning:** Ductless Mini-Split

Driving Directions:

Co Rd 34 North past the Carlos Creek Winery to the property on the left.



Listed By:
Counselor Realty Inc of Alex

Affinity Real Estate Inc. participates in the Regional Multiple Listing Service of Minnesota, Inc Broker Reciprocity (sm) program, allowing us to display other broker's listings on our website. All properties are subject to prior sale, change or withdrawal.



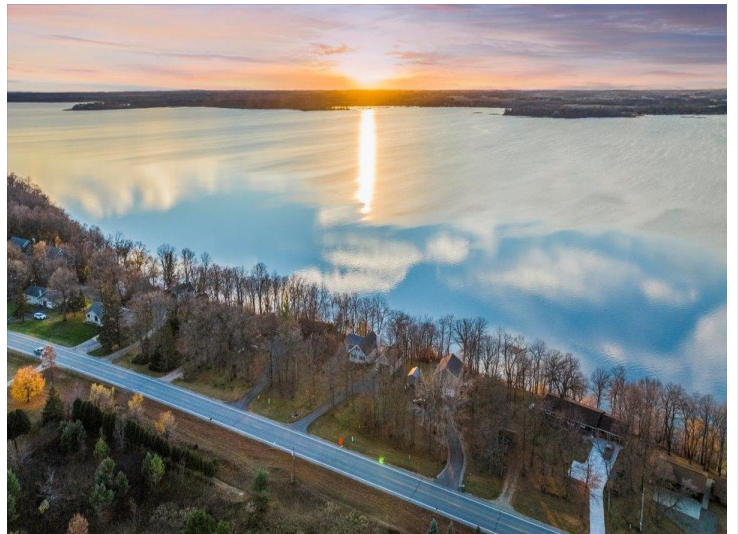
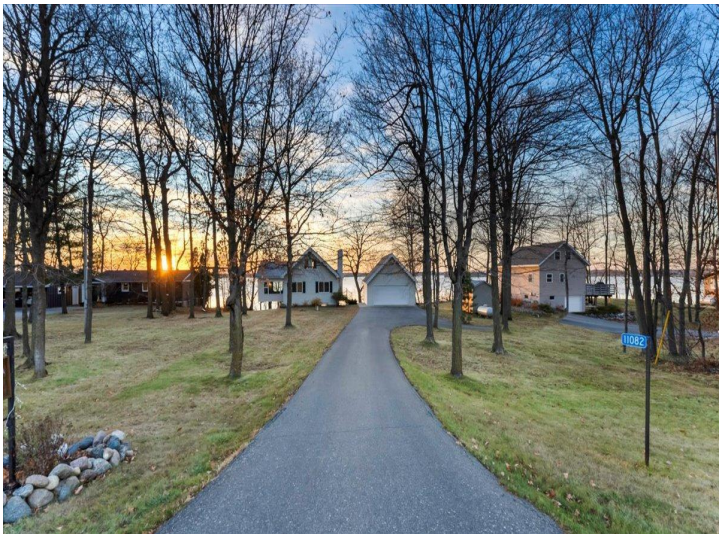
Call Affinity Real Estate

218-237-3333

info@affinityrealestate.com



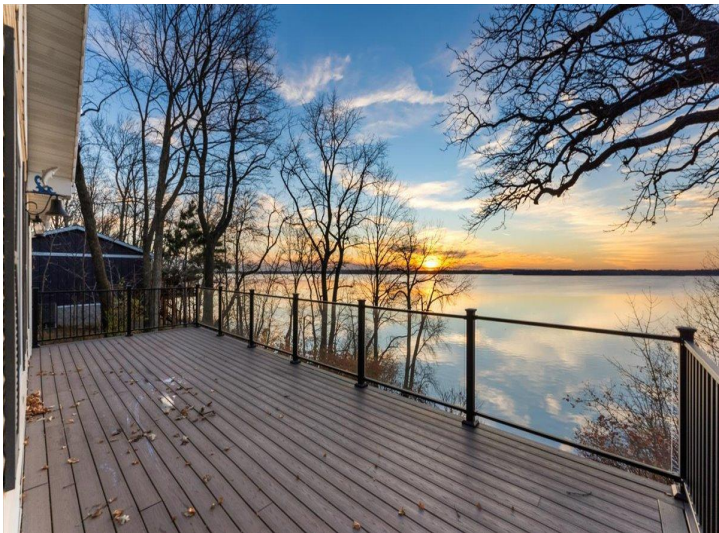
Affinity Real Estate - 600 Park Avenue South - Park Rapids MN 56470



website: www.AffinityRealEstate.com | email: info@affinityrealestate.com | office: 218-237-3333 | fax:218-237-3377



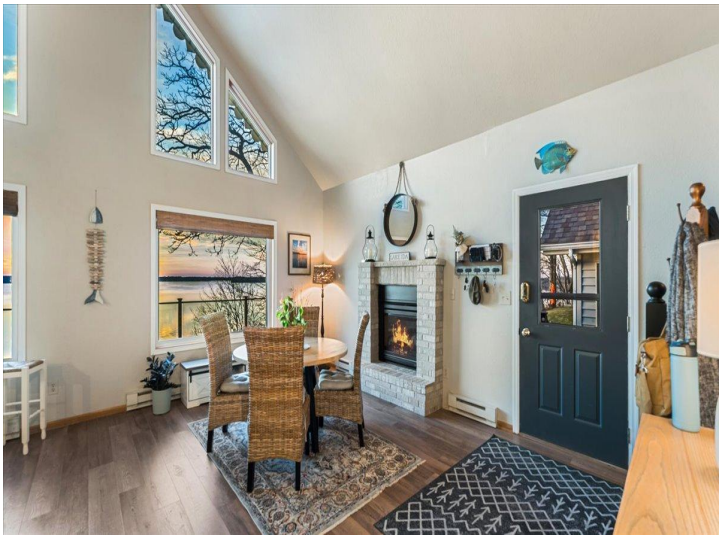
\$698,500
MLS 6628622 Lake Home
11082 County Road 34
Alexandria MN 56308



website: www.AffinityRealEstate.com | email: info@affinityrealestate.com | office: 218-237-3333 | fax:218-237-3377



\$698,500
MLS 6628622 Lake Home
11082 County Road 34
Alexandria MN 56308



website: www.AffinityRealEstate.com | email: info@affinityrealestate.com | office: 218-237-3333 | fax:218-237-3377

Affinity
REAL ESTATE INC

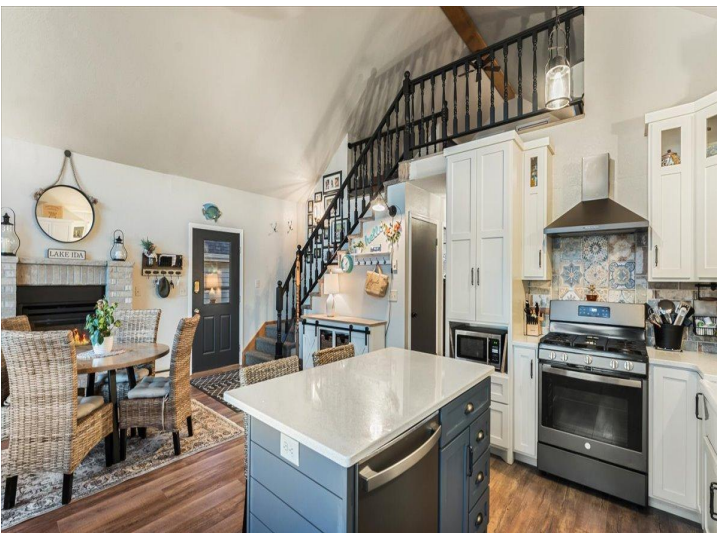
\$698,500
MLS 6628622 Lake Home
11082 County Road 34
Alexandria MN 56308



website: www.AffinityRealEstate.com | email: info@affinityrealestate.com | office: 218-237-3333 | fax: 218-237-3377

Affinity
REAL ESTATE INC

\$698,500
MLS 6628622 Lake Home
11082 County Road 34
Alexandria MN 56308



website: www.AffinityRealEstate.com | email: info@affinityrealestate.com | office: 218-237-3333 | fax: 218-237-3377

Affinity
REAL ESTATE INC

\$698,500
MLS 6628622 Lake Home
11082 County Road 34
Alexandria MN 56308



website: www.AffinityRealEstate.com | email: info@affinityrealestate.com | office: 218-237-3333 | fax: 218-237-3377

Affinity
REAL ESTATE INC

\$698,500
MLS 6628622 Lake Home
11082 County Road 34
Alexandria MN 56308



website: www.AffinityRealEstate.com | email: info@affinityrealestate.com | office: 218-237-3333 | fax:218-237-3377

Affinity
REAL ESTATE INC

\$698,500
MLS 6628622 Lake Home
11082 County Road 34
Alexandria MN 56308



website: www.AffinityRealEstate.com | email: info@affinityrealestate.com | office: 218-237-3333 | fax:218-237-3377



\$698,500
MLS 6628622 Lake Home
11082 County Road 34
Alexandria MN 56308



website: www.AffinityRealEstate.com | email: info@affinityrealestate.com | office: 218-237-3333 | fax:218-237-3377

Affinity
REAL ESTATE INC

\$698,500
MLS 6628622 Lake Home
11082 County Road 34
Alexandria MN 56308



website: www.AffinityRealEstate.com | email: info@affinityrealestate.com | office: 218-237-3333 | fax: 218-237-3377



\$698,500
MLS 6628622 Lake Home
11082 County Road 34
Alexandria MN 56308