



MLS 6628783 Residential

**\$649,900**

5,368 sq ft  
4 bedrooms  
4 baths

4203 Parkway Drive  
Nisswa MN 56468

Status: Active

**Description:**

Finally a home with endless possibilities! This magnificent main level living home is located amidst one of the lakes area's most beautiful wooded settings. With nothing but gracious space, it is sure to fulfill inspiration, entertainment and necessity. Be prepared to fall in love with the long list of amenities. Use your imagination in the bonus room and create a media room, bunk room or bedroom. Adventures await you on the trails running throughout the 2.5 acres of land and woods. Bonus! A spectacular garden! Newly renovated main floor office. Home features a large deck w/ gas line to gas fire pit and a full walkout basement patio with stunning views of the surrounding area. The spacious kitchen offers quartz countertops, stainless steel appliances and flows into expansive living area. The property includes both an oversized two-stall attached heated garage and a two-stall detached garage, with an unfinished bonus room above, ready for your personal touch. Situated near championship golf courses and surrounded by fine dining and lots of outdoor activities.

For sale sign not on property. Look for ranch/wood style fence.

**Additional Details:**

Year Built	2005
Lot Acres	2.64
Lot Dimensions	401x333
Garage Stalls	4
School District	181
Taxes	\$4,752
Taxes with Assessments	\$4,752
Tax Year	2023

**Additional Features:**

**Basement:** Finished, Full, Walkout **Fuel:** Natural Gas **Garage:** 4 **Heat:** Forced Air **Sewer:** Private Sewer, Tank with Drainage Field **Water:** Drilled, Well **Air Conditioning:** Central Air

**Driving Directions:**

From MN Highway 371, west on Edna Lake Rd to left on Parkway Dr.



Listed By:  
RES Realty

Affinity Real Estate Inc. participates in the Regional Multiple Listing Service of Minnesota, Inc Broker Reciprocity (sm) program, allowing us to display other broker's listings on our website. All properties are subject to prior sale, change or withdrawal.



Call Affinity Real Estate

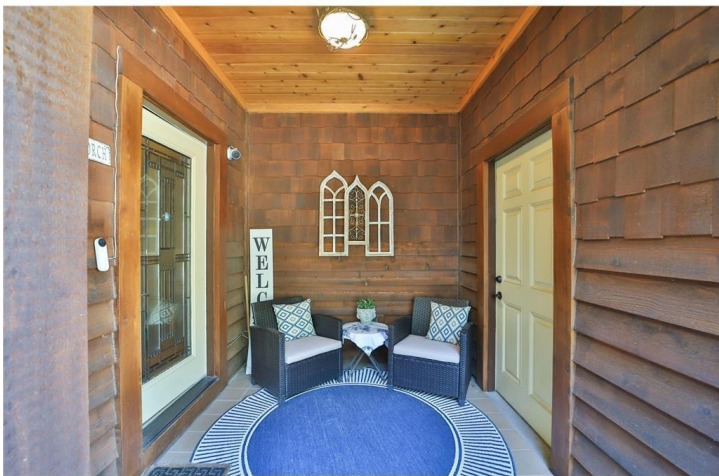
**218-237-3333**

[info@affinityrealestate.com](mailto:info@affinityrealestate.com)



Affinity Real Estate - 600 Park Avenue South - Park Rapids MN 56470





website: [www.AffinityRealEstate.com](http://www.AffinityRealEstate.com) | email: [info@affinityrealestate.com](mailto:info@affinityrealestate.com) | office: 218-237-3333 | fax:218-237-3377



**\$649,900**  
MLS 6628783 Residential  
4203 Parkway Drive  
Nisswa MN 56468





website: [www.AffinityRealEstate.com](http://www.AffinityRealEstate.com) | email: [info@affinityrealestate.com](mailto:info@affinityrealestate.com) | office: 218-237-3333 | fax:218-237-3377

**Affinity**  
REAL ESTATE INC

**\$649,900**  
MLS 6628783 Residential  
4203 Parkway Drive  
Nisswa MN 56468





website: [www.AffinityRealEstate.com](http://www.AffinityRealEstate.com) | email: [info@affinityrealestate.com](mailto:info@affinityrealestate.com) | office: 218-237-3333 | fax: 218-237-3377



**\$649,900**  
MLS 6628783 Residential  
4203 Parkway Drive  
Nisswa MN 56468





website: [www.AffinityRealEstate.com](http://www.AffinityRealEstate.com) | email: [info@affinityrealestate.com](mailto:info@affinityrealestate.com) | office: 218-237-3333 | fax: 218-237-3377

**Affinity**  
REAL ESTATE INC

**\$649,900**  
MLS 6628783 Residential  
4203 Parkway Drive  
Nisswa MN 56468





website: [www.AffinityRealEstate.com](http://www.AffinityRealEstate.com) | email: [info@affinityrealestate.com](mailto:info@affinityrealestate.com) | office: 218-237-3333 | fax:218-237-3377

**Affinity**  
REAL ESTATE INC

**\$649,900**  
MLS 6628783 Residential  
4203 Parkway Drive  
Nisswa MN 56468



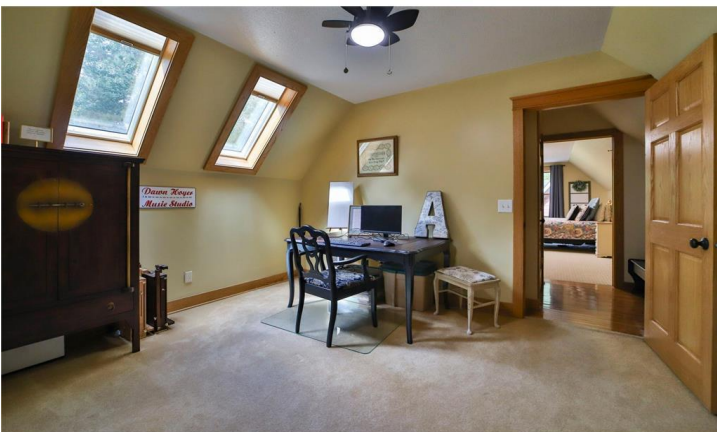


website: [www.AffinityRealEstate.com](http://www.AffinityRealEstate.com) | email: [info@affinityrealestate.com](mailto:info@affinityrealestate.com) | office: 218-237-3333 | fax:218-237-3377

**Affinity**  
REAL ESTATE INC

**\$649,900**  
MLS 6628783 Residential  
4203 Parkway Drive  
Nisswa MN 56468





website: [www.AffinityRealEstate.com](http://www.AffinityRealEstate.com) | email: [info@affinityrealestate.com](mailto:info@affinityrealestate.com) | office: 218-237-3333 | fax:218-237-3377

**Affinity**  
REAL ESTATE INC

**\$649,900**  
MLS 6628783 Residential  
4203 Parkway Drive  
Nisswa MN 56468





website: [www.AffinityRealEstate.com](http://www.AffinityRealEstate.com) | email: [info@affinityrealestate.com](mailto:info@affinityrealestate.com) | office: 218-237-3333 | fax:218-237-3377



**\$649,900**  
MLS 6628783 Residential  
4203 Parkway Drive  
Nisswa MN 56468