



MLS 6628878 Residential

**\$349,999**

1,890 sq ft  
3 bedrooms  
2 baths

6211 Birchmont Drive  
Bemidji MN 56601

Status: Pending

**Description:**

Charming 3-Bedroom home with modern upgrades and Prime Location. Welcome to your dream home! This beautifully updated 3-bed, 2-bath property combines modern amenities with a tranquil, secluded setting. Step inside to discover a spacious open kitchen featuring stunning new quartz countertops and sleek new cabinets, perfect for culinary enthusiasts. The interior boasts all-new trim, fresh paint, and luxurious LVP flooring throughout, creating a stylish and inviting atmosphere. Key features include: A cozy, all-new electric fireplace for warm, inviting evenings; all new, energy efficient heaters throughout the house; new appliances (range, fridge, dishwasher, microwave) ensuring convenience. Natural gas line has been run to the utility room and new homestead owners may qualify for a substantial rebate on a mini-split system. New stairs and railings, enhancing safety and aesthetics. Updated lighting fixtures and ceiling fans throughout; a new hot water heater, providing peace of mind. All new smoke and CO detectors for added safety. New closet systems for ample storage; Step outside to enjoy your large deck, complete with new railing and deck boards, perfect for entertaining or relaxing while overlooking your expansive, wooded lot. Additional highlights: Attached heated garage, perfect for keeping your vehicle and gear warm year-round, New concrete driveway for easy access, Direct access to the bike trail, ideal for outdoor enthusiasts and just minutes from the boat landing on Lake Bemidji for endless recreational opportunities. Close to all the vibrant city of Bemidji has to offer, yet tucked away for your privacy. Don't miss out on this fantastic opportunity to own a home that truly has it all! Schedule a showing today!

**Additional Details:**

Year Built	1977
Lot Acres	1.19
Lot Dimensions	225x225x173x257
Garage Stalls	1
School District	31
Taxes	\$2,588
Taxes with Assessments	\$2,588
Tax Year	2024

**Additional Features:**

**Basement:** Block, Daylight/Lookout Windows, Finished, Concrete, Sump Pump, Walkout, Fuel: Electric, Garage: 1, Heat: Baseboard, Sewer: City  
**Water:** City Water - In Street **Air Conditioning:** None



Listed By:  
Better Homes and Gardens Real Estate First Cho



**Call Affinity Real Estate**

**218-237-3333**

[info@affinityrealestate.com](mailto:info@affinityrealestate.com)

Affinity Real Estate Bemidji, Park Rapids, Bemidji, Akeley, and Shullsburg, MN. Real Estate listings on NE. Rd. on Bemidji west to Birchmont Dr. East on Birchmont. 6211 will be on Service of Minnesota, Inc Broker Reciprocity (sm) program, allowing us to display other broker's listings on our website. All properties are subject to prior sale, change or withdrawal.



**Affinity Real Estate - 600 Park Avenue South - Park Rapids MN 56470**



website: [www.AffinityRealEstate.com](http://www.AffinityRealEstate.com) | email: [info@affinityrealestate.com](mailto:info@affinityrealestate.com) | office: 218-237-3333 | fax: 218-237-3377

**Affinity**  
REAL ESTATE INC

**\$349,999**  
MLS 6628878 Residential  
6211 Birchmont Drive  
Bemidji MN 56601



website: [www.AffinityRealEstate.com](http://www.AffinityRealEstate.com) | email: [info@affinityrealestate.com](mailto:info@affinityrealestate.com) | office: 218-237-3333 | fax:218-237-3377

**Affinity**  
REAL ESTATE INC

**\$349,999**  
MLS 6628878 Residential  
6211 Birchmont Drive  
Bemidji MN 56601



website: [www.AffinityRealEstate.com](http://www.AffinityRealEstate.com) | email: [info@affinityrealestate.com](mailto:info@affinityrealestate.com) | office: 218-237-3333 | fax: 218-237-3377

**Affinity**  
REAL ESTATE INC

**\$349,999**  
MLS 6628878 Residential  
6211 Birchmont Drive  
Bemidji MN 56601



website: [www.AffinityRealEstate.com](http://www.AffinityRealEstate.com) | email: [info@affinityrealestate.com](mailto:info@affinityrealestate.com) | office: 218-237-3333 | fax: 218-237-3377

**Affinity**  
REAL ESTATE INC

**\$349,999**  
MLS 6628878 Residential  
6211 Birchmont Drive  
Bemidji MN 56601



website: [www.AffinityRealEstate.com](http://www.AffinityRealEstate.com) | email: [info@affinityrealestate.com](mailto:info@affinityrealestate.com) | office: 218-237-3333 | fax: 218-237-3377

**Affinity**  
REAL ESTATE INC

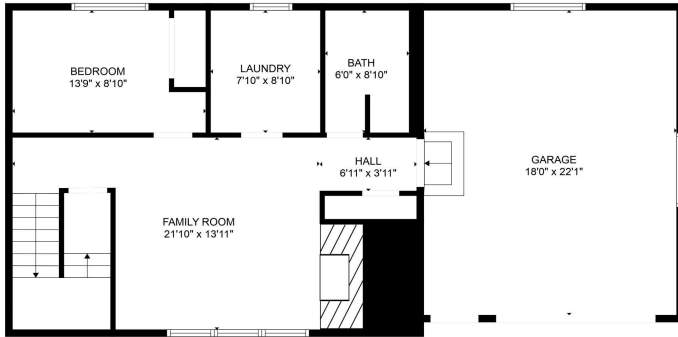
**\$349,999**  
MLS 6628878 Residential  
6211 Birchmont Drive  
Bemidji MN 56601



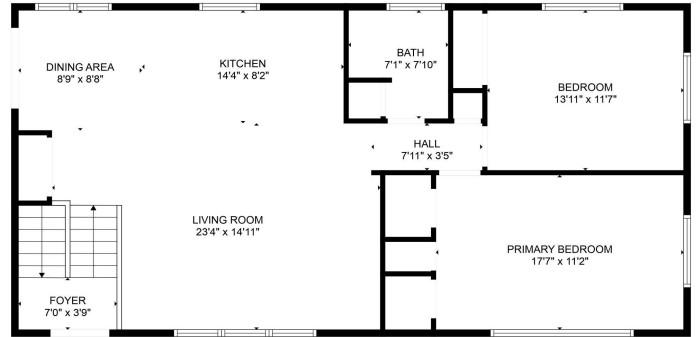
website: [www.AffinityRealEstate.com](http://www.AffinityRealEstate.com) | email: [info@affinityrealestate.com](mailto:info@affinityrealestate.com) | office: 218-237-3333 | fax: 218-237-3377

**Affinity**  
REAL ESTATE INC

**\$349,999**  
MLS 6628878 Residential  
6211 Birchmont Drive  
Bemidji MN 56601



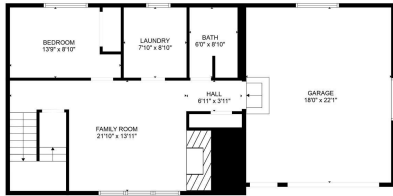
FLOOR PLAN CREATED BY CUBICASA APP; MEASUREMENTS DEEMED HIGHLY RELIABLE BUT NOT GUARANTEED.



FLOOR PLAN CREATED BY CUBICASA APP; MEASUREMENTS DEEMED HIGHLY RELIABLE BUT NOT GUARANTEED.



FLOOR 2



FLOOR 1

FLOOR PLAN CREATED BY CUBICASA APP; MEASUREMENTS DEEMED HIGHLY RELIABLE BUT NOT GUARANTEED.



website: [www.AffinityRealEstate.com](http://www.AffinityRealEstate.com) | email: [info@affinityrealestate.com](mailto:info@affinityrealestate.com) | office: 218-237-3333 | fax: 218-237-3377



**\$349,999**  
 MLS 6628878 Residential  
 6211 Birchmont Drive  
 Bemidji MN 56601





website: [www.AffinityRealEstate.com](http://www.AffinityRealEstate.com) | email: [info@affinityrealestate.com](mailto:info@affinityrealestate.com) | office: 218-237-3333 | fax: 218-237-3377

**Affinity**  
REAL ESTATE INC

**\$349,999**  
MLS 6628878 Residential  
6211 Birchmont Drive  
Bemidji MN 56601



website: [www.AffinityRealEstate.com](http://www.AffinityRealEstate.com) | email: [info@affinityrealestate.com](mailto:info@affinityrealestate.com) | office: 218-237-3333 | fax:218-237-3377

**Affinity**  
REAL ESTATE INC

**\$349,999**  
MLS 6628878 Residential  
6211 Birchmont Drive  
Bemidji MN 56601



website: [www.AffinityRealEstate.com](http://www.AffinityRealEstate.com) | email: [info@affinityrealestate.com](mailto:info@affinityrealestate.com) | office: 218-237-3333 | fax:218-237-3377



**\$349,999**  
MLS 6628878 Residential  
6211 Birchmont Drive  
Bemidji MN 56601



website: [www.AffinityRealEstate.com](http://www.AffinityRealEstate.com) | email: [info@affinityrealestate.com](mailto:info@affinityrealestate.com) | office: 218-237-3333 | fax: 218-237-3377



**\$349,999**  
MLS 6628878 Residential  
6211 Birchmont Drive  
Bemidji MN 56601



website: [www.AffinityRealEstate.com](http://www.AffinityRealEstate.com) | email: [info@affinityrealestate.com](mailto:info@affinityrealestate.com) | office: 218-237-3333 | fax:218-237-3377



**\$349,999**  
MLS 6628878 Residential  
6211 Birchmont Drive  
Bemidji MN 56601