



MLS 6628933 Land

\$89,999

8 Acres
Raw Land

TBD Musky Drive
Laporte MN 56461

Status: Active

Description:

The first thing I think of when walking this property is the close proximity to Kabekona lake and Kabekona river to the East, making this an ideal location to build a home or have a weekend getaway. This 8 acre parcel is wooded and also has some rolling terrain as it lies in an East to West plat. Bordering this property is federal land outside of your Eastern border including the Kabekona river. There is good duck/water fowl hunting along the river and the small island just calls for exploration and privacy on a sunny day.

To the West just a mile or less is Kabekona lake! A genuine jewel of our area and everything it has to entertain you, including very good water quality/clarity, walleye fishing, and family boating. All of this is just a minute or two from your wooded lot.

Additional Details:

Lot Acres	8
Lot Dimensions	TBD
School District	306
Taxes	\$984
Taxes with Assessments	\$1,194
Tax Year	2024

Additional Features:

Driving Directions:

From Laporte: MN 200 E/Central Ave S for 5 miles, turn right onto Hwy 38 and go 1/4 mile and take a right onto Hwy 39, go 0.9 miles to Musky Drive on the right. Proceed to sign



Listed By:
Coldwell Banker Crown Realtors

Affinity Real Estate Inc. participates in the Regional Multiple Listing Service of Minnesota, Inc Broker Reciprocity (sm) program, allowing us to display other broker's listings on our website. All properties are subject to prior sale, change or withdrawal.



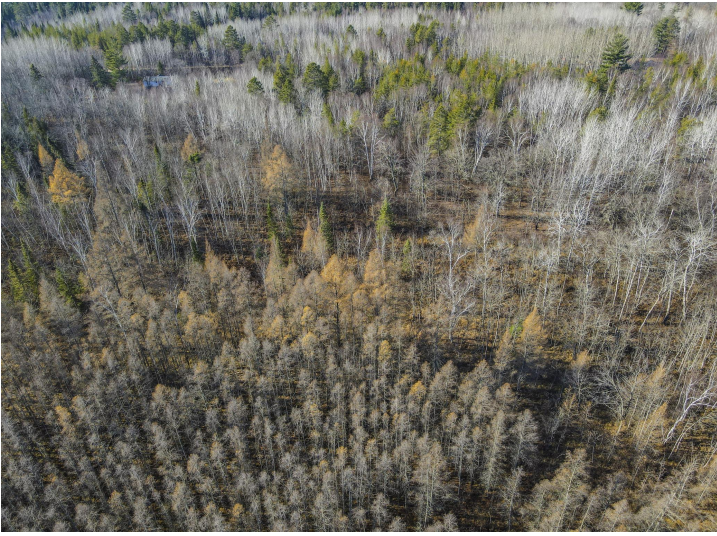
Call Affinity Real Estate

218-237-3333

info@affinityrealestate.com



Affinity Real Estate - 600 Park Avenue South - Park Rapids MN 56470



website: www.AffinityRealEstate.com | email: info@affinityrealestate.com | office: 218-237-3333 | fax:218-237-3377



\$89,999
MLS 6628933 Land
TBD Musky Drive
Laporte MN 56461



website: www.AffinityRealEstate.com | email: info@affinityrealestate.com | office: 218-237-3333 | fax:218-237-3377



\$89,999
MLS 6628933 Land
TBD Musky Drive
Laporte MN 56461