



MLS 6629448 Residential

\$269,500

1,684 sq ft
2 bedrooms
2 baths

2242 Spruce Drive
Brainerd MN 56401

Status: Active

Description:

Absolutely stunning renovation makes this townhome perfect for those who desire the best. Just look: 2 bedrooms, 2 baths, 2 living spaces, 2 car attached garage, 2 additional parking spaces, NEW luxury vinyl plank flooring, NEW soft carpet, NEW furnace & AC & water heater, NEW bath fixtures, NEW appliances throughout, NEW granite countertop, NEW woodwork & paint, NEW low maintenance deck, patio, and more. Oh...and the popcorn ceilings have been removed/replaced too! Make this beautiful home yours today – the projects are done and the association takes care of the lawn and snow – Easy, Peasey!

Additional Details:

Year Built	1979
Lot Acres	0.14
Lot Dimensions	120x60x96x55
Garage Stalls	2
School District	181
Taxes	\$2,040
Taxes with Assessments	\$2,040
Tax Year	2025

Additional Features:

Fuel: Natural Gas **Heat:** Forced Air

Driving Directions:

from the water tower in Brainerd, go south 1.9 miles on 371 Business S/S 6th St to R on Buffalo Hills Lane E to 2nd R on Spruce Dr to first left into townhomes to first left to prop on left (see sign)



Listed By:
Century 21 Brainerd Realty

Affinity Real Estate Inc. participates in the Regional Multiple Listing Service of Minnesota, Inc Broker Reciprocity (sm) program, allowing us to display other broker's listings on our website. All properties are subject to prior sale, change or withdrawal.



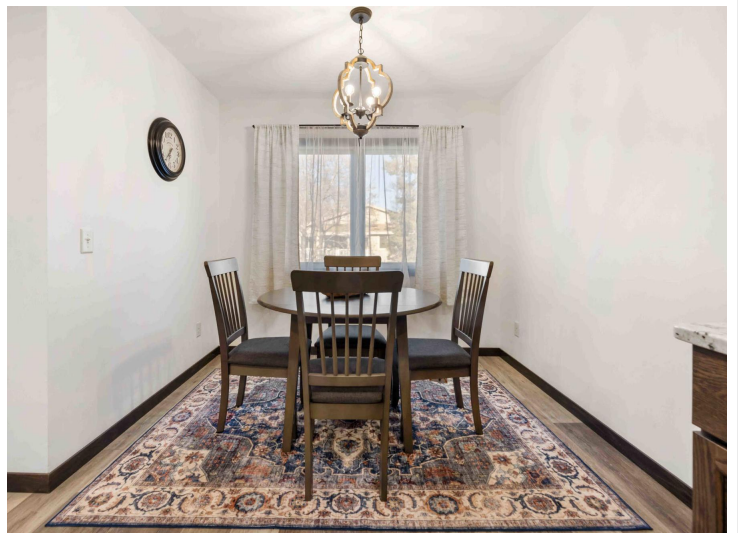
Call Affinity Real Estate

218-237-3333

info@affinityrealestate.com



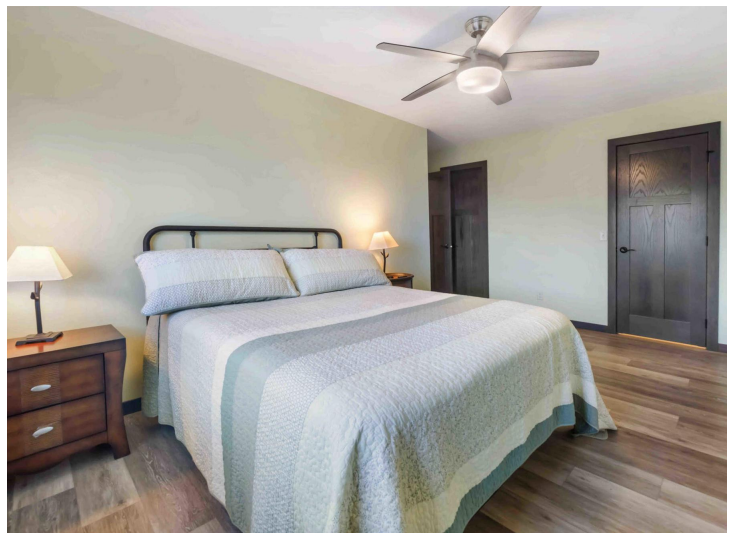
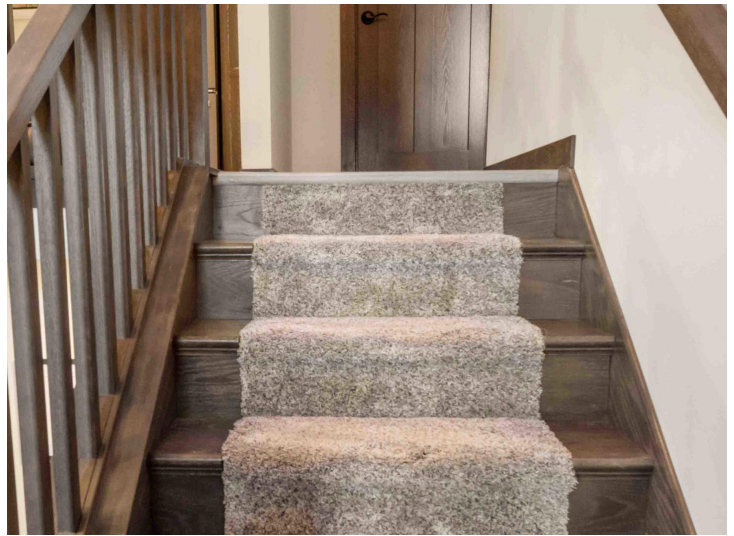
Affinity Real Estate - 600 Park Avenue South - Park Rapids MN 56470



website: www.AffinityRealEstate.com | email: info@affinityrealestate.com | office: 218-237-3333 | fax: 218-237-3377



\$269,500
 MLS 6629448 Residential
 2242 Spruce Drive
 Brainerd MN 56401



website: www.AffinityRealEstate.com | email: info@affinityrealestate.com | office: 218-237-3333 | fax: 218-237-3377

Affinity
REAL ESTATE INC

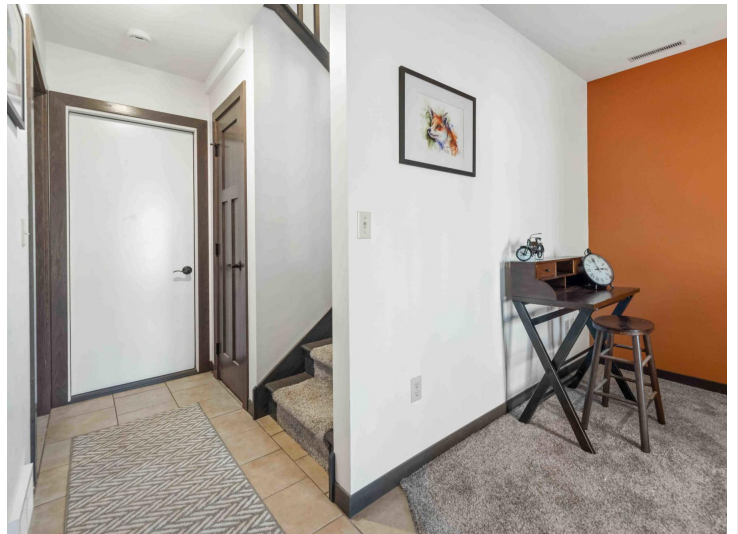
\$269,500
MLS 6629448 Residential
2242 Spruce Drive
Brainerd MN 56401



website: www.AffinityRealEstate.com | email: info@affinityrealestate.com | office: 218-237-3333 | fax: 218-237-3377



\$269,500
MLS 6629448 Residential
2242 Spruce Drive
Brainerd MN 56401



website: www.AffinityRealEstate.com | email: info@affinityrealestate.com | office: 218-237-3333 | fax: 218-237-3377

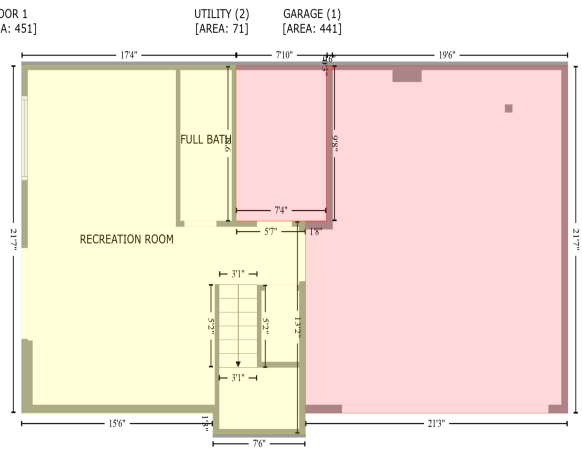
Affinity
REAL ESTATE INC

\$269,500
MLS 6629448 Residential
2242 Spruce Drive
Brainerd MN 56401

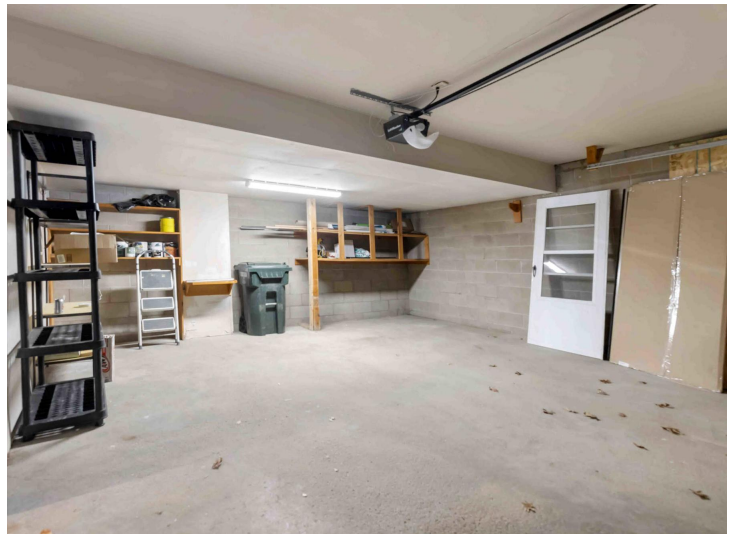
FLOOR 2
[AREA: 1021]



FLOOR 1
[AREA: 451]



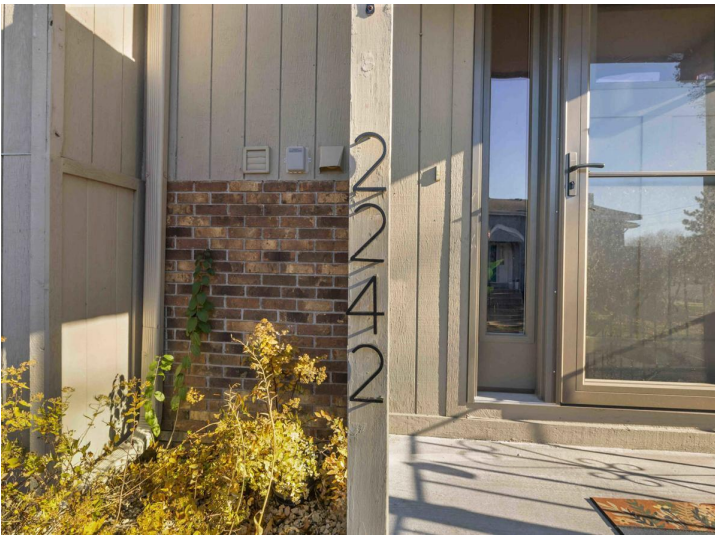
FLOOR PLAN CREATED BY CUBICASA APP. MEASUREMENTS DEEMED HIGHLY RELIABLE BUT NOT GUARANTEED.



website: www.AffinityRealEstate.com | email: info@affinityrealestate.com | office: 218-237-3333 | fax: 218-237-3377

Affinity
REAL ESTATE INC

\$269,500
MLS 6629448 Residential
2242 Spruce Drive
Brainerd MN 56401



website: www.AffinityRealEstate.com | email: info@affinityrealestate.com | office: 218-237-3333 | fax: 218-237-3377



\$269,500
MLS 6629448 Residential
2242 Spruce Drive
Brainerd MN 56401