



MLS 6630121 Residential

\$289,500

1,232 sq ft
3 bedrooms
2 baths

2359 Webb Forest Court
Hackensack MN 56452

Status: Active

Description:

Nestled in a quiet neighborhood on a peaceful cul-de-sac, this charming three bedroom home is perfect for families seeking space, privacy, and room to play. Set on a generous 3.65-acre lot with a large yard, this property offers plenty of room for outdoor activities and a sense of open freedom. Inside, a spacious kitchen with ample cupboard space and room for a dining table invites family meals and gatherings. Sliding doors flood the home with natural light, bringing the beauty of the outdoors in. The primary suite includes an en suite, great for privacy and personal space. An attached two-car garage and a detached pole barn/garage provide ample storage for vehicles and equipment. With easy-care tile flooring in the kitchen and included washer and dryer, this home combines functionality with comfort. A true retreat, it offers a tranquil setting while keeping daily conveniences close at hand.

Additional Details:

Year Built	2005
Lot Acres	3.65
Lot Dimensions	143x730x423x535
Garage Stalls	4
School District	113
Taxes	\$1,086
Taxes with Assessments	\$1,152
Tax Year	2025

Additional Features:

Fuel: Propane **Heat:** Forced Air

Driving Directions:

From Longville - Head out of town on Co Rd 5 NW for 13 miles. Turn left onto 24th Ave NW/Woodrow Twp Rd 1. Turn left onto Webb Forest Ct NW to the subject property.



Listed By:
Heartland Real Estate

Affinity Real Estate Inc. participates in the Regional Multiple Listing Service of Minnesota, Inc Broker Reciprocity (sm) program, allowing us to display other broker's listings on our website. All properties are subject to prior sale, change or withdrawal.



Call Affinity Real Estate

218-237-3333

info@affinityrealestate.com



Affinity Real Estate - 600 Park Avenue South - Park Rapids MN 56470



website: www.AffinityRealEstate.com | email: info@affinityrealestate.com | office: 218-237-3333 | fax: 218-237-3377



\$289,500
 MLS 6630121 Residential
 2359 Webb Forest Court
 Hackensack MN 56452



website: www.AffinityRealEstate.com | email: info@affinityrealestate.com | office: 218-237-3333 | fax: 218-237-3377



\$289,500
MLS 6630121 Residential
2359 Webb Forest Court
Hackensack MN 56452



website: www.AffinityRealEstate.com | email: info@affinityrealestate.com | office: 218-237-3333 | fax: 218-237-3377



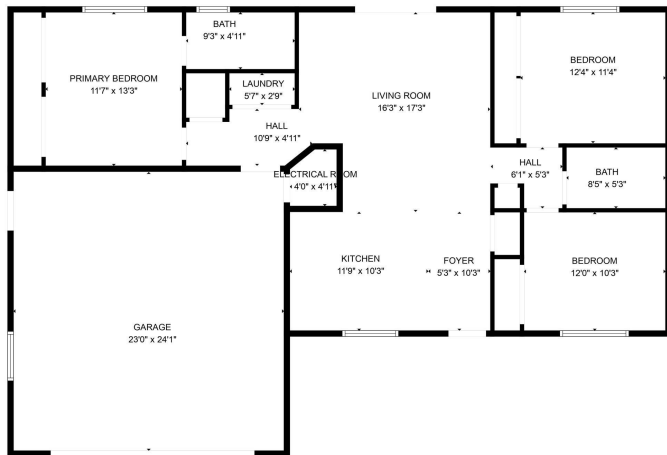
\$289,500
MLS 6630121 Residential
2359 Webb Forest Court
Hackensack MN 56452



website: www.AffinityRealEstate.com | email: info@affinityrealestate.com | office: 218-237-3333 | fax: 218-237-3377



\$289,500
 MLS 6630121 Residential
 2359 Webb Forest Court
 Hackensack MN 56452



FLOOR PLAN CREATED BY CUBICASA APP. MEASUREMENTS DEEMED HIGHLY RELIABLE BUT NOT GUARANTEED.

website: www.AffinityRealEstate.com | email: info@affinityrealestate.com | office: 218-237-3333 | fax: 218-237-3377



\$289,500
 MLS 6630121 Residential
 2359 Webb Forest Court
 Hackensack MN 56452

website: www.AffinityRealEstate.com | email: info@affinityrealestate.com | office: 218-237-3333 | fax:218-237-3377



\$289,500

MLS 6630121 Residential
2359 Webb Forest Court
Hackensack MN 56452