



MLS 6630327 Residential

**\$264,900**

1,586 sq ft  
3 bedrooms  
2 baths

3450 Hideaway Lane  
Bemidji MN 56601

Status: Active

**Description:**

This home features 3BR/2BA with thoughtful amenities such as abundant kitchen cabinets and newer appliances, making it ideal for comfortable living. Including the washer, dryer, and chest freezer adds convenience for potential buyers. The custom gas fireplace is a cozy touch, and the large walk-in shower in the primary bath is a convenient feature. Roomy primary suite includes generous storage. Large windows allow for a light-filled one level home built in 2006. Well maintained throughout. The oversized double detached metal garage is a great asset, providing ample space for vehicles, boats, ATVs, and more, which is perfect for outdoor enthusiasts. Having a private five-acre lot near the Cass Lake chain enhances the property's appeal, especially with easy boat access down the road. The combination of surrounding woods and open yard space allows for privacy and opportunities for gardening or recreational activities.

**Additional Details:**

Year Built	2006
Lot Acres	5.29
Lot Dimensions	320x715
Garage Stalls	2
School District	31
Taxes	\$1,446
Taxes with Assessments	\$1,446
Tax Year	2024

**Additional Features:**

**Basement:** Crawl Space **Fuel:** Propane **Garage:** 2 **Heat:** Forced Air **Sewer:** Private Sewer **Water:** Submersible - 4 Inch, Drilled, Private **Air Conditioning:** Central Air

**Driving Directions:**

South on Paul Bunyan Dr, left on Roosevelt Rd 10 miles, right on Hideaway Ln.



Listed By:  
Century 21 Dickinson

Affinity Real Estate Inc. participates in the Regional Multiple Listing Service of Minnesota, Inc Broker Reciprocity (sm) program, allowing us to display other broker's listings on our website. All properties are subject to prior sale, change or withdrawal.



**Call Affinity Real Estate**

**218-237-3333**

**info@affinityrealestate.com**



**Affinity Real Estate - 600 Park Avenue South - Park Rapids MN 56470**



website: [www.AffinityRealEstate.com](http://www.AffinityRealEstate.com) | email: [info@affinityrealestate.com](mailto:info@affinityrealestate.com) | office: 218-237-3333 | fax:218-237-3377

**Affinity**  
REAL ESTATE INC

**\$264,900**  
MLS 6630327 Residential  
3450 Hideaway Lane  
Bemidji MN 56601



website: [www.AffinityRealEstate.com](http://www.AffinityRealEstate.com) | email: [info@affinityrealestate.com](mailto:info@affinityrealestate.com) | office: 218-237-3333 | fax:218-237-3377

**Affinity**  
REAL ESTATE INC

**\$264,900**  
MLS 6630327 Residential  
3450 Hideaway Lane  
Bemidji MN 56601



website: [www.AffinityRealEstate.com](http://www.AffinityRealEstate.com) | email: [info@affinityrealestate.com](mailto:info@affinityrealestate.com) | office: 218-237-3333 | fax:218-237-3377

**Affinity**  
REAL ESTATE INC

**\$264,900**  
MLS 6630327 Residential  
3450 Hideaway Lane  
Bemidji MN 56601



website: [www.AffinityRealEstate.com](http://www.AffinityRealEstate.com) | email: [info@affinityrealestate.com](mailto:info@affinityrealestate.com) | office: 218-237-3333 | fax: 218-237-3377

**Affinity**  
REAL ESTATE INC

**\$264,900**  
MLS 6630327 Residential  
3450 Hideaway Lane  
Bemidji MN 56601



website: [www.AffinityRealEstate.com](http://www.AffinityRealEstate.com) | email: [info@affinityrealestate.com](mailto:info@affinityrealestate.com) | office: 218-237-3333 | fax: 218-237-3377

**Affinity**  
REAL ESTATE INC

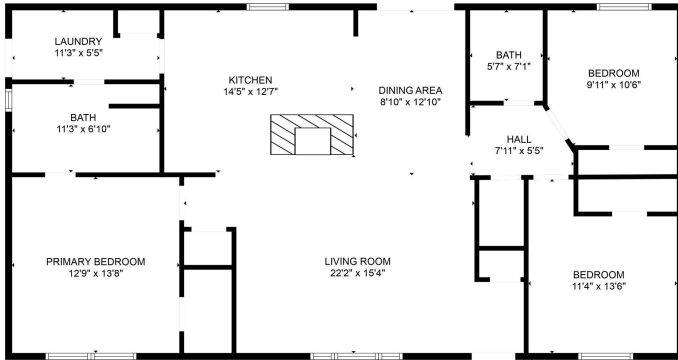
**\$264,900**  
MLS 6630327 Residential  
3450 Hideaway Lane  
Bemidji MN 56601



website: [www.AffinityRealEstate.com](http://www.AffinityRealEstate.com) | email: [info@affinityrealestate.com](mailto:info@affinityrealestate.com) | office: 218-237-3333 | fax:218-237-3377



**\$264,900**  
MLS 6630327 Residential  
3450 Hideaway Lane  
Bemidji MN 56601



FLOOR PLAN CREATED BY CUBSCASA APP. MEASUREMENTS DEEMED HIGHLY RELIABLE BUT NOT GUARANTEED.

website: [www.AffinityRealEstate.com](http://www.AffinityRealEstate.com) | email: [info@affinityrealestate.com](mailto:info@affinityrealestate.com) | office: 218-237-3333 | fax:218-237-3377



**\$264,900**  
 MLS 6630327 Residential  
 3450 Hideaway Lane  
 Bemidji MN 56601