

MLS 6631380 Lake Land

**\$158,000**

**Description:**

835(+/-) front feet on McCraney Lake and 1,250(+/-) front feet on the White Earth River. 11 acres of RAW land. Heavily wooded property with untouched lake front. Property stretches across the road as well.

**Additional Details:**

|                        |       |
|------------------------|-------|
| Lot Acres              | 11    |
| Lot Dimensions         | irr   |
| School District        | 435   |
| Taxes                  | \$356 |
| Taxes with Assessments | \$356 |
| Tax Year               | 2024  |

**Additional Features:**

**Driving Directions:**

Co Hwy 113 to Co Rd 144. Located just after property at 3264 Co Rd 144.



Listed By:  
Re/Max Lakes Region

Affinity Real Estate Inc. participates in the Regional Multiple Listing Service of Minnesota, Inc Broker Reciprocity (sm) program, allowing us to display other broker's listings on our website. All properties are subject to prior sale, change or withdrawal.



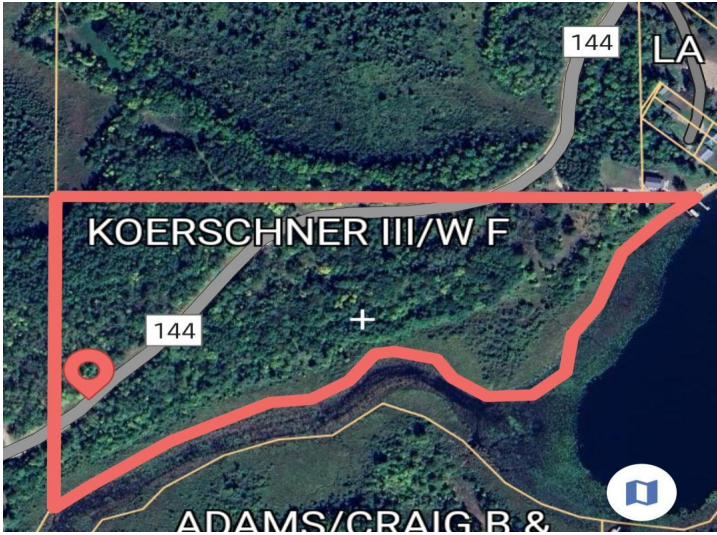
Call Affinity Real Estate

**218-237-3333**

[info@affinityrealestate.com](mailto:info@affinityrealestate.com)



Affinity Real Estate - 600 Park Avenue South - Park Rapids MN 56470



website: [www.AffinityRealEstate.com](http://www.AffinityRealEstate.com) | email: [info@affinityrealestate.com](mailto:info@affinityrealestate.com) | office: 218-237-3333 | fax:218-237-3377



**\$158,000**  
MLS 6631380 Lake Land  
TBD County Road 144  
Waubun MN 56589