



MLS 6631432 Lake Land

\$175,000

Description:

Located only a few miles outside the city of Bemidji, Minnesota sits this 63.86 acres nestled along the Mississippi river. Adjacent to thousands of acres of state/county/public land that is hard to access for most. Very diverse habitats of field, woods, scrub brush, low land, wetlands and the Mississippi river. Approximately 1.4 miles of river frontage! Expect to find deer, turkey, grouse, bear and waterfowl as your main game species to target/harvest if of interest. With the Mississippi river at your fingertips, bring your kayak/canoe/small boat and fishing pole! Create a base camp or explore with Beltrami County/City of Bemidji for making this a potential build site. The public access for the Mississippi river is conveniently located only 1/4 mile away or consider creating your own access from the property itself. Property consists of 2-Property ID's which could be split. #150049300 & 150050600.

Additional Details:

Lot Acres	63.86
Lot Dimensions	TBD
School District	31
Taxes	\$386
Taxes with Assessments	\$386
Tax Year	2023

Additional Features:

Driving Directions:

From the intersection of Hwy 2 and Division street West (Near Public Schools) take Division street W one mile to the west, take left on Becida road/CR 7 and travel 5 miles. Property on your right.



Listed By:
Base Camp Country Real Estate

Affinity Real Estate Inc. participates in the Regional Multiple Listing Service of Minnesota, Inc Broker Reciprocity (sm) program, allowing us to display other broker's listings on our website. All properties are subject to prior sale, change or withdrawal.



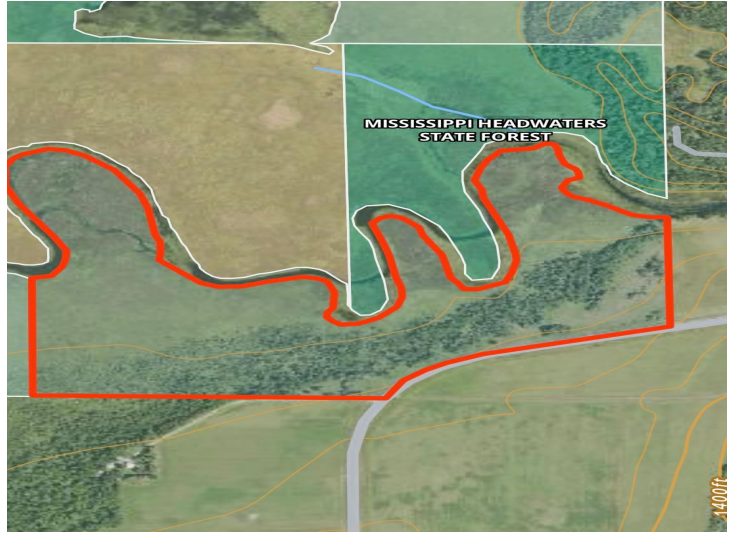
Call Affinity Real Estate

218-237-3333

info@affinityrealestate.com



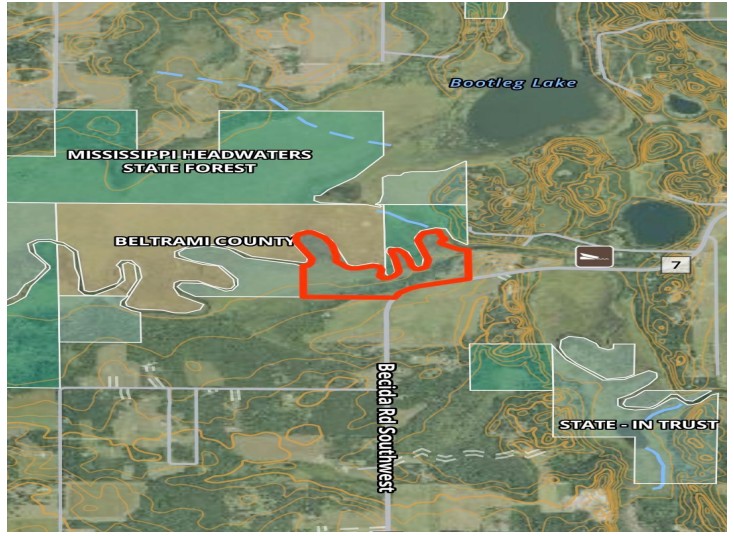
Affinity Real Estate - 600 Park Avenue South - Park Rapids MN 56470



website: www.AffinityRealEstate.com | email: info@affinityrealestate.com | office: 218-237-3333 | fax:218-237-3377



\$175,000
MLS 6631432 Lake Land
TBD Becida Road SW
Bemidji MN 56601



website: www.AffinityRealEstate.com | email: info@affinityrealestate.com | office: 218-237-3333 | fax:218-237-3377



\$175,000
MLS 6631432 Lake Land
TBD Becida Road SW
Bemidji MN 56601



website: www.AffinityRealEstate.com | email: info@affinityrealestate.com | office: 218-237-3333 | fax:218-237-3377



\$175,000
MLS 6631432 Lake Land
TBD Becida Road SW
Bemidji MN 56601



website: www.AffinityRealEstate.com | email: info@affinityrealestate.com | office: 218-237-3333 | fax:218-237-3377



\$175,000
MLS 6631432 Lake Land
TBD Becida Road SW
Bemidji MN 56601



website: www.AffinityRealEstate.com | email: info@affinityrealestate.com | office: 218-237-3333 | fax:218-237-3377



\$175,000
MLS 6631432 Lake Land
TBD Becida Road SW
Bemidji MN 56601



website: www.AffinityRealEstate.com | email: info@affinityrealestate.com | office: 218-237-3333 | fax:218-237-3377



\$175,000
MLS 6631432 Lake Land
TBD Becida Road SW
Bemidji MN 56601