



MLS 6631573 Lake Home

\$730,703

3,902 sq ft
4 bedrooms
3 baths

7436 Christy Drive
Nisswa MN 56468

Waterfront: Upper Gull

Status: Pending

Description:

Model not for sale but can be built on another lot! Lot price not included in sale price. This home has all of the bells and whistles! Complete with a 4 car insulated garage, granite countertops throughout, walk-in master closet, stainless steel appliances, gas fireplace with stone surround, and a large family room, perfect for entertaining family and friends!!! This 4 bedroom 3 bathroom home with a grand staircase is beautiful and definitely a must see. Other lots, developments, and floor plans available!

Additional Details:

Year Built	2024
Lot Acres	0.93
Lot Dimensions	178x328x100x353
Garage Stalls	4
School District	186
Taxes	\$3,366
Taxes with Assessments	\$3,432
Tax Year	2024

Additional Features:

Basement: Finished, Full, Walkout **Fuel:** Natural Gas **Garage:** 4 **Heat:** Forced Air, Fireplace(s) **Sewer:** Private Sewer, Tank with Drainage Field
Water: Private, Well **Air Conditioning:** Central Air

Driving Directions:

Take Hwy 371 North to County Road 29, take a left, in 2.4 miles turn left onto Christy Drive, property is on the left.



Listed By:
Counselor Realty Brainerd Lakes

Affinity Real Estate Inc. participates in the Regional Multiple Listing Service of Minnesota, Inc Broker Reciprocity (sm) program, allowing us to display other broker's listings on our website. All properties are subject to prior sale, change or withdrawal.



Call Affinity Real Estate

218-237-3333

info@affinityrealestate.com



Affinity Real Estate - 600 Park Avenue South - Park Rapids MN 56470



website: www.AffinityRealEstate.com | email: info@affinityrealestate.com | office: 218-237-3333 | fax: 218-237-3377

Affinity
REAL ESTATE INC

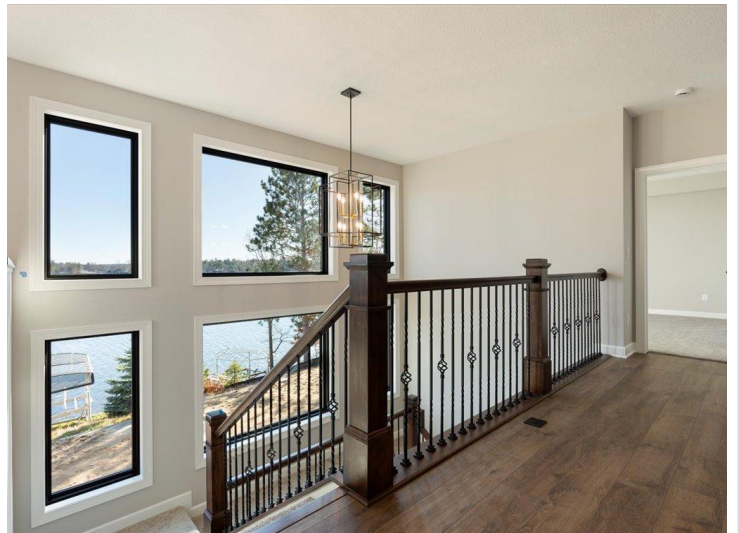
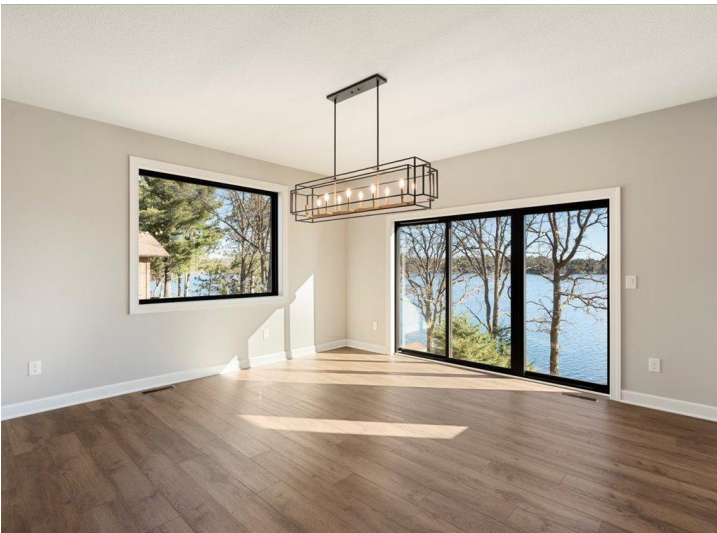
\$730,703
MLS 6631573 Lake Home
7436 Christy Drive
Nisswa MN 56468



website: www.AffinityRealEstate.com | email: info@affinityrealestate.com | office: 218-237-3333 | fax: 218-237-3377

Affinity
REAL ESTATE INC

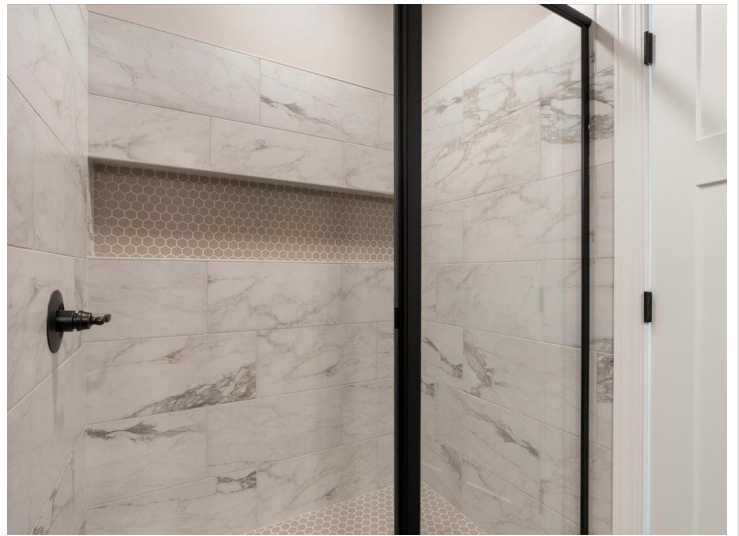
\$730,703
MLS 6631573 Lake Home
7436 Christy Drive
Nisswa MN 56468



website: www.AffinityRealEstate.com | email: info@affinityrealestate.com | office: 218-237-3333 | fax:218-237-3377

Affinity
REAL ESTATE INC

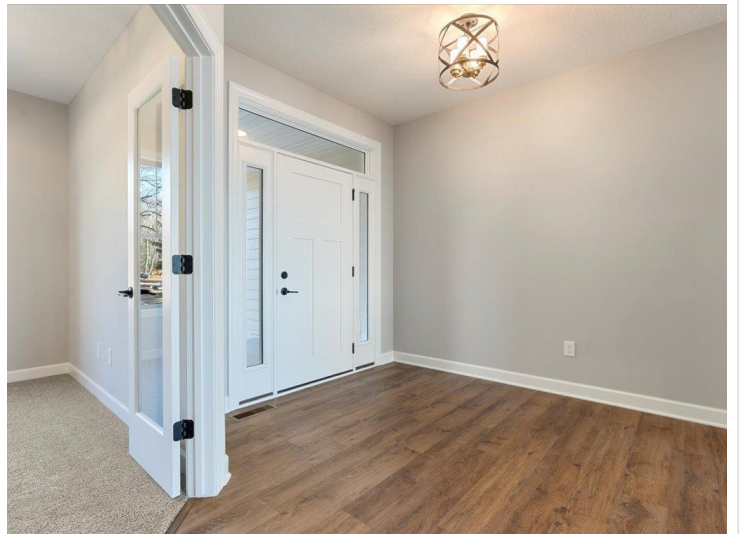
\$730,703
MLS 6631573 Lake Home
7436 Christy Drive
Nisswa MN 56468



website: www.AffinityRealEstate.com | email: info@affinityrealestate.com | office: 218-237-3333 | fax: 218-237-3377



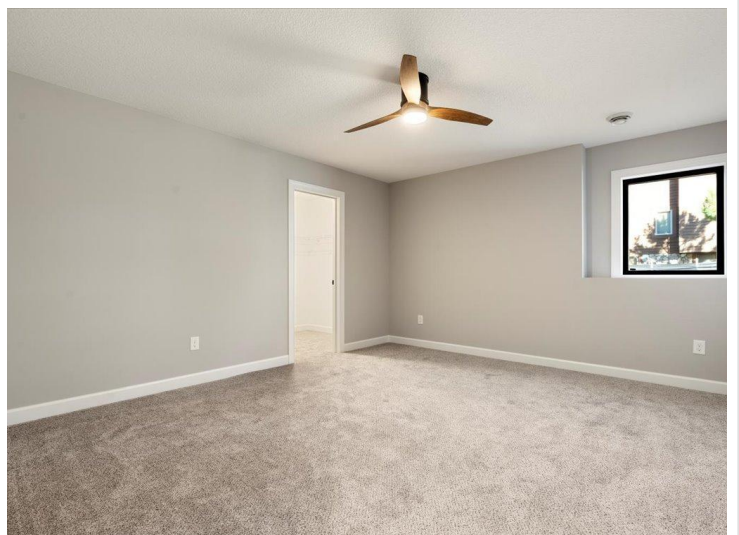
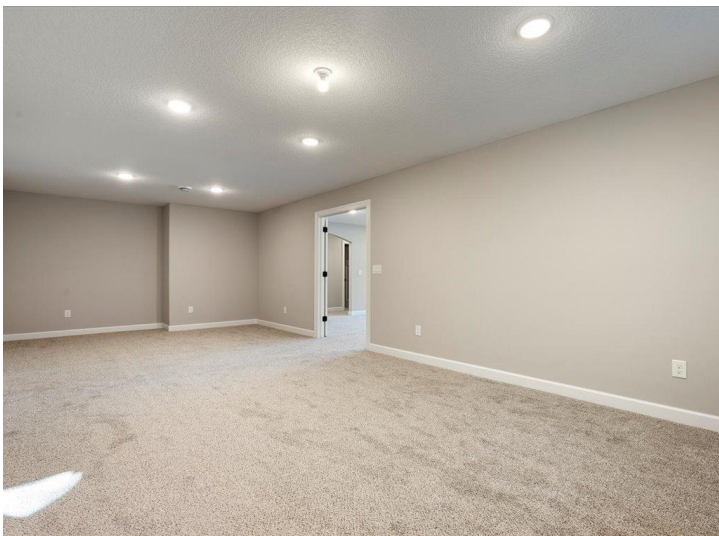
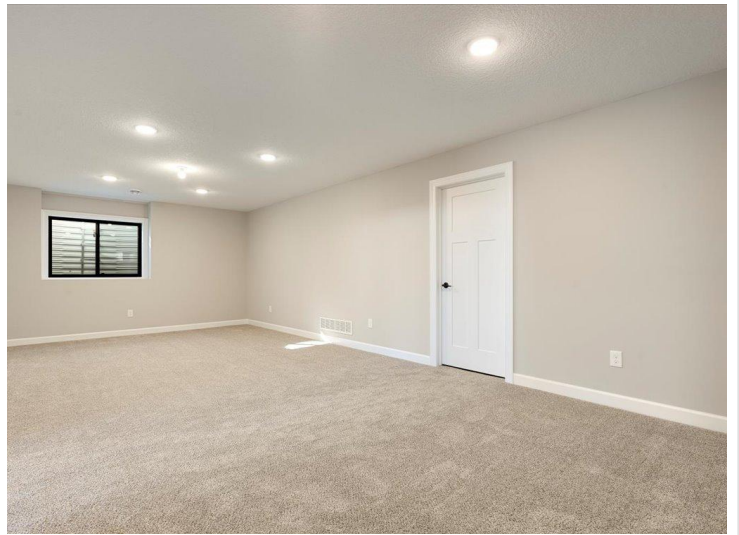
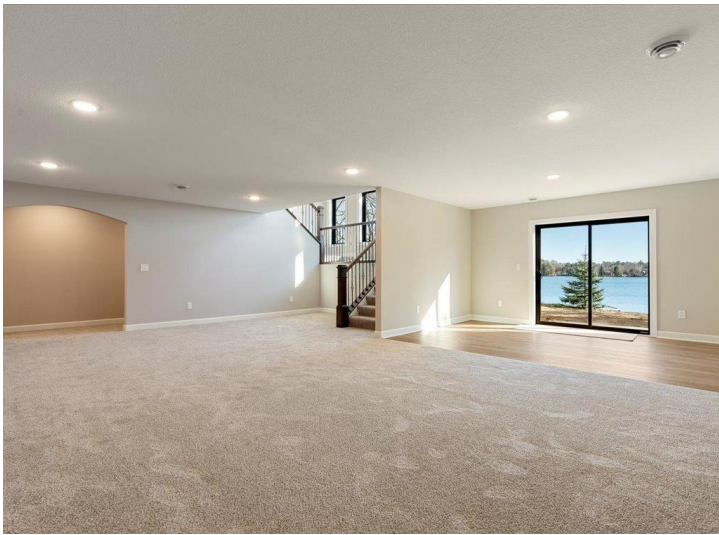
\$730,703
MLS 6631573 Lake Home
7436 Christy Drive
Nisswa MN 56468



website: www.AffinityRealEstate.com | email: info@affinityrealestate.com | office: 218-237-3333 | fax:218-237-3377

Affinity
REAL ESTATE INC

\$730,703
MLS 6631573 Lake Home
7436 Christy Drive
Nisswa MN 56468



website: www.AffinityRealEstate.com | email: info@affinityrealestate.com | office: 218-237-3333 | fax:218-237-3377



\$730,703
MLS 6631573 Lake Home
7436 Christy Drive
Nisswa MN 56468



website: www.AffinityRealEstate.com | email: info@affinityrealestate.com | office: 218-237-3333 | fax:218-237-3377



\$730,703
MLS 6631573 Lake Home
7436 Christy Drive
Nisswa MN 56468