



MLS 6631778 Lake Home

**\$390,000**

2,592 sq ft  
2 bedrooms  
1 baths

38872 Height Of Land Frontage  
Road  
Detroit Lakes MN 56501

Waterfront: Height of Land

Status: Active

**Description:**

Hello Lake Life!! Welcome to this lovely year round lake home on 65ft of level sandy beach on Height of Land Lake. This home offers 2 bedrooms + an office and an attached 1 stall garage. The full bathroom with laundry and the open floor plan make living easy. Large windows frame the breathtaking lake views, filling the space with natural light. Step outside onto the deck, perfect for entertaining or simply enjoying the stunning level lake lot! And don't miss the adorable bunkhouse right at the water's edge—a perfect lakeside retreat!

**Additional Details:**

Year Built	1955
Lot Acres	0.21
Lot Dimensions	65ft
Garage Stalls	1
School District	23
Taxes	\$1,656
Taxes with Assessments	\$1,716
Tax Year	2024

**Additional Features:**

**Fuel:** Electric, Propane **Heat:** Baseboard, Other

**Driving Directions:**

From Detroit Lakes, head north on Washington Ave toward Holmes St W. Turn East onto N St E/Lake Country Scenic Bywy, Continue to follow MN-34 E/Lake Country Scenic Bywy. Turn Northwest onto HOL Frontage Rd. Turn Southwest to stay on HOL Frontage Rd. Turn Northwest & destination will be on the right



Listed By:  
Keller Williams Realty Profess

Affinity Real Estate Inc. participates in the Regional Multiple Listing Service of Minnesota, Inc Broker Reciprocity (sm) program, allowing us to display other broker's listings on our website. All properties are subject to prior sale, change or withdrawal.



**Call Affinity Real Estate**

**218-237-3333**

**info@affinityrealestate.com**



**Affinity Real Estate - 600 Park Avenue South - Park Rapids MN 56470**



website: [www.AffinityRealEstate.com](http://www.AffinityRealEstate.com) | email: [info@affinityrealestate.com](mailto:info@affinityrealestate.com) | office: 218-237-3333 | fax: 218-237-3377

**Affinity**  
REAL ESTATE INC

**\$390,000**  
MLS 6631778 Lake Home  
38872 Height Of Land  
Frontage Road  
Detroit Lakes MN 56501



website: [www.AffinityRealEstate.com](http://www.AffinityRealEstate.com) | email: [info@affinityrealestate.com](mailto:info@affinityrealestate.com) | office: 218-237-3333 | fax: 218-237-3377



**\$390,000**  
MLS 6631778 Lake Home  
38872 Height Of Land  
Frontage Road  
Detroit Lakes MN 56501



website: [www.AffinityRealEstate.com](http://www.AffinityRealEstate.com) | email: [info@affinityrealestate.com](mailto:info@affinityrealestate.com) | office: 218-237-3333 | fax:218-237-3377

**Affinity**  
REAL ESTATE INC

**\$390,000**  
MLS 6631778 Lake Home  
38872 Height Of Land  
Frontage Road  
Detroit Lakes MN 56501



website: [www.AffinityRealEstate.com](http://www.AffinityRealEstate.com) | email: [info@affinityrealestate.com](mailto:info@affinityrealestate.com) | office: 218-237-3333 | fax:218-237-3377



**\$390,000**  
MLS 6631778 Lake Home  
38872 Height Of Land  
Frontage Road  
Detroit Lakes MN 56501



website: [www.AffinityRealEstate.com](http://www.AffinityRealEstate.com) | email: [info@affinityrealestate.com](mailto:info@affinityrealestate.com) | office: 218-237-3333 | fax:218-237-3377



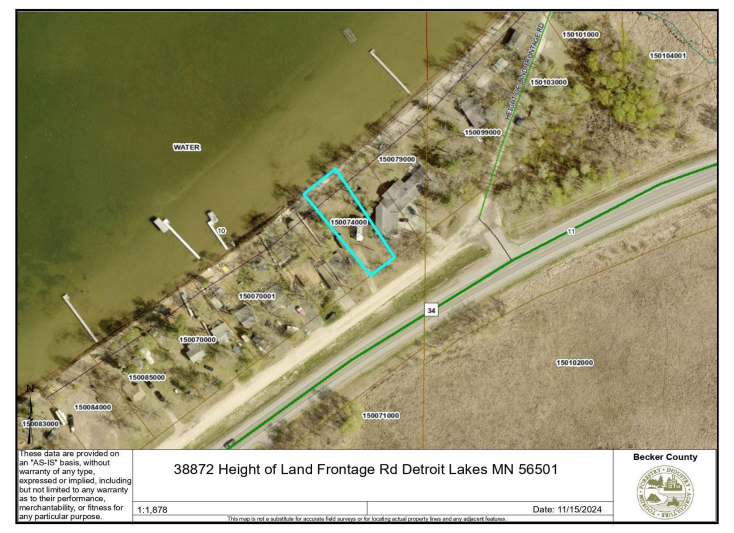
**\$390,000**  
MLS 6631778 Lake Home  
38872 Height Of Land  
Frontage Road  
Detroit Lakes MN 56501



website: [www.AffinityRealEstate.com](http://www.AffinityRealEstate.com) | email: [info@affinityrealestate.com](mailto:info@affinityrealestate.com) | office: 218-237-3333 | fax:218-237-3377



**\$390,000**  
MLS 6631778 Lake Home  
38872 Height Of Land  
Frontage Road  
Detroit Lakes MN 56501



website: [www.AffinityRealEstate.com](http://www.AffinityRealEstate.com) | email: [info@affinityrealestate.com](mailto:info@affinityrealestate.com) | office: 218-237-3333 | fax:218-237-3377



**\$390,000**  
 MLS 6631778 Lake Home  
 38872 Height Of Land  
 Frontage Road  
 Detroit Lakes MN 56501