



MLS 6632142 Land

\$40,000

5 Acres
Raw Land

XXXX Co Hwy 31
Frazee MN 56544

Status: Pending

Description:

5 acres of land located along Co Hwy 31 only 3.5 miles NE of Frazee! Mixed woods including oak, birch, poplar, pine trees, and brush. This is an excellent building or camping location and investment opportunity. Property will need to be surveyed and is being split off a larger parcel.

Additional Details:

Lot Acres	5
Lot Dimensions	240x907
School District	23
Taxes	\$1,452
Taxes with Assessments	\$1,452
Tax Year	2024

Additional Features:

Driving Directions:

From Frazee go east on State Hwy 87 for 2.8 miles, turn left and head north on Co Hwy 31 for approximately 1 mile to the property on the right side.



Listed By:
Counselor Realty Detroit Lakes

Affinity Real Estate Inc. participates in the Regional Multiple Listing Service of Minnesota, Inc Broker Reciprocity (sm) program, allowing us to display other broker's listings on our website. All properties are subject to prior sale, change or withdrawal.



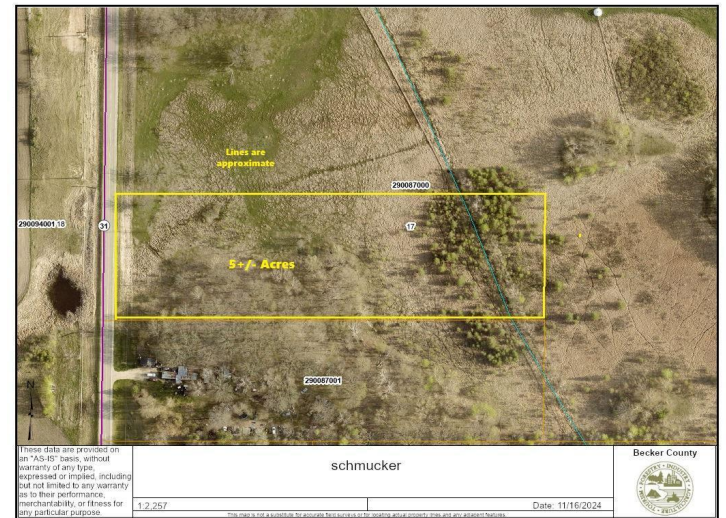
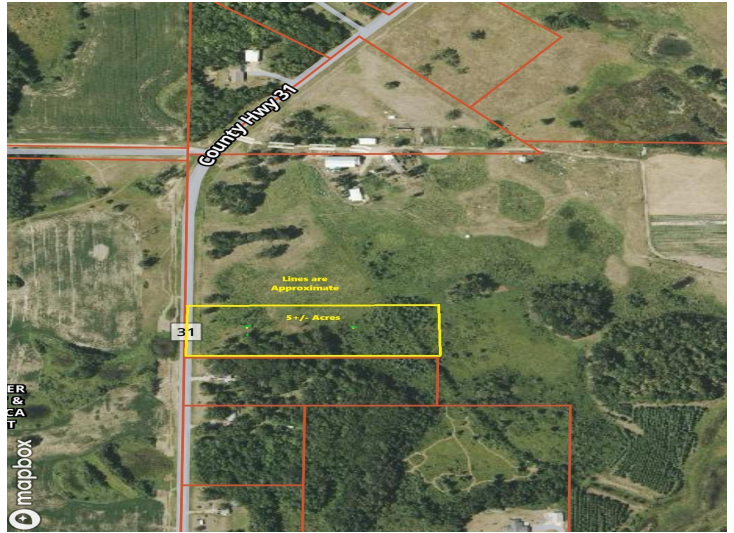
Call Affinity Real Estate

218-237-3333

info@affinityrealestate.com



Affinity Real Estate - 600 Park Avenue South - Park Rapids MN 56470



website: www.AffinityRealEstate.com | email: info@affinityrealestate.com | office: 218-237-3333 | fax:218-237-3377



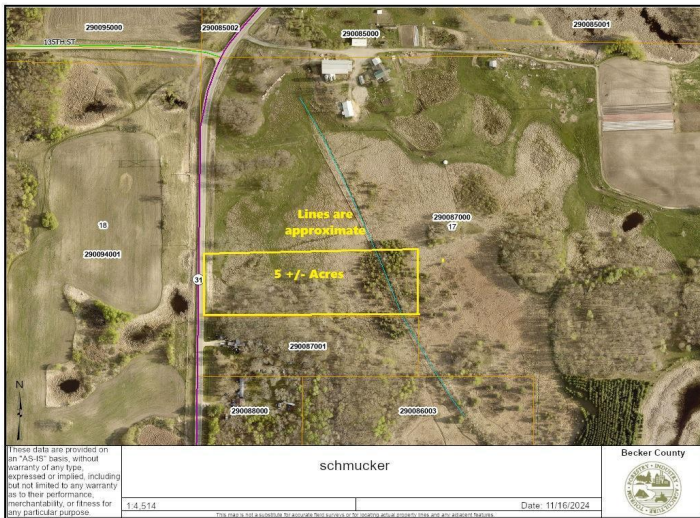
\$40,000
MLS 6632142 Land
XXXX Co Hwy 31
Frazee MN 56544



website: www.AffinityRealEstate.com | email: info@affinityrealestate.com | office: 218-237-3333 | fax:218-237-3377



\$40,000
MLS 6632142 Land
XXXX Co Hwy 31
Frazee MN 56544



These data are provided on an "AS-IS" basis, without warranty of any type, expressed or implied, including but not limited to any warranty as to their performance, merchantability, or fitness for any particular purpose.

website: www.AffinityRealEstate.com | email: info@affinityrealestate.com | office: 218-237-3333 | fax:218-237-3377



\$40,000
 MLS 6632142 Land
 XXXX Co Hwy 31
 Frazee MN 56544