

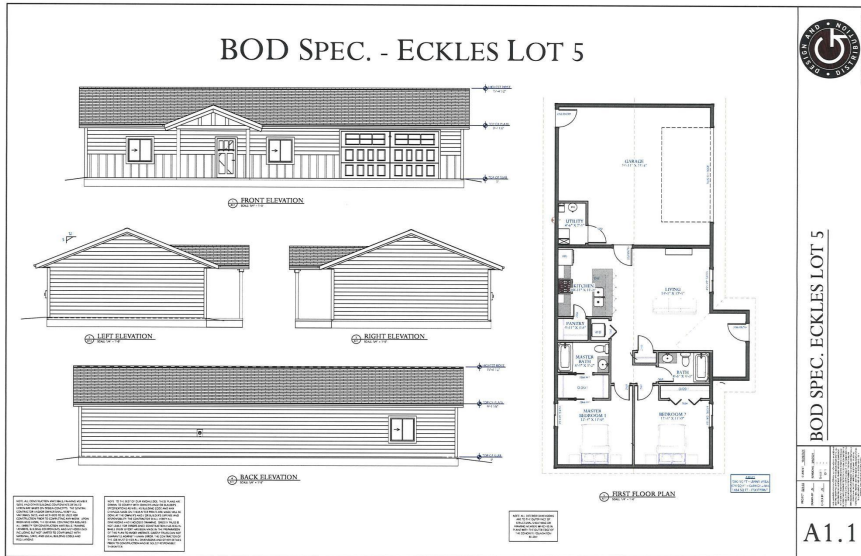
MLS 6632586 Residential

\$264,900

1,060 sq ft
2 bedrooms
2 baths

6335 Wrenner Lane
Bemidji MN 56601

Status: Pending



Description:

Discover a newly built home that combines modern finesse with a robust design, all set on a commanding 2-acre lot featuring a mix of open space and trees. This single-level residence offers 2 spacious bedrooms and 2 full baths, complete with premium touches like in-floor heating, solid core doors, LP SmartSide siding, and sturdy Marvin Windows.

Step inside and experience the expansive open-concept layout, where the living area flows seamlessly into the kitchen, anchored by a substantial center island that seats up to four. A generous walk-in pantry enhances functionality, providing the practicality everyone appreciates.

Nestled in a serene new development just a few miles from Bemidji, this home is an ideal sanctuary away from the daily grind. Personalize your space and choose from a robust selection of color options for cabinets, paint, flooring, doors, and siding to ensure your home reflects your unique style and personality.

The fully finished attached garage offers ample space for tools, equipment, or vehicles, designed for durability and efficiency. Plus, don't overlook our Down Payment Assistance options to help make your dream home a reality. Step up and claim your slice of tranquility today!

Additional Details:

Year Built	2025
Lot Acres	2.02
Lot Dimensions	306.01x287.10
Garage Stalls	2
School District	31
Taxes	(unreported)
Taxes with Assessments	(unreported)
Tax Year	2024

Additional Features:

Basement: None **Fuel:** Propane **Garage:** 2 **Heat:** Ductless Mini-Split **Sewer:** Septic System Compliant - Yes **Water:** Submersible - 4 Inch **Air**

Central Air Conditioning
Listed By:
Lake-N-Woods Realty

Affinity Real Estate, Northparkes Road, Park Rapids, MN 56655. Property located at the corner of Mayflower and Eckles Rd.
Service of Minnesota, Inc Broker Reciprocity (sm) program, allowing us to display other broker's listings on our website. All properties are subject to prior sale, change or withdrawal.



Call Affinity Real Estate

218-237-3333

info@affinityrealestate.com



Affinity Real Estate - 600 Park Avenue South - Park Rapids MN 56470

BOD SPEC. - ECKLES LOT 5

BOD SPEC. ECKLES LOT 5

A1.1

Lot 5 Kirstens Corner

These data are provided on an "AS-IS" basis, without warranty of any kind, expressed or implied, including but not limited to any warranty as to their performance, merchantability, or fitness for any particular purpose.	Date: 11/18/2024 1:1,690 This map is not a substitute for accurate field surveys or for locating actual property lines and any adjacent features.
---	---

Beltrami
 County
 Minnesota

website: www.AffinityRealEstate.com | email: info@affinityrealestate.com | office: 218-237-3333 | fax: 218-237-3377



\$264,900

MLS 6632586 Residential
 6335 Wrenner Lane
 Bemidji MN 56601