



MLS 6632936 Land

\$589,900

400 Acres
Other

22323 County Road 14
Sebeka MN 56477

Status: Pending

Description:

400 acres of old farmstead that has a mixture of high ground, some low, and medium tree cover. This property would be great for crops and livestock. It would make a great hunting retreat with a lot of area for hunting white tail deer, bear, turkey, and rough grouse. This property has an older house with a 2 stall garage, 30'x64' pole shed and chicken coop. Located about 3 miles North of Nimrod. New sewer system installed in 2016 and has a drilled well.

Additional Details:

Lot Acres	400
Lot Dimensions	3975x5300x4000x5300
School District	820
Taxes	\$7,108
Taxes with Assessments	\$7,168
Tax Year	2024

Additional Features:

Driving Directions:

Take 71 South from Park Rapids to Sebeka turn left on MN 227. Head East 10.3 miles turn left on 14. Property should be on your left 22323



Listed By:
Coldwell Banker Crown Realtors

Affinity Real Estate Inc. participates in the Regional Multiple Listing Service of Minnesota, Inc Broker Reciprocity (sm) program, allowing us to display other broker's listings on our website. All properties are subject to prior sale, change or withdrawal.



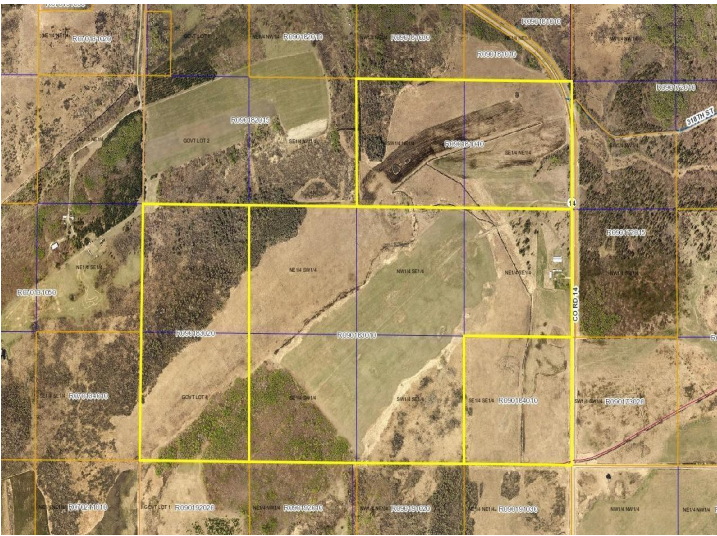
Call Affinity Real Estate

218-237-3333

info@affinityrealestate.com



Affinity Real Estate - 600 Park Avenue South - Park Rapids MN 56470



website: www.AffinityRealEstate.com | email: info@affinityrealestate.com | office: 218-237-3333 | fax:218-237-3377



\$589,900
MLS 6632936 Land
22323 County Road 14
Sebeka MN 56477



website: www.AffinityRealEstate.com | email: info@affinityrealestate.com | office: 218-237-3333 | fax:218-237-3377



\$589,900
MLS 6632936 Land
22323 County Road 14
Sebeka MN 56477



website: www.AffinityRealEstate.com | email: info@affinityrealestate.com | office: 218-237-3333 | fax:218-237-3377



\$589,900
MLS 6632936 Land
22323 County Road 14
Sebeka MN 56477



website: www.AffinityRealEstate.com | email: info@affinityrealestate.com | office: 218-237-3333 | fax:218-237-3377



\$589,900
MLS 6632936 Land
22323 County Road 14
Sebeka MN 56477



website: www.AffinityRealEstate.com | email: info@affinityrealestate.com | office: 218-237-3333 | fax:218-237-3377

Affinity
REAL ESTATE INC

\$589,900
MLS 6632936 Land
22323 County Road 14
Sebeka MN 56477



website: www.AffinityRealEstate.com | email: info@affinityrealestate.com | office: 218-237-3333 | fax:218-237-3377



\$589,900
MLS 6632936 Land
22323 County Road 14
Sebeka MN 56477