



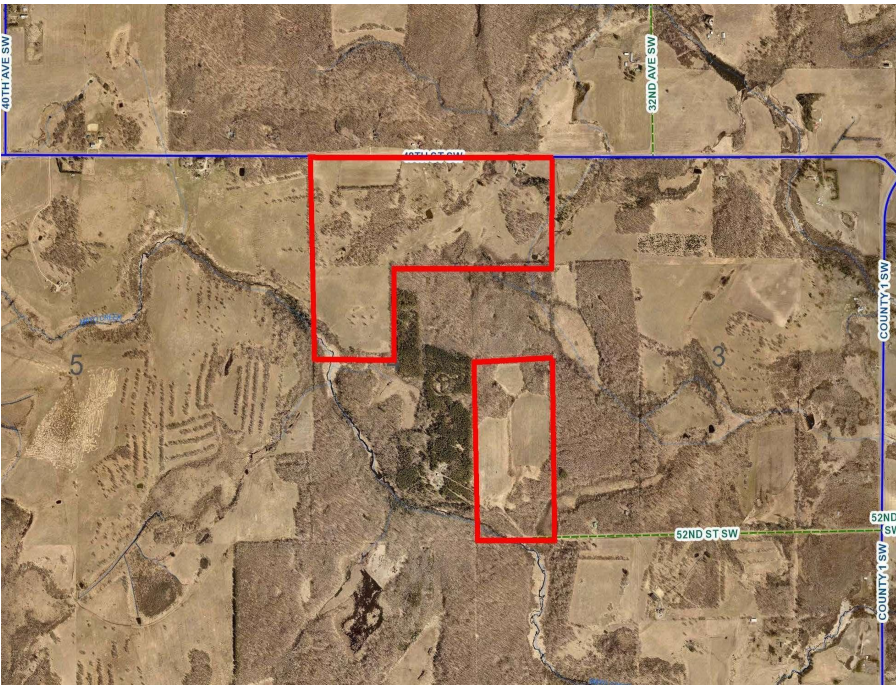
MLS 6633068 Land

\$1,620,000

270 Acres
Raw Land

3311 48th Street
Pequot Lakes MN 56472

Status: Active



Description:

Discover 270 acres of stunning, varied terrain featuring a mix of open meadows and wooded land with rolling hillsides. This expansive property boasts southern acreage that touches the tranquil Mayo Creek, offering serene views and natural beauty. There are no physical improvements or structures on the land, but an old door yard is included and sold as-is. Access is convenient via two township roads, 48th St SW and 52nd St SW. This property is a prime opportunity for building, recreation, or investment. For detailed location and topography, please refer to the aerial maps. Embrace the potential of this unique piece of land!

Additional Details:

Lot Acres	270
Lot Dimensions	IRR
School District	2174
Taxes	\$2,704
Taxes with Assessments	\$2,770
Tax Year	2024

Additional Features:

Driving Directions:

West from Pequot Lakes on #17 to Hwy #1, then N to 52nd St, left to S. 80 Acres, and from Hwy #1 N to 48th St the left to N 190 Acres.



Listed By:
Larson Group Real Estate/Kelle

Affinity Real Estate Inc. participates in the Regional Multiple Listing Service of Minnesota, Inc Broker Reciprocity (sm) program, allowing us to display other broker's listings on our website. All properties are subject to prior sale, change or withdrawal.



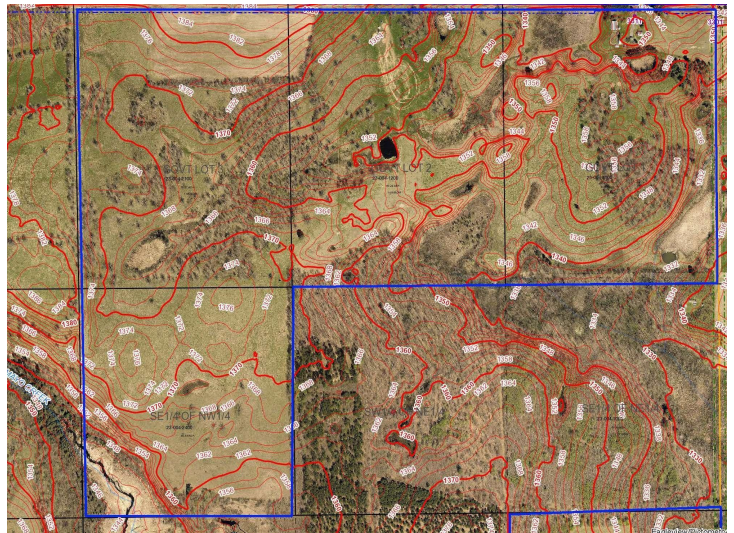
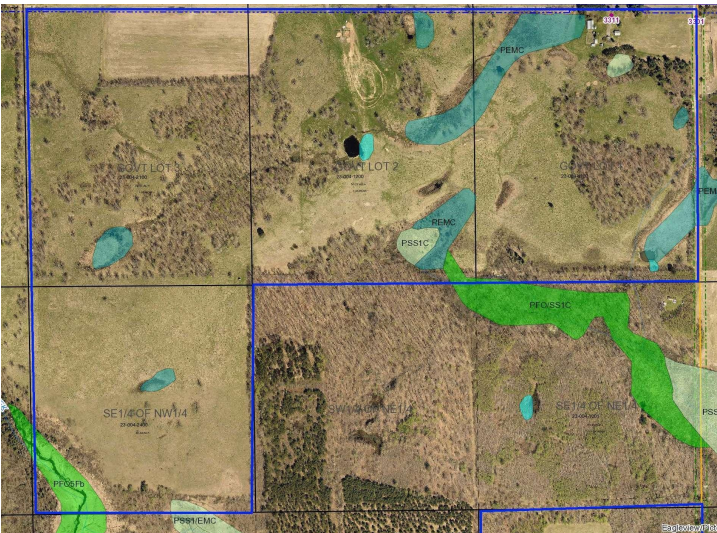
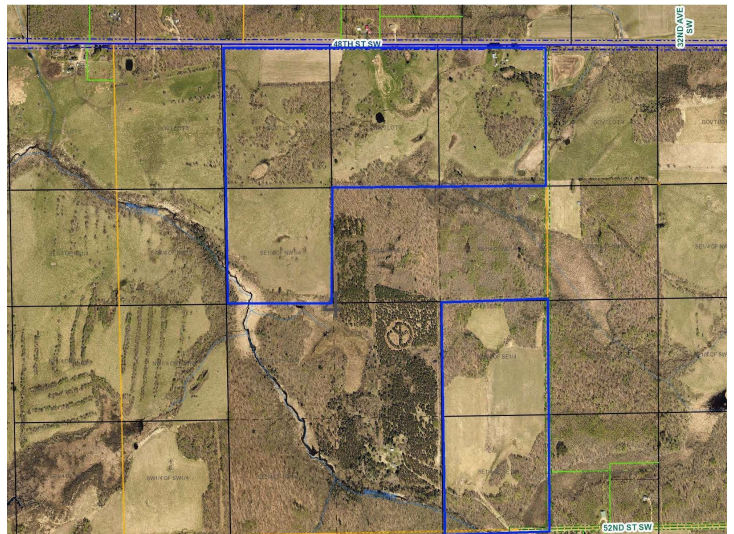
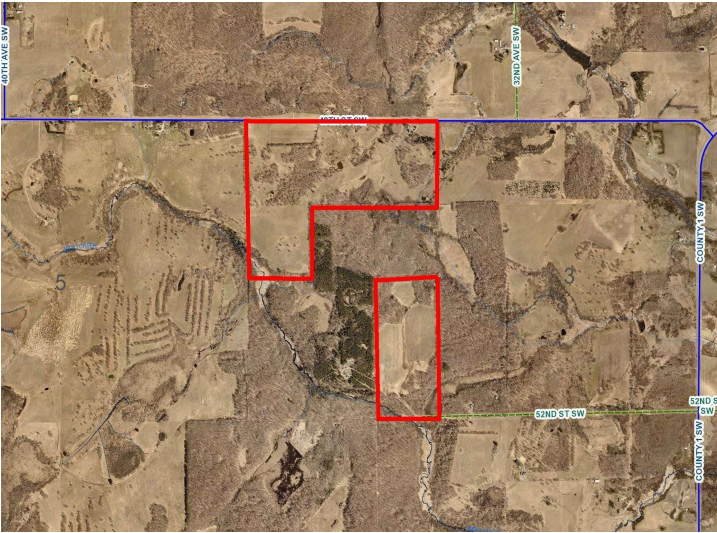
Call Affinity Real Estate

218-237-3333

info@affinityrealestate.com



Affinity Real Estate - 600 Park Avenue South - Park Rapids MN 56470



website: www.AffinityRealEstate.com | email: info@affinityrealestate.com | office: 218-237-3333 | fax: 218-237-3377



\$1,620,000
 MLS 6633068 Land
 3311 48th Street
 Pequot Lakes MN 56472



website: www.AffinityRealEstate.com | email: info@affinityrealestate.com | office: 218-237-3333 | fax:218-237-3377



\$1,620,000
MLS 6633068 Land
3311 48th Street
Pequot Lakes MN 56472



website: www.AffinityRealEstate.com | email: info@affinityrealestate.com | office: 218-237-3333 | fax:218-237-3377



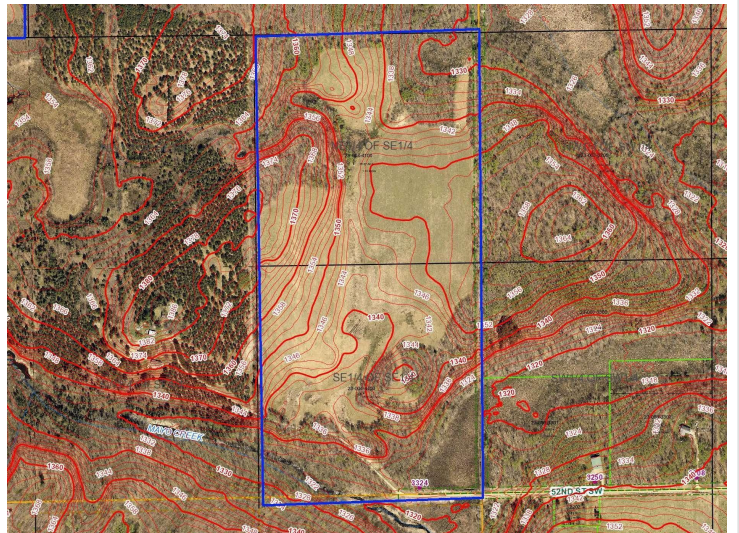
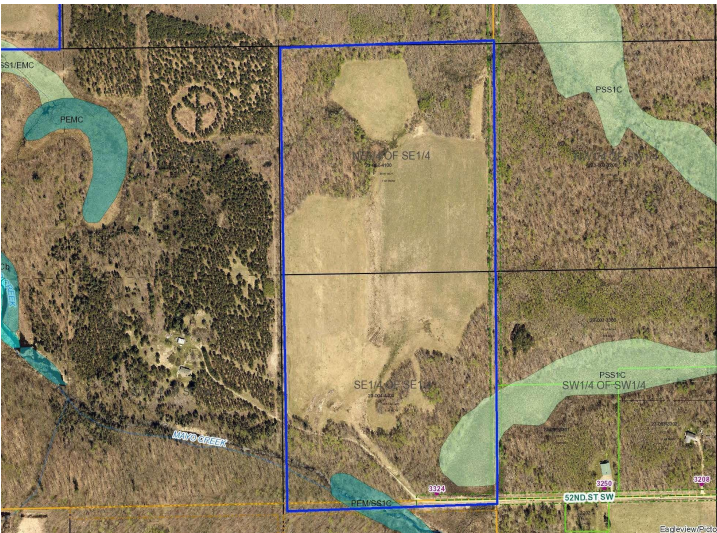
\$1,620,000
MLS 6633068 Land
3311 48th Street
Pequot Lakes MN 56472



website: www.AffinityRealEstate.com | email: info@affinityrealestate.com | office: 218-237-3333 | fax:218-237-3377



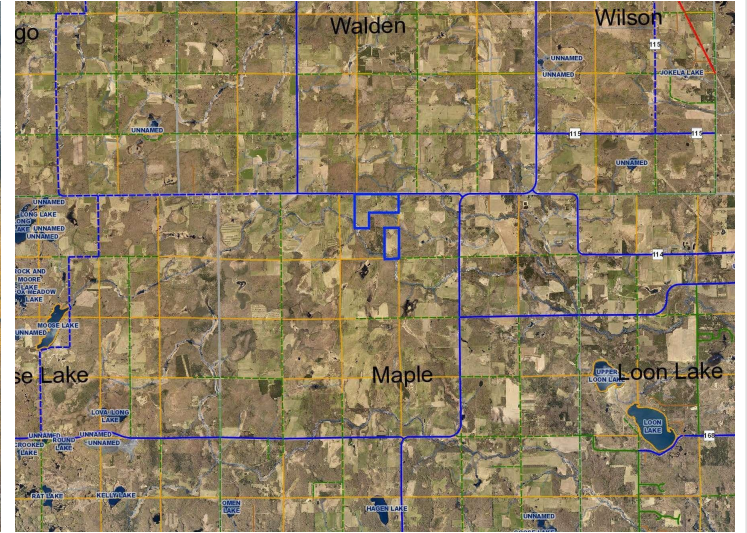
\$1,620,000
MLS 6633068 Land
3311 48th Street
Pequot Lakes MN 56472



website: www.AffinityRealEstate.com | email: info@affinityrealestate.com | office: 218-237-3333 | fax:218-237-3377



\$1,620,000
MLS 6633068 Land
3311 48th Street
Pequot Lakes MN 56472



website: www.AffinityRealEstate.com | email: info@affinityrealestate.com | office: 218-237-3333 | fax:218-237-3377



\$1,620,000
MLS 6633068 Land
3311 48th Street
Pequot Lakes MN 56472