



MLS 6633409 Residential

\$499,000

2,840 sq ft
4 bedrooms
4 baths

44811 County Hwy 14
Perham MN 56573

Status: Active

Description:

PRICED BELOW APPRAISED VALUE! 4 bdrm, 4 bath combined 2,840 sqft chalet-style home, with a completed second living unit. Nestled amidst the beauty of Otter Tail County, this newly crafted home offers luxury & rustic charm. Spanning 2.5 acres with mature pines, it provides a tranquil retreat with a 'cabin feel.' Discover a meticulously designed primary residence boasting 3 bdrms, 3 baths across 1,580 sqft. Home features 24 ft vaulted ceilings, bamboo window treatments, Cambria quartz countertops, custom pine doors & a grand staircase to the loft. Over 800 sqft of outdoor living space (poured concrete) connects the home to the second living unit which provides an additional 1,260 sqft of finished living space. Auxiliary living quarters is finished with blue stain pine, reclaimed steel accents, and includes a 13x29 bedroom on the second level, with a main-level bath. Located near Otter Tail's premier lakes, this home provides easy access to a wealth of outdoor fun. Watch the drone video.

Additional Details:

Year Built	2021
Lot Acres	2.5
Lot Dimensions	246 x 442
School District	549
Taxes	\$2,142
Taxes with Assessments	\$2,222
Tax Year	2024

Additional Features:

Basement: None **Fuel:** Electric, Propane **Heat:** Forced Air, Radiant Floor **Sewer:** Private Sewer, Septic System Compliant - Yes, Tank with Drainage Field **Water:** Submersible - 4 Inch, Private, Well **Air Conditioning:** Central Air

Driving Directions:

Take Hwy 78 South from Perham until Co Hwy 14, then turn left. The property will be on the left after 0.8 Miles



Listed By:
Jack Chivers Realty

Affinity Real Estate Inc. participates in the Regional Multiple Listing Service of Minnesota, Inc Broker Reciprocity (sm) program, allowing us to display other broker's listings on our website. All properties are subject to prior sale, change or withdrawal.



Call Affinity Real Estate

218-237-3333

info@affinityrealestate.com



Affinity Real Estate - 600 Park Avenue South - Park Rapids MN 56470



website: www.AffinityRealEstate.com | email: info@affinityrealestate.com | office: 218-237-3333 | fax:218-237-3377

Affinity
REAL ESTATE INC

\$499,000
MLS 6633409 Residential
44811 County Hwy 14
Perham MN 56573



website: www.AffinityRealEstate.com | email: info@affinityrealestate.com | office: 218-237-3333 | fax: 218-237-3377

Affinity
REAL ESTATE INC

\$499,000
MLS 6633409 Residential
44811 County Hwy 14
Perham MN 56573



website: www.AffinityRealEstate.com | email: info@affinityrealestate.com | office: 218-237-3333 | fax:218-237-3377



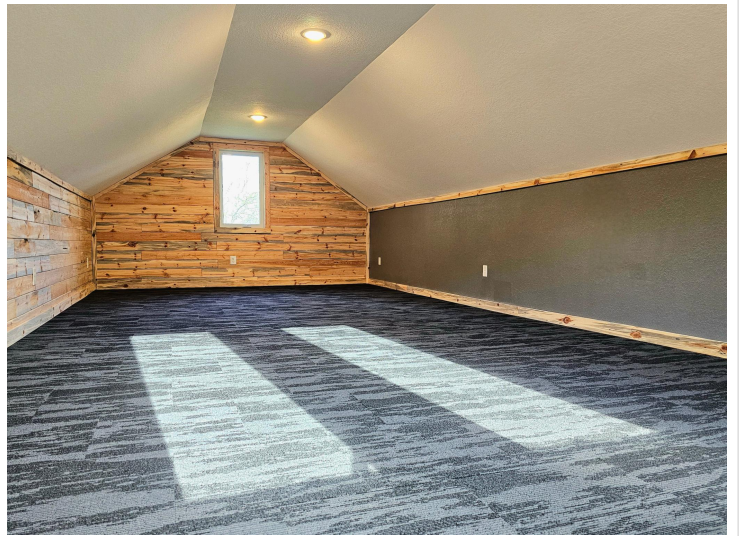
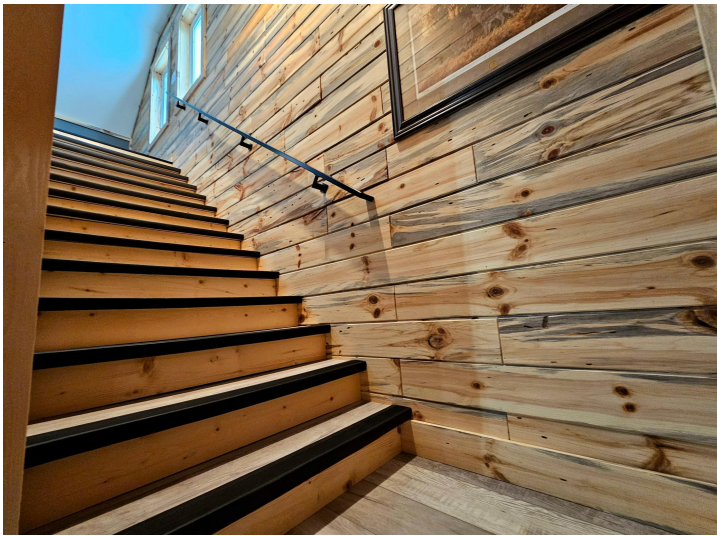
\$499,000
MLS 6633409 Residential
44811 County Hwy 14
Perham MN 56573



website: www.AffinityRealEstate.com | email: info@affinityrealestate.com | office: 218-237-3333 | fax: 218-237-3377

Affinity
REAL ESTATE INC

\$499,000
MLS 6633409 Residential
44811 County Hwy 14
Perham MN 56573



website: www.AffinityRealEstate.com | email: info@affinityrealestate.com | office: 218-237-3333 | fax:218-237-3377



\$499,000
MLS 6633409 Residential
44811 County Hwy 14
Perham MN 56573



website: www.AffinityRealEstate.com | email: info@affinityrealestate.com | office: 218-237-3333 | fax:218-237-3377



\$499,000
MLS 6633409 Residential
44811 County Hwy 14
Perham MN 56573



website: www.AffinityRealEstate.com | email: info@affinityrealestate.com | office: 218-237-3333 | fax:218-237-3377

Affinity
REAL ESTATE INC

\$499,000
MLS 6633409 Residential
44811 County Hwy 14
Perham MN 56573