

MLS 6633524 Land

\$89,900

1.49 Acres
Raw Land

Pillsbury and Lilac XX
Pequot Lakes MN 56472

Status: Active

Description:

Call for your personal tour today. Great commercial building site.

Additional Details:

Lot Acres	1.49
Lot Dimensions	345x189x364x186
School District	186
Taxes	\$672
Taxes with Assessments	\$672
Tax Year	2023

Additional Features:

Driving Directions:

Turn



Listed By:
Lakes & Leisure Realty

Affinity Real Estate Inc. participates in the Regional Multiple Listing Service of Minnesota, Inc Broker Reciprocity (sm) program, allowing us to display other broker's listings on our website. All properties are subject to prior sale, change or withdrawal.



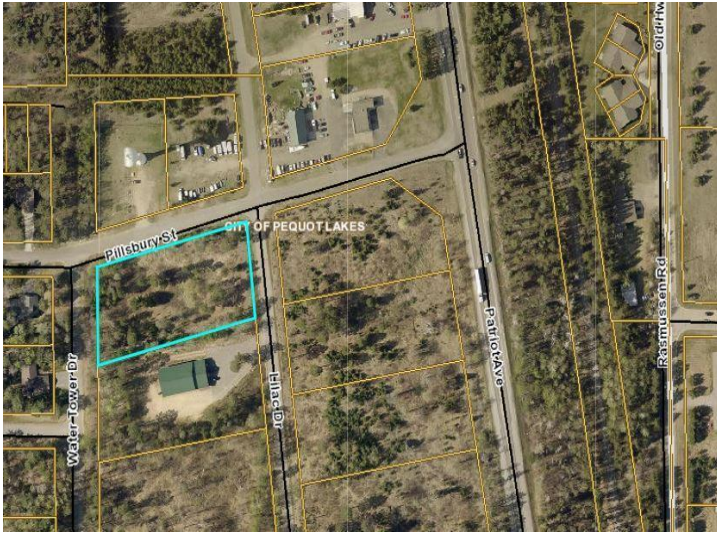
Call Affinity Real Estate

218-237-3333

info@affinityrealestate.com



Affinity Real Estate - 600 Park Avenue South - Park Rapids MN 56470



website: www.AffinityRealEstate.com | email: info@affinityrealestate.com | office: 218-237-3333 | fax:218-237-3377



\$89,900
MLS 6633524 Land
Pillsbury and Lilac XX
Pequot Lakes MN 56472