



MLS 6634129 Land

**\$550,000**

160 Acres  
Raw Land

47691 635th Avenue  
Sebeka MN 56477

Status: Active

**Description:**

Welcome to this high end hunting property that is turnkey ready!! Property features everything a deer, turkey, and grouse needs to thrive. Approximately 85 acres of the ground is agriculture fields. Currently planted in corn and hay. Manufactured home on the property is in need of TLC but consists of 3 bedrooms and 2 baths. Currently only one bathroom is plumbed with water lines. Electric, well, and septic all serve the home. Trail system is in place and brings you to prime deer stands. While walking the property the deer sign will be hard not to notice!! Scrapes and rubs all over. Not many big tracts of land come for sale in this area, this one will not last long!

**Additional Details:**

Lot Acres	160
Lot Dimensions	Irregular
School District	820
Taxes	\$1,076
Taxes with Assessments	\$1,076
Tax Year	2024

**Additional Features:**

**Driving Directions:**

Continue North on 635th Street approximately 1.5 miles. Property will be on the West side of the road.



Listed By:  
Timber Ghost Realty, LLC

Affinity Real Estate Inc. participates in the Regional Multiple Listing Service of Minnesota, Inc Broker Reciprocity (sm) program, allowing us to display other broker's listings on our website. All properties are subject to prior sale, change or withdrawal.



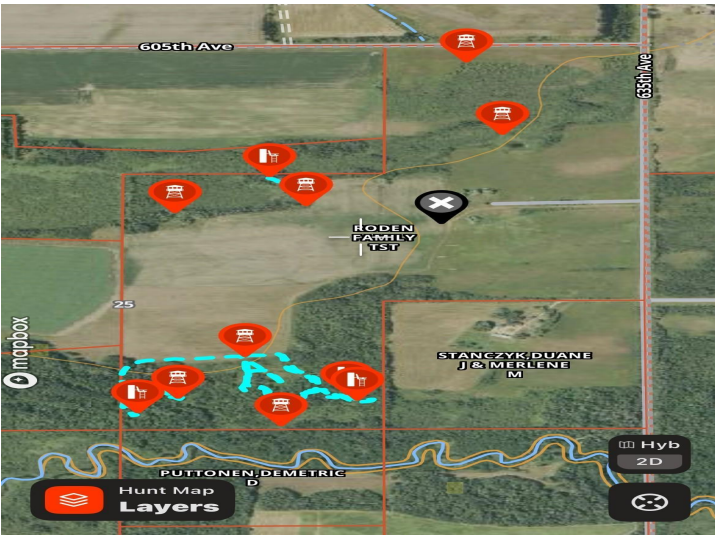
Call Affinity Real Estate

**218-237-3333**

[info@affinityrealestate.com](mailto:info@affinityrealestate.com)



Affinity Real Estate - 600 Park Avenue South - Park Rapids MN 56470



website: [www.AffinityRealEstate.com](http://www.AffinityRealEstate.com) | email: [info@affinityrealestate.com](mailto:info@affinityrealestate.com) | office: 218-237-3333 | fax: 218-237-3377



**\$550,000**  
MLS 6634129 Land  
47691 635th Avenue  
Sebeka MN 56477



website: [www.AffinityRealEstate.com](http://www.AffinityRealEstate.com) | email: [info@affinityrealestate.com](mailto:info@affinityrealestate.com) | office: 218-237-3333 | fax:218-237-3377

**Affinity**  
REAL ESTATE INC

**\$550,000**  
MLS 6634129 Land  
47691 635th Avenue  
Sebeka MN 56477



website: [www.AffinityRealEstate.com](http://www.AffinityRealEstate.com) | email: [info@affinityrealestate.com](mailto:info@affinityrealestate.com) | office: 218-237-3333 | fax:218-237-3377



**\$550,000**  
MLS 6634129 Land  
47691 635th Avenue  
Sebeka MN 56477



website: [www.AffinityRealEstate.com](http://www.AffinityRealEstate.com) | email: [info@affinityrealestate.com](mailto:info@affinityrealestate.com) | office: 218-237-3333 | fax:218-237-3377



**\$550,000**  
MLS 6634129 Land  
47691 635th Avenue  
Sebeka MN 56477



website: [www.AffinityRealEstate.com](http://www.AffinityRealEstate.com) | email: [info@affinityrealestate.com](mailto:info@affinityrealestate.com) | office: 218-237-3333 | fax:218-237-3377



**\$550,000**  
MLS 6634129 Land  
47691 635th Avenue  
Sebeka MN 56477



website: [www.AffinityRealEstate.com](http://www.AffinityRealEstate.com) | email: [info@affinityrealestate.com](mailto:info@affinityrealestate.com) | office: 218-237-3333 | fax:218-237-3377



**\$550,000**  
MLS 6634129 Land  
47691 635th Avenue  
Sebeka MN 56477

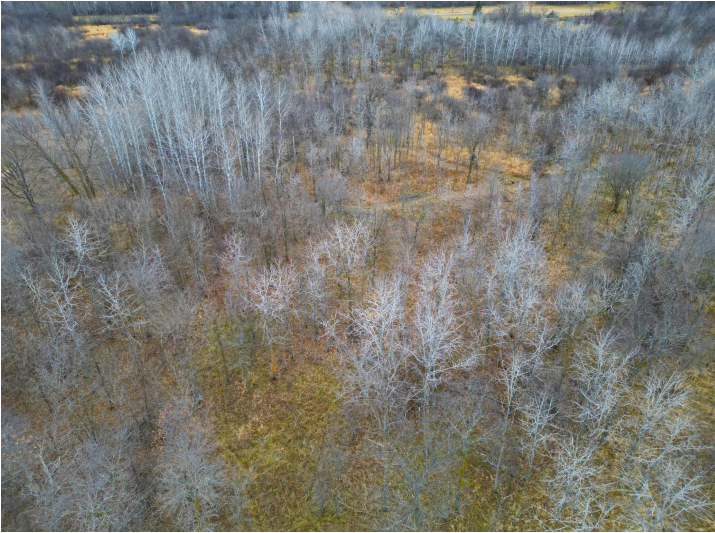


website: [www.AffinityRealEstate.com](http://www.AffinityRealEstate.com) | email: [info@affinityrealestate.com](mailto:info@affinityrealestate.com) | office: 218-237-3333 | fax:218-237-3377

**Affinity**  
REAL ESTATE INC

**\$550,000**  
MLS 6634129 Land  
47691 635th Avenue  
Sebeka MN 56477





website: [www.AffinityRealEstate.com](http://www.AffinityRealEstate.com) | email: [info@affinityrealestate.com](mailto:info@affinityrealestate.com) | office: 218-237-3333 | fax:218-237-3377



**\$550,000**  
MLS 6634129 Land  
47691 635th Avenue  
Sebeka MN 56477



website: [www.AffinityRealEstate.com](http://www.AffinityRealEstate.com) | email: [info@affinityrealestate.com](mailto:info@affinityrealestate.com) | office: 218-237-3333 | fax:218-237-3377

**Affinity**  
REAL ESTATE INC

**\$550,000**  
MLS 6634129 Land  
47691 635th Avenue  
Sebeka MN 56477



website: [www.AffinityRealEstate.com](http://www.AffinityRealEstate.com) | email: [info@affinityrealestate.com](mailto:info@affinityrealestate.com) | office: 218-237-3333 | fax: 218-237-3377

**Affinity**  
REAL ESTATE INC

**\$550,000**  
MLS 6634129 Land  
47691 635th Avenue  
Sebeka MN 56477



website: [www.AffinityRealEstate.com](http://www.AffinityRealEstate.com) | email: [info@affinityrealestate.com](mailto:info@affinityrealestate.com) | office: 218-237-3333 | fax:218-237-3377

**Affinity**  
REAL ESTATE INC

**\$550,000**  
MLS 6634129 Land  
47691 635th Avenue  
Sebeka MN 56477



website: [www.AffinityRealEstate.com](http://www.AffinityRealEstate.com) | email: [info@affinityrealestate.com](mailto:info@affinityrealestate.com) | office: 218-237-3333 | fax:218-237-3377



**\$550,000**  
MLS 6634129 Land  
47691 635th Avenue  
Sebeka MN 56477



website: [www.AffinityRealEstate.com](http://www.AffinityRealEstate.com) | email: [info@affinityrealestate.com](mailto:info@affinityrealestate.com) | office: 218-237-3333 | fax:218-237-3377

**Affinity**  
REAL ESTATE INC

**\$550,000**  
MLS 6634129 Land  
47691 635th Avenue  
Sebeka MN 56477



website: [www.AffinityRealEstate.com](http://www.AffinityRealEstate.com) | email: [info@affinityrealestate.com](mailto:info@affinityrealestate.com) | office: 218-237-3333 | fax:218-237-3377

**Affinity**  
REAL ESTATE INC

**\$550,000**  
MLS 6634129 Land  
47691 635th Avenue  
Sebeka MN 56477



website: [www.AffinityRealEstate.com](http://www.AffinityRealEstate.com) | email: [info@affinityrealestate.com](mailto:info@affinityrealestate.com) | office: 218-237-3333 | fax:218-237-3377



**\$550,000**  
MLS 6634129 Land  
47691 635th Avenue  
Sebeka MN 56477





website: [www.AffinityRealEstate.com](http://www.AffinityRealEstate.com) | email: [info@affinityrealestate.com](mailto:info@affinityrealestate.com) | office: 218-237-3333 | fax:218-237-3377



**\$550,000**  
MLS 6634129 Land  
47691 635th Avenue  
Sebeka MN 56477



website: [www.AffinityRealEstate.com](http://www.AffinityRealEstate.com) | email: [info@affinityrealestate.com](mailto:info@affinityrealestate.com) | office: 218-237-3333 | fax:218-237-3377



**\$550,000**  
MLS 6634129 Land  
47691 635th Avenue  
Sebeka MN 56477