



MLS 6634332 Land

\$61,000

0.46 Acres
Site Plan Approved

1940 Longview Drive
Detroit Lakes MN 56501

Status: Active

Description:

Low Specials at Long Pine Estates

Long Pine Estates offers a serene living experience, nestled near the western edge of Detroit Lakes and just a short walk from the tranquil shores of Long Lake. This charming development provides homeowners with the perfect balance of peaceful seclusion, thanks to a natural border of mature pine trees that shield residents from the hustle and bustle of city life.

While you enjoy the quiet retreat, the community's location also offers easy access to the amenities and services of Detroit Lakes, a thriving community just a short distance away. The best of both worlds—peaceful, natural surroundings combined with the convenience of city living.

With low specials, now is the perfect time to invest in your dream home at Long Pine Estates!

Additional Details:

Lot Acres	0.46
Lot Dimensions	146.77 x
School District	22
Taxes	\$418
Taxes with Assessments	\$1,646
Tax Year	2024

Additional Features:

Driving Directions:

Hwy 59 S to Willow St, right on Longview Dr and left on Longview Dr



Listed By:
Counselor Realty Detroit Lakes

Affinity Real Estate Inc. participates in the Regional Multiple Listing Service of Minnesota, Inc Broker Reciprocity (sm) program, allowing us to display other broker's listings on our website. All properties are subject to prior sale, change or withdrawal.



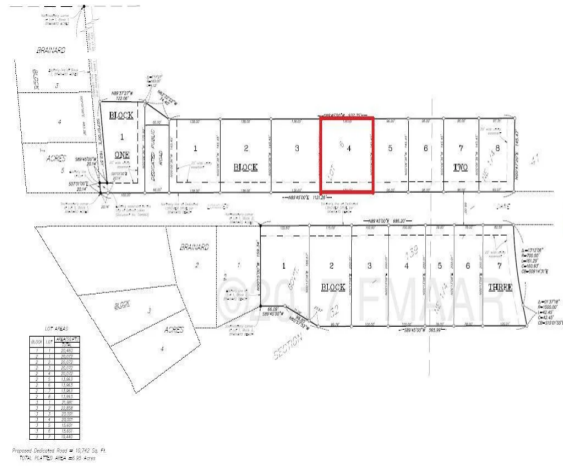
Call Affinity Real Estate

218-237-3333

info@affinityrealestate.com



Affinity Real Estate - 600 Park Avenue South - Park Rapids MN 56470



website: www.AffinityRealEstate.com | email: info@affinityrealestate.com | office: 218-237-3333 | fax:218-237-3377



\$61,000
 MLS 6634332 Land
 1940 Longview Drive
 Detroit Lakes MN 56501