



MLS 6634367 Lake Home

\$680,000

2,144 sq ft
3 bedrooms
2 baths

1351 Norrona Court
Bemidji MN 56601

Waterfront: Marquette

Status: Active

Description:

Lake Marquette home ready for a new owner! 3 bedroom, 1.75 bath home that is a quick drive to Bemidji via land AND a quick ride to Lakes Irving and Bemidji via water. This home features a brick fireplace in the lower level family room, two kitchens, a dining room with lots of natural light, a main level laundry room, a walk in pantry, and good bones waiting for your personal touch.

Additional Details:


Year Built	1977
Lot Acres	0.99
Lot Dimensions	125x100x70x200x195x300
Garage Stalls	2
School District	31
Taxes	\$4,062
Taxes with Assessments	\$4,062
Tax Year	2024

Additional Features:

Basement: Finished, Walkout **Fuel:** Natural Gas **Garage:** 2 **Heat:** Forced Air **Sewer:** Private Sewer **Water:** Private **Air Conditioning:** None

Driving Directions:

Hwy 71 S to west on Oak Hills Rd SW, north on Jackson Ave SW, west on Norrona to property on the right.



Listed By:
Realty Experts, LLC

Affinity Real Estate Inc. participates in the Regional Multiple Listing Service of Minnesota, Inc Broker Reciprocity (sm) program, allowing us to display other broker's listings on our website. All properties are subject to prior sale, change or withdrawal.



Call Affinity Real Estate
218-237-3333
info@affinityrealestate.com

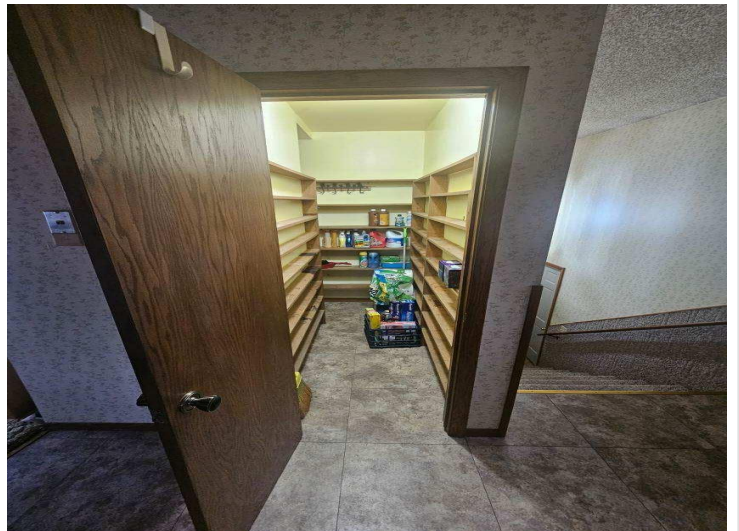
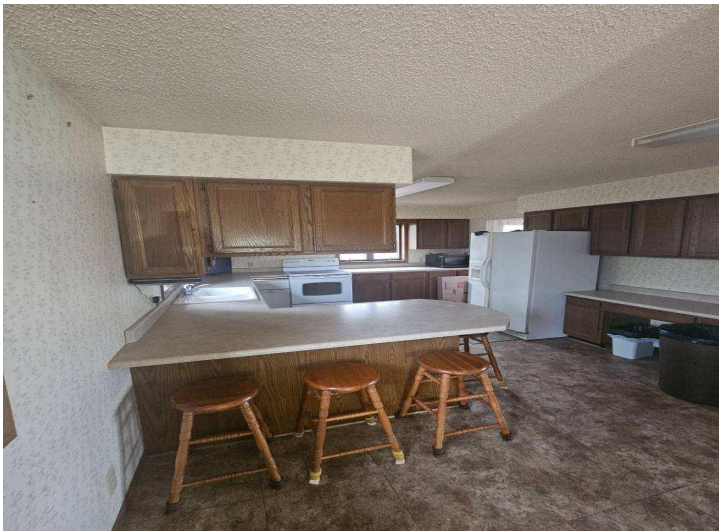
Affinity Real Estate - 600 Park Avenue South - Park Rapids MN 56470



website: www.AffinityRealEstate.com | email: info@affinityrealestate.com | office: 218-237-3333 | fax:218-237-3377



\$680,000
MLS 6634367 Lake Home
1351 Norrona Court
Bemidji MN 56601



website: www.AffinityRealEstate.com | email: info@affinityrealestate.com | office: 218-237-3333 | fax:218-237-3377

Affinity
REAL ESTATE INC

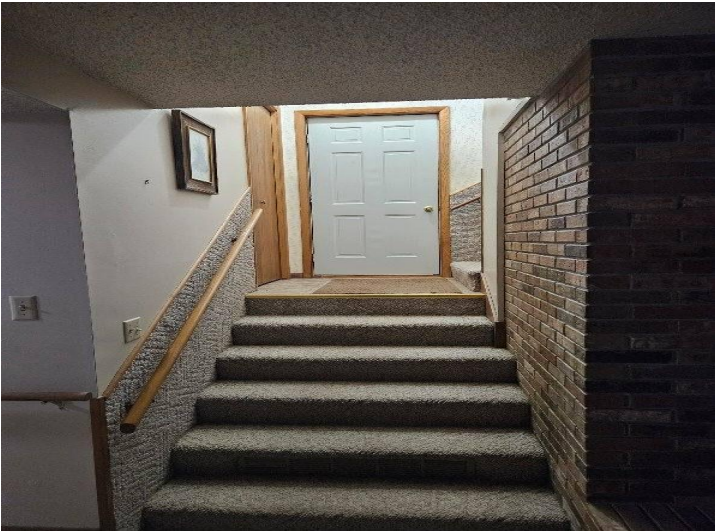
\$680,000
MLS 6634367 Lake Home
1351 Norrona Court
Bemidji MN 56601



website: www.AffinityRealEstate.com | email: info@affinityrealestate.com | office: 218-237-3333 | fax: 218-237-3377

Affinity
REAL ESTATE INC

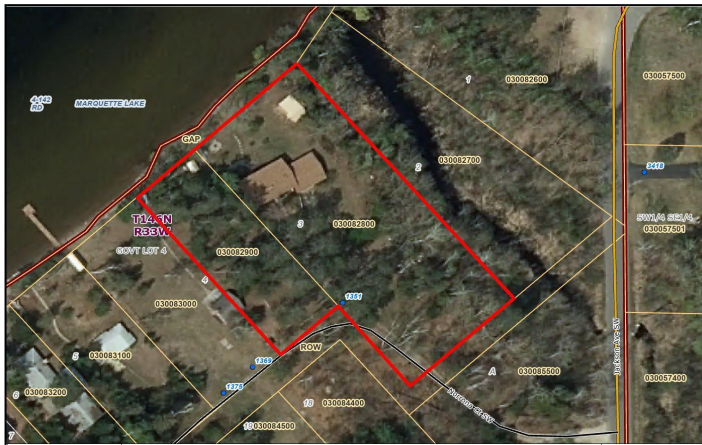
\$680,000
MLS 6634367 Lake Home
1351 Norrona Court
Bemidji MN 56601



website: www.AffinityRealEstate.com | email: info@affinityrealestate.com | office: 218-237-3333 | fax:218-237-3377

Affinity
REAL ESTATE INC

\$680,000
MLS 6634367 Lake Home
1351 Norrona Court
Bemidji MN 56601



1351 Norrone Ct
 Beltrami County Minnesota

These data are provided on an "AS-IS" basis, without warranty of any kind, expressed or implied, including but not limited to any warranty as to their performance, merchantability, or fitness for any particular purpose.

1:1,056 Date: 11/22/2024
 This map is not a substitute for accurate field surveys or for locating actual property lines and any adjacent features.



1351 Norrone Ct SW
 Beltrami County Minnesota

These data are provided on an "AS-IS" basis, without warranty of any kind, expressed or implied, including but not limited to any warranty as to their performance, merchantability, or fitness for any particular purpose.

1:4,225 Date: 11/22/2024
 This map is not a substitute for accurate field surveys or for locating actual property lines and any adjacent features.

website: www.AffinityRealEstate.com | email: info@affinityrealestate.com | office: 218-237-3333 | fax: 218-237-3377



\$680,000
 MLS 6634367 Lake Home
 1351 Norrone Court
 Bemidji MN 56601