



MLS 6635019 Lake Home

\$390,000

944 sq ft
2 bedrooms
1 baths

14478 Big Pine Trail
Crosslake MN 56442

Waterfront: Pine Lake (18026100)

Status: Active

Description:

Take a look at this remodeled year-round cabin on Big Pine Lake. It features a landscaped west-facing lot with 51 feet of prime lower elevation and a sandy beach. The updated 2-bedroom cabin has an Up-North feel, complete with knotty pine accents, new windows, and improved insulation. You'll find ample storage in the detached 2-stall garage, which measures 24 x 24, as well as a storage shed and a lakeside beach house. Enjoy being just minutes away from all that Crosslake has to offer, including various retail shops, premier golf courses, and excellent dining options. Recreation opportunities abound on Big Pine Lake, where you can enjoy boating, kayaking, canoeing, great fishing, and more. End the evening by taking in stunning sunset views over big Pine Lake while you relax by the lake!

Additional Details:

Year Built	1990
Lot Acres	0.5
Lot Dimensions	51 x 300 x 59.6 x 24.2 x 300
Garage Stalls	2
School District	186
Taxes	\$1,651
Taxes with Assessments	\$1,876
Tax Year	2025

Additional Features:

Fuel: Natural Gas **Heat:** Fireplace(s), Other

Driving Directions:

From the intersection of County Road 3 and County Road 66 in Crosslake take County Road 33 South for 2.7 miles, turn left onto Big Pine Trail, and go 1.3 miles to the property addressed 14478, it will be on your left.



Listed By:
Larson Group Real Estate/Kelle

Affinity Real Estate Inc. participates in the Regional Multiple Listing Service of Minnesota, Inc Broker Reciprocity (sm) program, allowing us to display other broker's listings on our website. All properties are subject to prior sale, change or withdrawal.



Call Affinity Real Estate

218-237-3333

info@affinityrealestate.com



Affinity Real Estate - 600 Park Avenue South - Park Rapids MN 56470



website: www.AffinityRealEstate.com | email: info@affinityrealestate.com | office: 218-237-3333 | fax: 218-237-3377

Affinity
REAL ESTATE INC

\$390,000
MLS 6635019 Lake Home
14478 Big Pine Trail
Crosslake MN 56442



website: www.AffinityRealEstate.com | email: info@affinityrealestate.com | office: 218-237-3333 | fax: 218-237-3377

Affinity
REAL ESTATE INC

\$390,000
MLS 6635019 Lake Home
14478 Big Pine Trail
Crosslake MN 56442



website: www.AffinityRealEstate.com | email: info@affinityrealestate.com | office: 218-237-3333 | fax: 218-237-3377

Affinity
REAL ESTATE INC

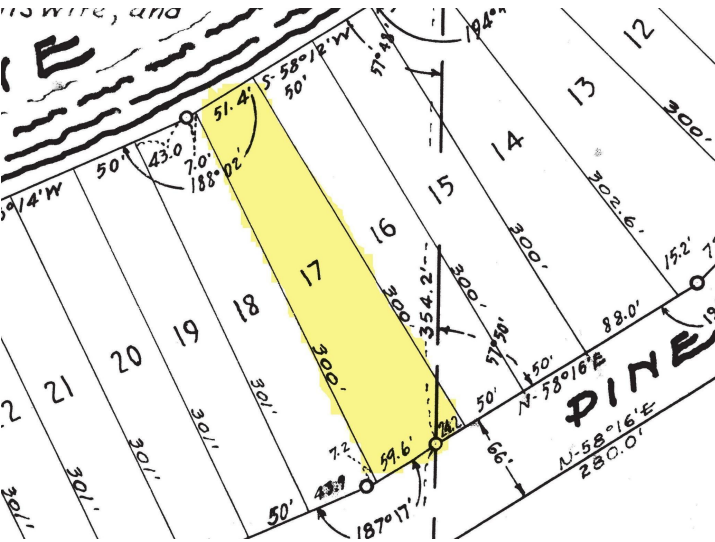
\$390,000
MLS 6635019 Lake Home
14478 Big Pine Trail
Crosslake MN 56442



website: www.AffinityRealEstate.com | email: info@affinityrealestate.com | office: 218-237-3333 | fax: 218-237-3377

Affinity
REAL ESTATE INC

\$390,000
MLS 6635019 Lake Home
14478 Big Pine Trail
Crosslake MN 56442



website: www.AffinityRealEstate.com | email: info@affinityrealestate.com | office: 218-237-3333 | fax: 218-237-3377



\$390,000
 MLS 6635019 Lake Home
 14478 Big Pine Trail
 Crosslake MN 56442