



MLS 6635208 Lake Land

\$189,000

Description:

If you're looking for great swimming, this lot has hard sand bottom and a beautiful and breathtaking west facing view of Midge Lake. Decent fishing. Minutes from Bemidji and Cass Lake. 1.7 acres, 185' of frontage. Mature trees and some Red Pine. Great flat area to build your dream home or cabin. Sandy bottom lakeshore is hard to find. Please come and look!

Additional Details:

Lot Acres	1.65
Lot Dimensions	173x463
School District	115
Taxes	\$1,392
Taxes with Assessments	\$1,392
Tax Year	2024

Additional Features:

Driving Directions:

East on Hwy 2, right on County 101, right on 500th St, right on Winding Gladen Dr, right on Vaxjo Ln.



Listed By:
Century 21 Dickinson

Affinity Real Estate Inc. participates in the Regional Multiple Listing Service of Minnesota, Inc Broker Reciprocity (sm) program, allowing us to display other broker's listings on our website. All properties are subject to prior sale, change or withdrawal.



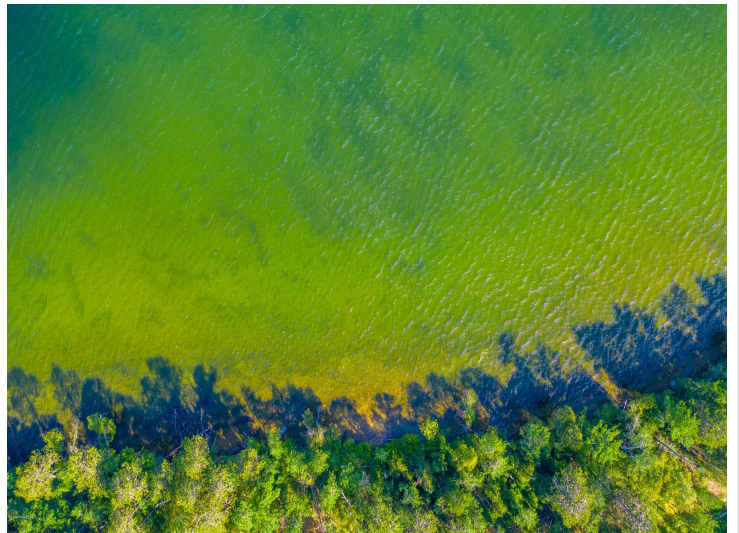
Call Affinity Real Estate

218-237-3333

info@affinityrealestate.com



Affinity Real Estate - 600 Park Avenue South - Park Rapids MN 56470



website: www.AffinityRealEstate.com | email: info@affinityrealestate.com | office: 218-237-3333 | fax:218-237-3377



\$189,000
MLS 6635208 Lake Land
TBD Vaxjo Lane
Cass Lake MN 56633



website: www.AffinityRealEstate.com | email: info@affinityrealestate.com | office: 218-237-3333 | fax:218-237-3377



\$189,000
MLS 6635208 Lake Land
TBD Vaxjo Lane
Cass Lake MN 56633



website: www.AffinityRealEstate.com | email: info@affinityrealestate.com | office: 218-237-3333 | fax:218-237-3377

Affinity
REAL ESTATE INC

\$189,000
MLS 6635208 Lake Land
TBD Vaxjo Lane
Cass Lake MN 56633



website: www.AffinityRealEstate.com | email: info@affinityrealestate.com | office: 218-237-3333 | fax: 218-237-3377



\$189,000
MLS 6635208 Lake Land
TBD Vaxjo Lane
Cass Lake MN 56633