



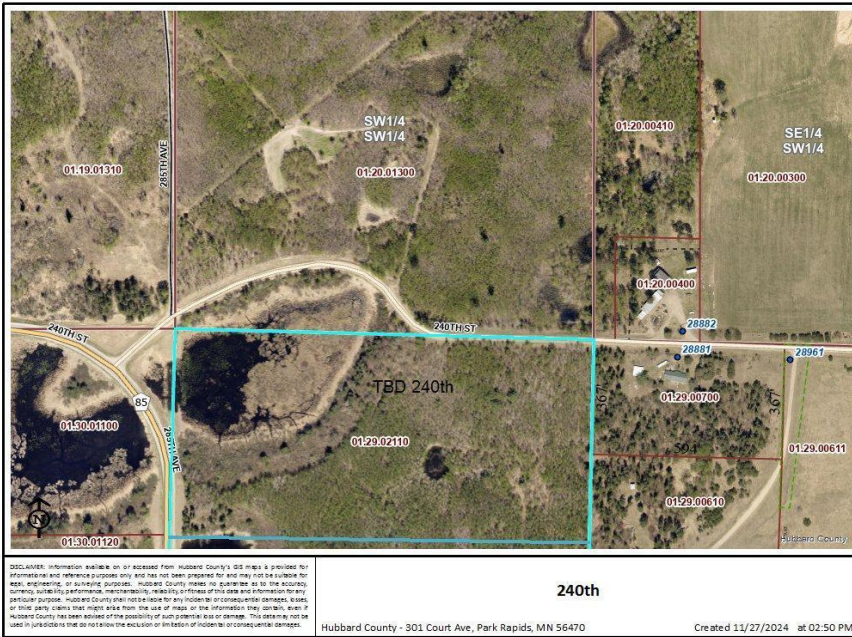
MLS 6635665 Land

**\$94,700**

20 Acres  
Subdivided

TBD 240th Street  
Akeley MN 56433

Status: Active



**Description:**

Discover 20 acres of pristine land NE of Nevis, Perfect for your dream retreat. This beautifully wooded tract offers excellent road access, rolling hills, and serene wildlife ponds. With great tree cover and trails throughout, you'll find several ideal building sites with easy access to power. Conveniently located near the Heartland Trail, Paul Bunyan State Forest, and numerous lakes, this property is a nature lover's paradise. Don't miss out on this incredible opportunity to own a piece of tranquility!

**Additional Details:**

Lot Acres	20
Lot Dimensions	1320x660
School District	113
Taxes	\$494
Taxes with Assessments	\$494
Tax Year	2024

**Additional Features:**

**Driving Directions:**

From Highways 71/34 in Park Rapids go East on 34. Past Nevis take a left on 285th to a right on 240th to sign for property.



Listed By:  
Wolff & Simon Real Estate

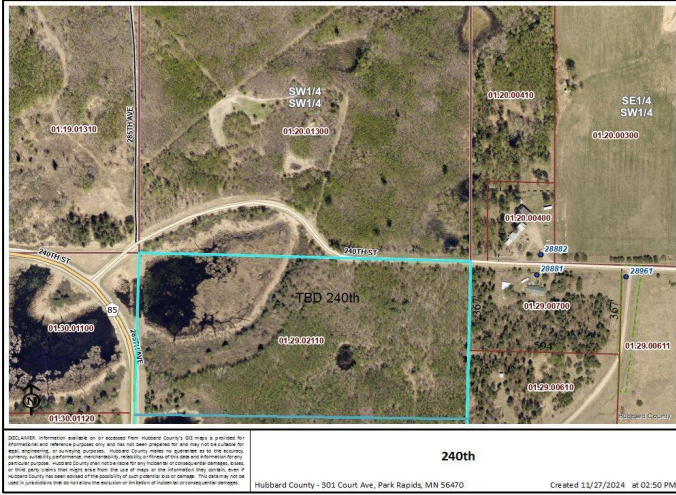
Affinity Real Estate Inc. participates in the Regional Multiple Listing Service of Minnesota, Inc Broker Reciprocity (sm) program, allowing us to display other broker's listings on our website. All properties are subject to prior sale, change or withdrawal.



Call Affinity Real Estate  
**218-237-3333**  
[info@affinityrealestate.com](mailto:info@affinityrealestate.com)



Affinity Real Estate - 600 Park Avenue South - Park Rapids MN 56470



240th  
 Hubbard County - 301 Court Ave, Park Rapids, MN 56470  
 Created 11/27/2024 @ 02:50 PM

website: [www.AffinityRealEstate.com](http://www.AffinityRealEstate.com) | email: [info@affinityrealestate.com](mailto:info@affinityrealestate.com) | office: 218-237-3333 | fax:218-237-3377



**\$94,700**  
 MLS 6635665 Land  
 TBD 240th Street  
 Akeley MN 56433