



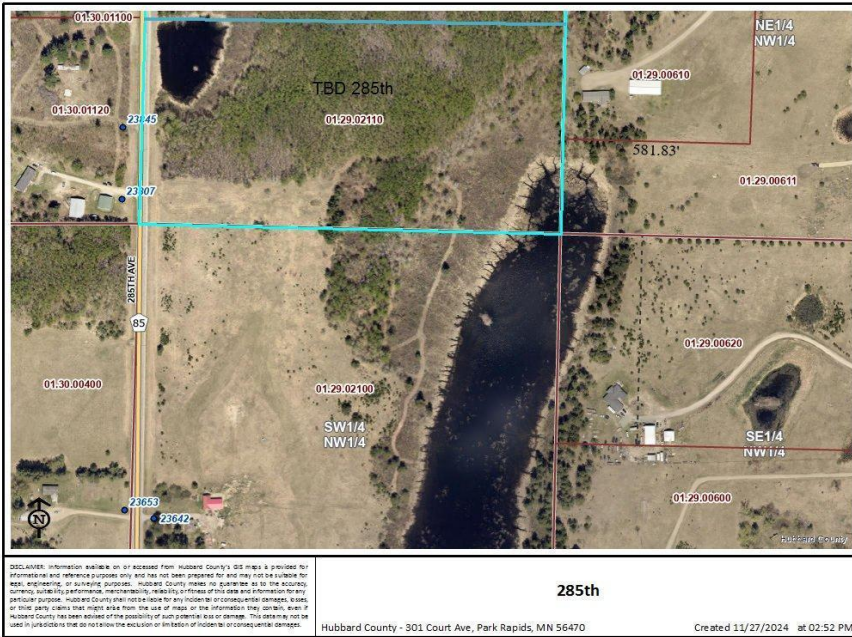
MLS 6635699 Land

**\$98,700**

20 Acres  
Subdivided

TBD 285th Street  
Akeley MN 56433

Status: Active



**Description:**

Explore an exceptional 20-acre parcel of pristine land located Northeast of Nevis, ideally suited for the establishment of a retreat. This beautifully wooded tract boasts excellent road access, gently rolling hills, and tranquil wildlife ponds. With abundant tree coverage and well-maintained trails, there are multiple suitable building sites, all with convenient access to electricity. The property is strategically situated near the Heartland Trail, Paul Bunyan State Forest, and a variety of lakes, making it a veritable paradise for nature enthusiasts. This opportunity to acquire a piece of serene land should not be overlooked.

**Additional Details:**

Lot Acres	20
Lot Dimensions	660x1320
School District	113
Taxes	\$494
Taxes with Assessments	\$494
Tax Year	2024

**Additional Features:**

**Driving Directions:**

From Highways 71/34 in Park Rapids go East on 34. Past Nevis take a left on 285th to sign for property.



Listed By:  
Wolff & Simon Real Estate

Affinity Real Estate Inc. participates in the Regional Multiple Listing Service of Minnesota, Inc Broker Reciprocity (sm) program, allowing us to display other broker's listings on our website. All properties are subject to prior sale, change or withdrawal.



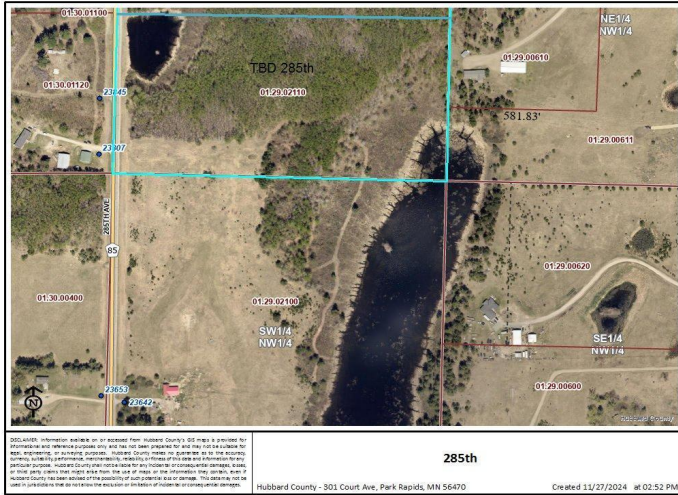
Call Affinity Real Estate

**218-237-3333**

[info@affinityrealestate.com](mailto:info@affinityrealestate.com)



Affinity Real Estate - 600 Park Avenue South - Park Rapids MN 56470



285th  
 Hubbard County - 301 Court Ave, Park Rapids, MN 56470  
 Created 12/27/2024 @ 02:52 PM

website: [www.AffinityRealEstate.com](http://www.AffinityRealEstate.com) | email: [info@affinityrealestate.com](mailto:info@affinityrealestate.com) | office: 218-237-3333 | fax: 218-237-3377



**\$98,700**  
 MLS 6635699 Land  
 TBD 285th Street  
 Akeley MN 56433