



MLS 6635833 Residential

\$274,900

2,272 sq ft
3 bedrooms
2 baths

821 10th Street
Wadena MN 56482

Status: Active

Description:

Check it out. Located in SW Wadena on dead end street. 3 Bedroom on large lot with mature oak trees and private back yard. Large living room, spacious dining, kitchen w/ample counter space, and 4 season room with gas fireplace. Partially finished lower level with ample built-in storage. Oversized 2 car attached garage with 2nd stairway to lower level from garage and 20x30 detached garage/shop with heat.

Additional Details:

Year Built	1975
Lot Acres	0.32
Lot Dimensions	100x137
Garage Stalls	4
School District	2155
Taxes	\$2,832
Taxes with Assessments	\$2,832
Tax Year	2024

Additional Features:

Basement: Full **Fuel:** Electric, Natural Gas **Garage:** 4 **Heat:** Forced Air **Sewer:** City Sewer/Connected **Water:** City Water/Connected **Air Conditioning:** Central Air

Driving Directions:

Jefferson Street South to Irving Avenue, west on Irving Avenue to 10th Street SW, North on 10th Street to property on west side of street.



Listed By:
The Gores Company

Affinity Real Estate Inc. participates in the Regional Multiple Listing Service of Minnesota, Inc Broker Reciprocity (sm) program, allowing us to display other broker's listings on our website. All properties are subject to prior sale, change or withdrawal.



Call Affinity Real Estate

218-237-3333

info@affinityrealestate.com



Affinity Real Estate - 600 Park Avenue South - Park Rapids MN 56470



website: www.AffinityRealEstate.com | email: info@affinityrealestate.com | office: 218-237-3333 | fax:218-237-3377

Affinity
REAL ESTATE INC

\$274,900
MLS 6635833 Residential
821 10th Street
Wadena MN 56482



website: www.AffinityRealEstate.com | email: info@affinityrealestate.com | office: 218-237-3333 | fax:218-237-3377

Affinity
REAL ESTATE INC

\$274,900
MLS 6635833 Residential
821 10th Street
Wadena MN 56482



website: www.AffinityRealEstate.com | email: info@affinityrealestate.com | office: 218-237-3333 | fax:218-237-3377

Affinity
REAL ESTATE INC

\$274,900
MLS 6635833 Residential
821 10th Street
Wadena MN 56482



website: www.AffinityRealEstate.com | email: info@affinityrealestate.com | office: 218-237-3333 | fax:218-237-3377

Affinity
REAL ESTATE INC

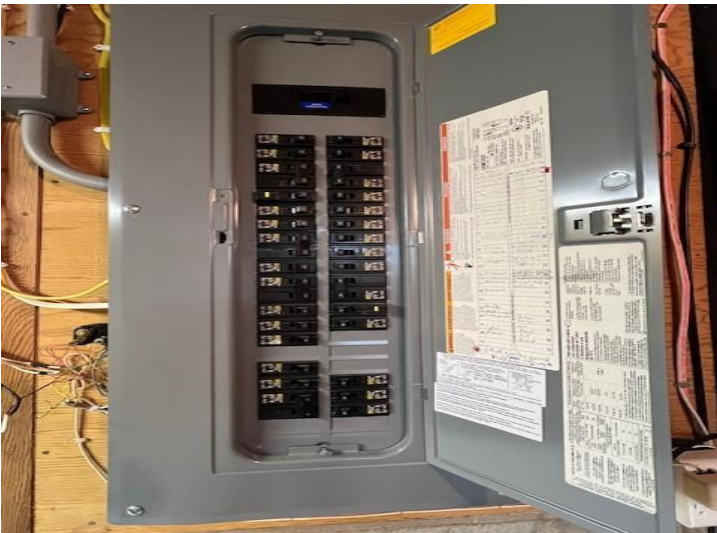
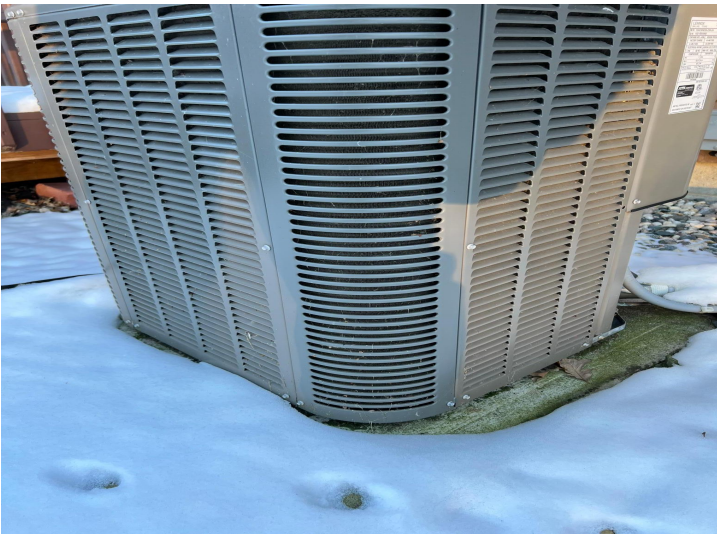
\$274,900
MLS 6635833 Residential
821 10th Street
Wadena MN 56482



website: www.AffinityRealEstate.com | email: info@affinityrealestate.com | office: 218-237-3333 | fax:218-237-3377

Affinity
REAL ESTATE INC

\$274,900
MLS 6635833 Residential
821 10th Street
Wadena MN 56482



website: www.AffinityRealEstate.com | email: info@affinityrealestate.com | office: 218-237-3333 | fax:218-237-3377



\$274,900
MLS 6635833 Residential
821 10th Street
Wadena MN 56482



website: www.AffinityRealEstate.com | email: info@affinityrealestate.com | office: 218-237-3333 | fax: 218-237-3377

Affinity
REAL ESTATE INC

\$274,900
MLS 6635833 Residential
821 10th Street
Wadena MN 56482



website: www.AffinityRealEstate.com | email: info@affinityrealestate.com | office: 218-237-3333 | fax:218-237-3377



\$274,900
MLS 6635833 Residential
821 10th Street
Wadena MN 56482