



MLS 6636237 Lake Land

\$249,000

Description:

Build Your Lake Home or Cabin Just 15 Feet from the Water's Edge – Prime 20.5 Acre Lot on Little Mantrap Lake! This 20.5-acre lakeshore property offers an unparalleled opportunity to build your lake home, with the flexibility to position your home just 15 feet from the water's edge. Nestled in a secluded yet accessible location, this lot combines privacy, natural beauty, and convenience. Recently accessed via a newly installed road, the property is easy to reach while maintaining a serene, peaceful atmosphere. Electricity is already available, making it ready for your ideal cabin or lakeside retreat. Perfect area for fishing, hunting, hiking, and exploring whether you're seeking outdoor adventure or peaceful relaxation. While the property feels worlds away, it's just a short drive to local amenities, including shopping, dining, and entertainment, so you never have to go far for everyday essentials. For those seeking privacy, tranquility, and unlimited access to nature—without sacrificing convenience—this is the ideal spot for your dream lakeside getaway. Come experience it for yourself!

Additional Details:

Lot Acres	20.5
Lot Dimensions	582x1282xIRR
School District	309
Taxes	(unreported)
Taxes with Assessments	(unreported)
Tax Year	2024

Additional Features:

Driving Directions:

From US Hwy 71, go west on County 46 for 2 miles, turn nth onto Brietbach Raod & go approx. one mile. Look for house #37105 and follow the arrows/signs to new road. (fork in the driveway, stay to the left.)



Listed By:
Your Home Sold Guaranteed Realty Exclusive

Affinity Real Estate Inc. participates in the Regional Multiple Listing Service of Minnesota, Inc Broker Reciprocity (sm) program, allowing us to display other broker's listings on our website. All properties are subject to prior sale, change or withdrawal.



Call Affinity Real Estate

218-237-3333

info@affinityrealestate.com



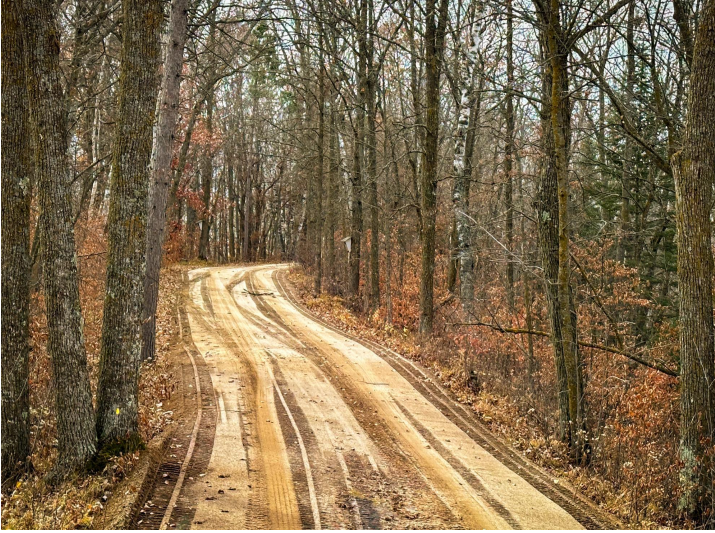
Affinity Real Estate - 600 Park Avenue South - Park Rapids MN 56470



website: www.AffinityRealEstate.com | email: info@affinityrealestate.com | office: 218-237-3333 | fax:218-237-3377



\$249,000
MLS 6636237 Lake Land
Tract C Brietbach Road
Park Rapids MN 56470



website: www.AffinityRealEstate.com | email: info@affinityrealestate.com | office: 218-237-3333 | fax:218-237-3377



\$249,000
MLS 6636237 Lake Land
Tract C Brietbach Road
Park Rapids MN 56470