



MLS 6636241 Residential

\$624,900

2,667 sq ft
5 bedrooms
3 baths

30970 Firewatch Way
Pequot Lakes MN 56472

Status: Active

Description:

Introducing the Homes on Firewatch Way, where comfort meets convenience! The Hemlock model features 5 bedrooms, 3 bathrooms, a bonus room + more with additional customization options available. Ideally positioned between Breezy Point and Pequot Lakes, this location offers a perfect blend of accessibility while living in the heart of Lakes Country. This ideal location also means families benefit from the highly regarded Pequot Lakes school district, with both Eagle View Elementary and Pequot Lakes High School located minutes away. Prospective homeowners also have the opportunity to reserve a lot and choose from various floorplans and finishes to create their ideal home.

Additional Details:

Year Built	2024
Lot Acres	1
Lot Dimensions	230x180x240x180
Garage Stalls	3
School District	186
Taxes	\$580
Taxes with Assessments	(unreported)
Tax Year	2023

Additional Features:

Fuel: Natural Gas **Heat:** Forced Air, Fireplace(s), Radiant Floor

Driving Directions:

From the stoplight intersection in Pequot Lakes (Patriot Ave & CR 11) - East on CR 11 through the overpass round-a-bouts - Property is on the right (south) approx. 1,800 feet past the round-a-bout



Listed By:
Woods to Water Real Estate

Affinity Real Estate Inc. participates in the Regional Multiple Listing Service of Minnesota, Inc Broker Reciprocity (sm) program, allowing us to display other broker's listings on our website. All properties are subject to prior sale, change or withdrawal.



Call Affinity Real Estate

218-237-3333

info@affinityrealestate.com



Affinity Real Estate - 600 Park Avenue South - Park Rapids MN 56470



website: www.AffinityRealEstate.com | email: info@affinityrealestate.com | office: 218-237-3333 | fax:218-237-3377



\$624,900
MLS 6636241 Residential
30970 Firewatch Way
Pequot Lakes MN 56472



website: www.AffinityRealEstate.com | email: info@affinityrealestate.com | office: 218-237-3333 | fax:218-237-3377



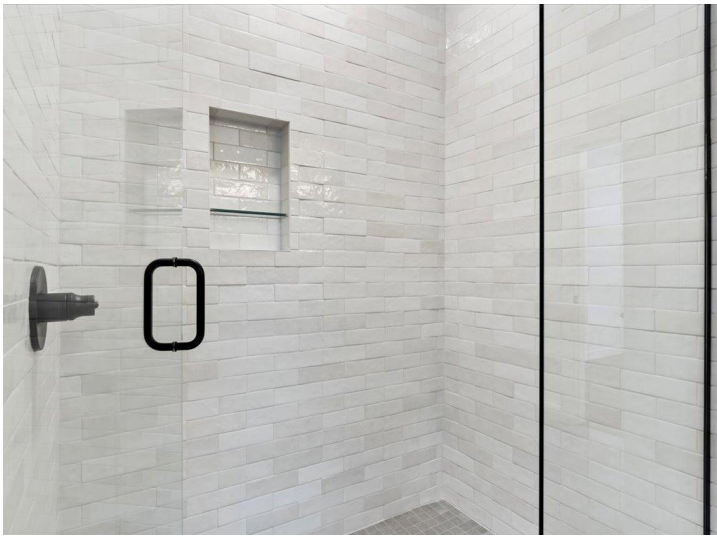
\$624,900
MLS 6636241 Residential
30970 Firewatch Way
Pequot Lakes MN 56472



website: www.AffinityRealEstate.com | email: info@affinityrealestate.com | office: 218-237-3333 | fax:218-237-3377



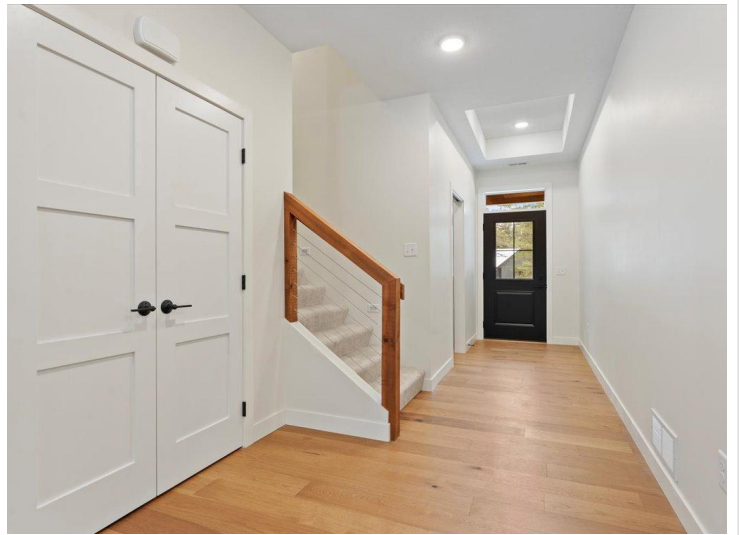
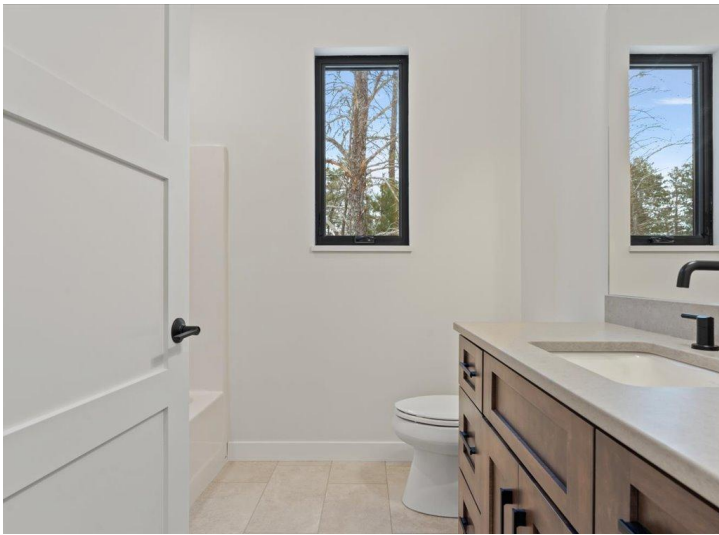
\$624,900
MLS 6636241 Residential
30970 Firewatch Way
Pequot Lakes MN 56472



website: www.AffinityRealEstate.com | email: info@affinityrealestate.com | office: 218-237-3333 | fax:218-237-3377



\$624,900
MLS 6636241 Residential
30970 Firewatch Way
Pequot Lakes MN 56472



website: www.AffinityRealEstate.com | email: info@affinityrealestate.com | office: 218-237-3333 | fax:218-237-3377



\$624,900
MLS 6636241 Residential
30970 Firewatch Way
Pequot Lakes MN 56472



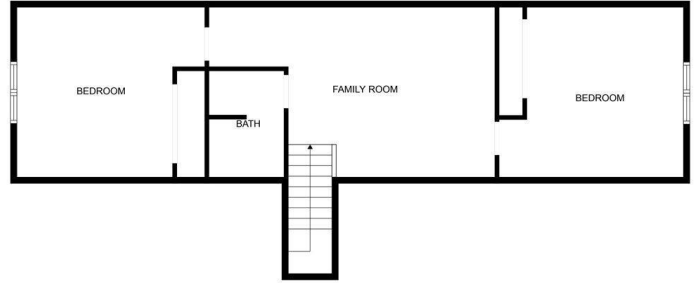
website: www.AffinityRealEstate.com | email: info@affinityrealestate.com | office: 218-237-3333 | fax:218-237-3377



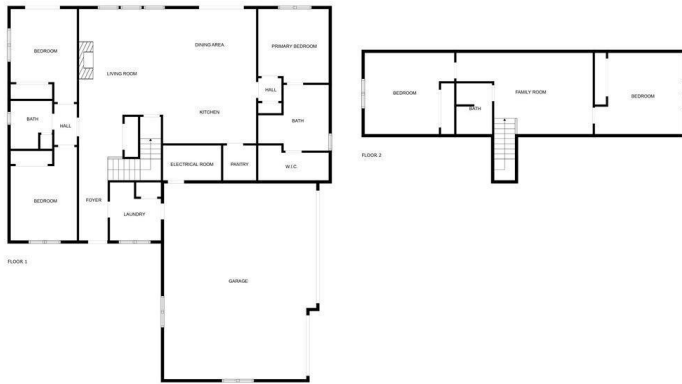
\$624,900
MLS 6636241 Residential
30970 Firewatch Way
Pequot Lakes MN 56472



FLOOR PLAN CREATED BY CUBSCASA APP. MEASUREMENTS DEEMED HIGHLY RELIABLE BUT NOT GUARANTEED.



FLOOR PLAN CREATED BY CUBSCASA APP. MEASUREMENTS DEEMED HIGHLY RELIABLE BUT NOT GUARANTEED.



FLOOR PLAN CREATED BY CUBSCASA APP. MEASUREMENTS DEEMED HIGHLY RELIABLE BUT NOT GUARANTEED.

website: www.AffinityRealEstate.com | email: info@affinityrealestate.com | office: 218-237-3333 | fax:218-237-3377



\$624,900
 MLS 6636241 Residential
 30970 Firewatch Way
 Pequot Lakes MN 56472