



MLS 6637020 Land

\$65,000

5 Acres
Subdivided

36594 County Highway 46
Park Rapids MN 56470

Status: Active

Description:

Escape to this stunning 5-acre property, complete with a deep well and septic system, providing the perfect foundation for your next adventure or peaceful getaway. This land offers access to power, ensuring convenience as you design your ideal home or cabin. Nature lovers will delight in the nearby Little Mantrap Lake, Two Inlets Lake, and Boot Lake, all just a stone's throw away. Whether you're into fishing, boating, or simply soaking in the serene surroundings, these beautiful lakes offer countless opportunities for recreation. Plus, with nearby public land, you'll have access to some of the best hunting and outdoor activities. 15 minute drive to the Headwaters of the Mississippi and Itasca State Park! Enjoy the freedom to explore vast landscapes, hike through nature, or unwind in your own private oasis. Don't miss your chance to own a slice of paradise where the beauty of nature meets modern amenities. Contact us today to learn more about this incredible opportunity!

Additional Details:

Lot Acres	5
Lot Dimensions	660x330x660x330
School District	309
Taxes	\$252
Taxes with Assessments	\$312
Tax Year	2024

Additional Features:

Driving Directions:

From Park Rapids intersection of hwy 34 & 71, North on 71 for 14 miles to a left onto county 41 continue straight for 3 miles to county 46 property on the right.



Listed By:
Wolff & Simon Real Estate

Affinity Real Estate Inc. participates in the Regional Multiple Listing Service of Minnesota, Inc Broker Reciprocity (sm) program, allowing us to display other broker's listings on our website. All properties are subject to prior sale, change or withdrawal.



Call Affinity Real Estate

218-237-3333

info@affinityrealestate.com



Affinity Real Estate - 600 Park Avenue South - Park Rapids MN 56470



website: www.AffinityRealEstate.com | email: info@affinityrealestate.com | office: 218-237-3333 | fax:218-237-3377

Affinity
REAL ESTATE INC

\$65,000
MLS 6637020 Land
36594 County Highway 46
Park Rapids MN 56470



website: www.AffinityRealEstate.com | email: info@affinityrealestate.com | office: 218-237-3333 | fax:218-237-3377



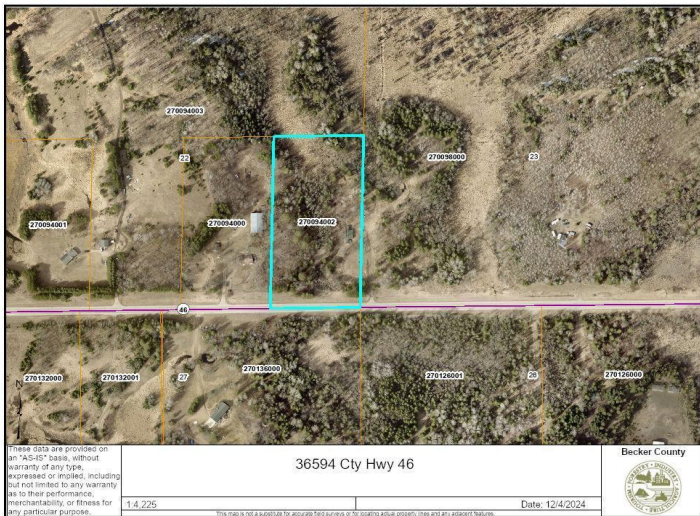
\$65,000
MLS 6637020 Land
36594 County Highway 46
Park Rapids MN 56470



website: www.AffinityRealEstate.com | email: info@affinityrealestate.com | office: 218-237-3333 | fax:218-237-3377

Affinity
REAL ESTATE INC

\$65,000
MLS 6637020 Land
36594 County Highway 46
Park Rapids MN 56470



website: www.AffinityRealEstate.com | email: info@affinityrealestate.com | office: 218-237-3333 | fax: 218-237-3377



\$65,000
 MLS 6637020 Land
 36594 County Highway 46
 Park Rapids MN 56470