



MLS 6637147 Lake Home

\$624,900

2,492 sq ft
4 bedrooms
2 baths

45350 Maple Shores Lane
Osage MN 56570

Waterfront: Shell

Status: Closed

Description:

Ready for summer fun? Don't miss this stunning 4-bedroom, 2-bathroom, 2,492 sq. ft. home on Shell Lake! Featuring a 3-season porch, this property also includes an additional lake lot and an optional pontoon and lift package for the ultimate lake lifestyle.

Meticulously maintained and thoughtfully updated, this home boasts a custom kitchen with granite countertops, a pantry, coffee bar and a convenient locker-style entry. The finished, heated 4-stall detached garage with an attached carport offers ample storage for all your toys and tools.

Enjoy breathtaking panoramic lake views from both the main and lower levels, perfectly complemented by the property's masterfully designed landscaping, which includes a drainage system for heavy rain and snowmelt.

Experience the serenity of Shell Lake and immerse yourself in nature's beauty at its finest. This is your chance to own a true gem – schedule your private showing today before it's gone! Professional photography coming Dec 10th.

Additional Details:

Year Built	1990
Lot Acres	2.14
Lot Dimensions	348x280
Garage Stalls	4
School District	23
Taxes	\$2,618
Taxes with Assessments	\$2,618
Tax Year	2024

Additional Features:

Basement: Daylight/Lookout Windows, Drainage System, 8 ft+ Pour, Finished, Full, Storage Space, Walkout **Fuel:** Propane **Garage:** 4 **Heat:** Forced Air **Sewer:** Tank with Drainage Field **Water:** Drilled, Private, Well **Air Conditioning:** Central Air

Driving Directions:



Listed By: MN 56570
Counselor Realty Detroit Lakes

Affinity Real Estate Inc. participates in the Regional Multiple Listing Service of Minnesota, Inc Broker Reciprocity (sm) program, allowing us to display other broker's listings on our website. All properties are subject to prior sale, change or withdrawal.



Call Affinity Real Estate

218-237-3333

info@affinityrealestate.com



Affinity Real Estate - 600 Park Avenue South - Park Rapids MN 56470



website: www.AffinityRealEstate.com | email: info@affinityrealestate.com | office: 218-237-3333 | fax: 218-237-3377

Affinity
REAL ESTATE INC

\$624,900

MLS 6637147 Lake Home
45350 Maple Shores Lane
Osage MN 56570



website: www.AffinityRealEstate.com | email: info@affinityrealestate.com | office: 218-237-3333 | fax: 218-237-3377

Affinity
REAL ESTATE INC

\$624,900
MLS 6637147 Lake Home
45350 Maple Shores Lane
Osage MN 56570



website: www.AffinityRealEstate.com | email: info@affinityrealestate.com | office: 218-237-3333 | fax: 218-237-3377

Affinity
REAL ESTATE INC

\$624,900
MLS 6637147 Lake Home
45350 Maple Shores Lane
Osage MN 56570



website: www.AffinityRealEstate.com | email: info@affinityrealestate.com | office: 218-237-3333 | fax: 218-237-3377

Affinity
REAL ESTATE INC

\$624,900
MLS 6637147 Lake Home
45350 Maple Shores Lane
Osage MN 56570

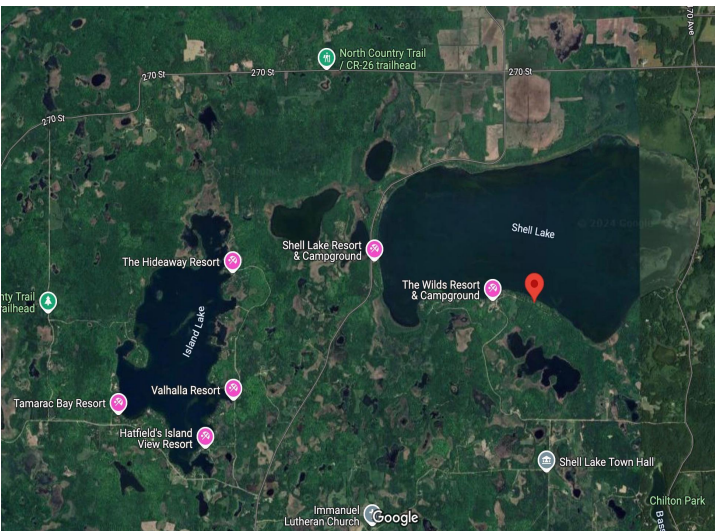


website: www.AffinityRealEstate.com | email: info@affinityrealestate.com | office: 218-237-3333 | fax: 218-237-3377



\$624,900

MLS 6637147 Lake Home
45350 Maple Shores Lane
Osage MN 56570



website: www.AffinityRealEstate.com | email: info@affinityrealestate.com | office: 218-237-3333 | fax: 218-237-3377



\$624,900
 MLS 6637147 Lake Home
 45350 Maple Shores Lane
 Osage MN 56570