

MLS 6638294 Land

**\$87,100**

34.84 Acres  
Raw Land

TBD Buttercup Lane Northwest  
Solway MN 56678

Status: Active

**Description:**

Diverse 34.84 acres located only 7 miles west of Bemidji. Property is made up of mature and new growth pine/spruce trees along with some species of deciduous trees mixed in throughout. (Primarily Popple/Aspen) Low ground/swamp runs across the property from the NE to the SW which provides some great wildlife habitat and a gas line utility easement runs across the property from the NW to the SE. Property intersects a pond in the NE corner. Bordered by thousands of acres of state land on the backside of the property. Explore with the county of Beltrami on a building location in the NW corner. This property lends itself to many recreational activities, especially hunting. A habitat plan or a wide range of conservation plans would be a great option to explore for this property. Expect to find deer, turkeys, bear, grouse and small game for legal game species. Easy access to and from the property from Highway 2 and close to many amenities in the City of Bemidji.

**Additional Details:**

Lot Acres	34.84
Lot Dimensions	1,155x1320x1140x1326
School District	31
Taxes	\$432
Taxes with Assessments	\$432
Tax Year	2023

**Additional Features:**

**Driving Directions:**

From Bemidji, travel west on Highway 2 for 6 miles. Take left on Buttercup lane. Go half mile and property at the curve/T. On your left.



Listed By:  
Base Camp Country Real Estate

Affinity Real Estate Inc. participates in the Regional Multiple Listing Service of Minnesota, Inc Broker Reciprocity (sm) program, allowing us to display other broker's listings on our website. All properties are subject to prior sale, change or withdrawal.



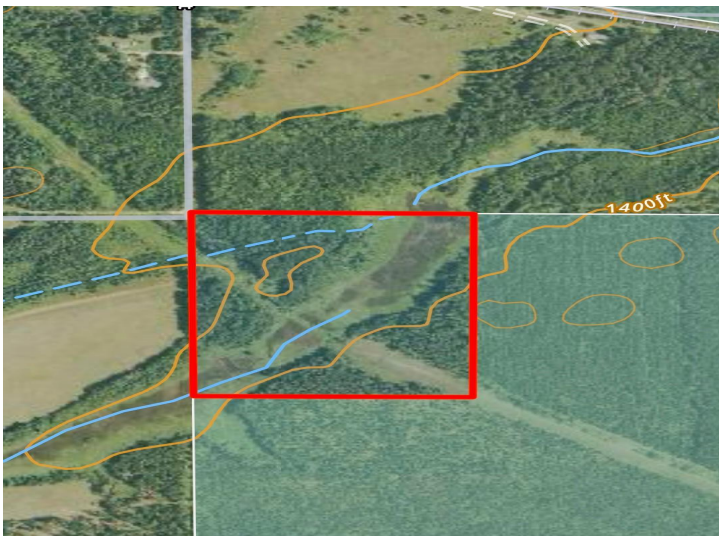
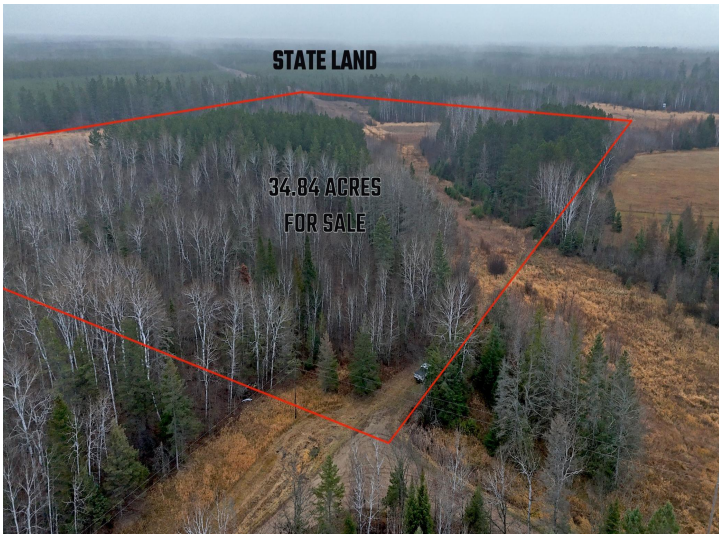
**Call Affinity Real Estate**

**218-237-3333**

**info@affinityrealestate.com**



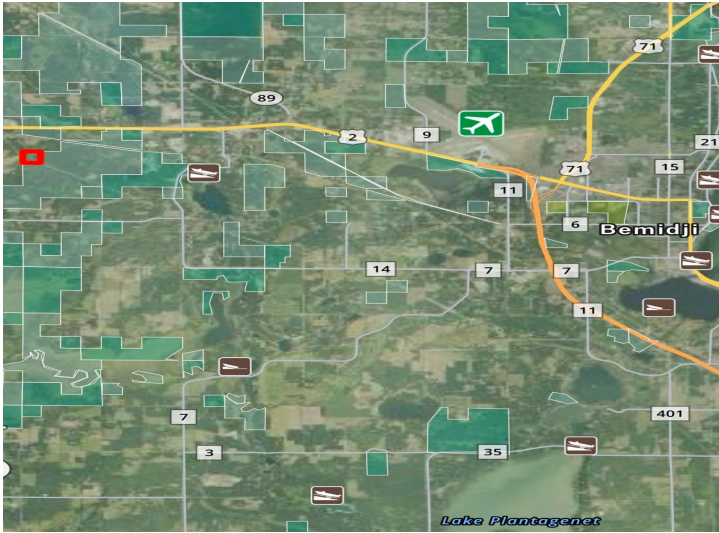
**Affinity Real Estate - 600 Park Avenue South - Park Rapids MN 56470**



website: [www.AffinityRealEstate.com](http://www.AffinityRealEstate.com) | email: [info@affinityrealestate.com](mailto:info@affinityrealestate.com) | office: 218-237-3333 | fax: 218-237-3377



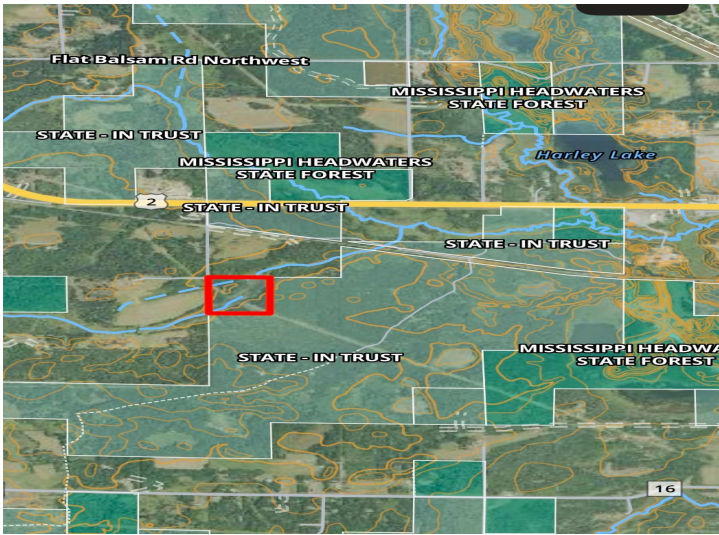
**\$87,100**  
MLS 6638294 Land  
TBD Buttercup Lane  
Northwest  
Solway MN 56678



website: [www.AffinityRealEstate.com](http://www.AffinityRealEstate.com) | email: [info@affinityrealestate.com](mailto:info@affinityrealestate.com) | office: 218-237-3333 | fax:218-237-3377



**\$87,100**  
MLS 6638294 Land  
TBD Buttercup Lane  
Northwest  
Solway MN 56678



website: [www.AffinityRealEstate.com](http://www.AffinityRealEstate.com) | email: [info@affinityrealestate.com](mailto:info@affinityrealestate.com) | office: 218-237-3333 | fax: 218-237-3377

**Affinity**  
REAL ESTATE INC

**\$87,100**

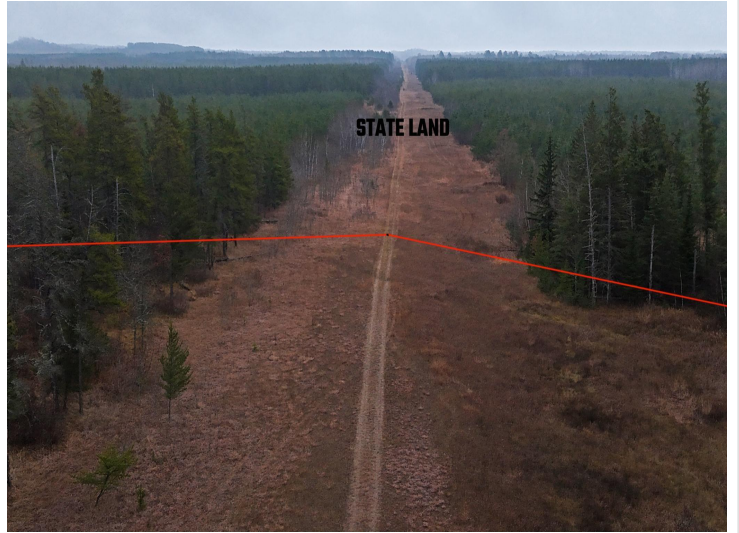
MLS 6638294 Land  
TBD Buttercup Lane  
Northwest  
Solway MN 56678



website: [www.AffinityRealEstate.com](http://www.AffinityRealEstate.com) | email: [info@affinityrealestate.com](mailto:info@affinityrealestate.com) | office: 218-237-3333 | fax:218-237-3377



**\$87,100**  
MLS 6638294 Land  
TBD Buttercup Lane  
Northwest  
Solway MN 56678



website: [www.AffinityRealEstate.com](http://www.AffinityRealEstate.com) | email: [info@affinityrealestate.com](mailto:info@affinityrealestate.com) | office: 218-237-3333 | fax:218-237-3377



**\$87,100**  
MLS 6638294 Land  
TBD Buttercup Lane  
Northwest  
Solway MN 56678



website: [www.AffinityRealEstate.com](http://www.AffinityRealEstate.com) | email: [info@affinityrealestate.com](mailto:info@affinityrealestate.com) | office: 218-237-3333 | fax:218-237-3377



**\$87,100**

MLS 6638294 Land  
TBD Buttercup Lane  
Northwest  
Solway MN 56678



website: [www.AffinityRealEstate.com](http://www.AffinityRealEstate.com) | email: [info@affinityrealestate.com](mailto:info@affinityrealestate.com) | office: 218-237-3333 | fax:218-237-3377



**\$87,100**  
MLS 6638294 Land  
TBD Buttercup Lane  
Northwest  
Solway MN 56678