



MLS 6638442 Residential

\$500,000

1,602 sq ft
4 bedrooms
2 baths

1610 Redstone Trail
Pequot Lakes MN 56472

Status: Pending

Description:

Sold before print.

Additional Details:

Year Built	2020
Lot Acres	2.5
Lot Dimensions	71x293x293x364x306
Garage Stalls	4
School District	186
Taxes	\$2,046
Taxes with Assessments	\$2,046
Tax Year	2024

Additional Features:

Fuel: Electric, Propane **Heat:** Boiler, Ductless Mini-Split, Radiant Floor

Driving Directions:

From Nisswa, North on 371 to a left (West) on County Road 29 to a right (North) on 17th Ave SW (Jacobs Road), to a right (East) on Redstone Trail SW to home on left.



Listed By:
eXp Realty

Affinity Real Estate Inc. participates in the Regional Multiple Listing Service of Minnesota, Inc Broker Reciprocity (sm) program, allowing us to display other broker's listings on our website. All properties are subject to prior sale, change or withdrawal.



Call Affinity Real Estate

218-237-3333

info@affinityrealestate.com



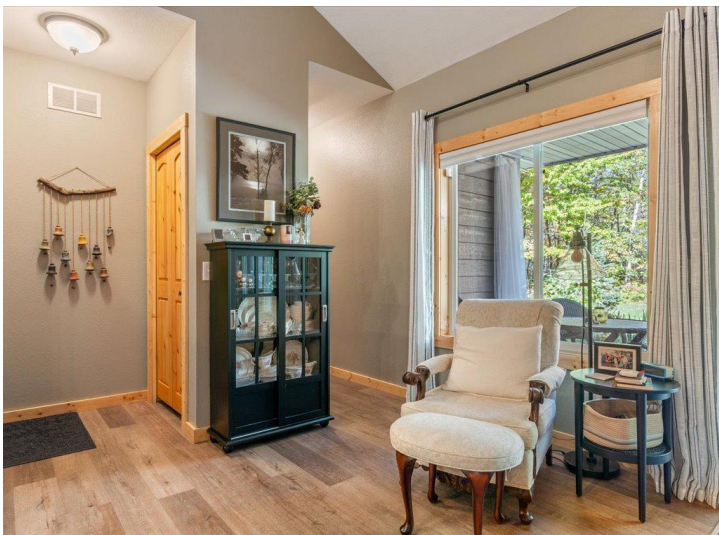
Affinity Real Estate - 600 Park Avenue South - Park Rapids MN 56470



website: www.AffinityRealEstate.com | email: info@affinityrealestate.com | office: 218-237-3333 | fax:218-237-3377



\$500,000
MLS 6638442 Residential
1610 Redstone Trail
Pequot Lakes MN 56472



website: www.AffinityRealEstate.com | email: info@affinityrealestate.com | office: 218-237-3333 | fax:218-237-3377

Affinity
REAL ESTATE INC

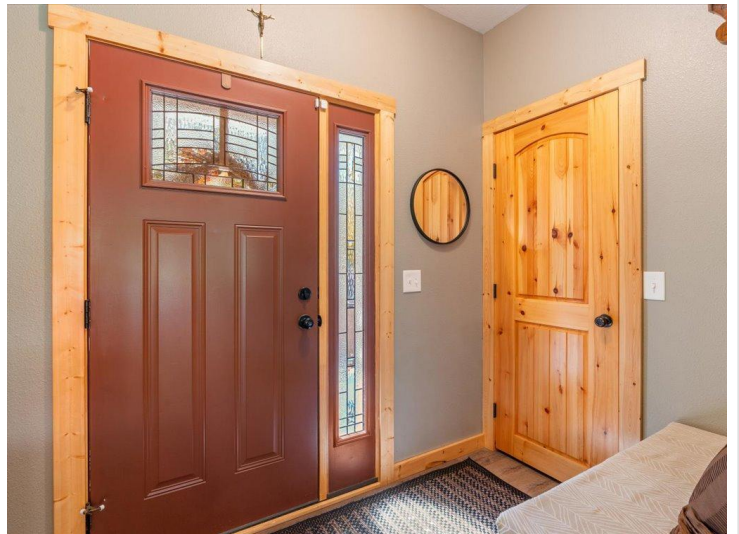
\$500,000
MLS 6638442 Residential
1610 Redstone Trail
Pequot Lakes MN 56472



website: www.AffinityRealEstate.com | email: info@affinityrealestate.com | office: 218-237-3333 | fax:218-237-3377

Affinity
REAL ESTATE INC

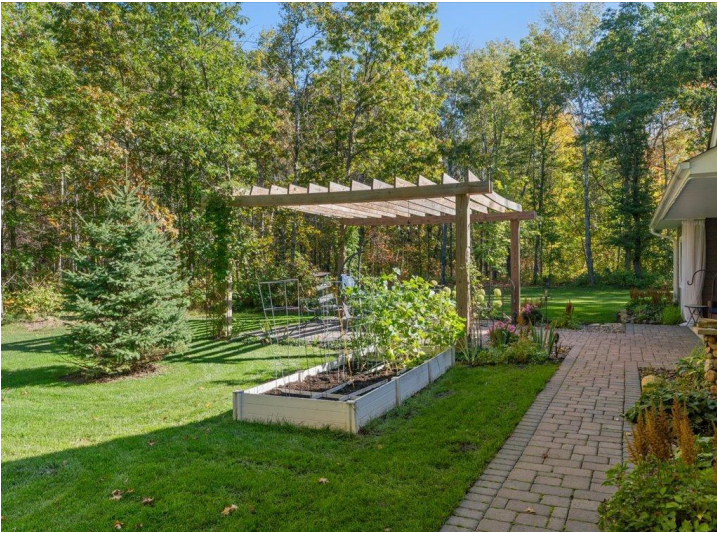
\$500,000
MLS 6638442 Residential
1610 Redstone Trail
Pequot Lakes MN 56472



website: www.AffinityRealEstate.com | email: info@affinityrealestate.com | office: 218-237-3333 | fax: 218-237-3377

Affinity
REAL ESTATE INC

\$500,000
MLS 6638442 Residential
1610 Redstone Trail
Pequot Lakes MN 56472



website: www.AffinityRealEstate.com | email: info@affinityrealestate.com | office: 218-237-3333 | fax:218-237-3377

Affinity
REAL ESTATE INC

\$500,000
MLS 6638442 Residential
1610 Redstone Trail
Pequot Lakes MN 56472



website: www.AffinityRealEstate.com | email: info@affinityrealestate.com | office: 218-237-3333 | fax:218-237-3377



\$500,000
MLS 6638442 Residential
1610 Redstone Trail
Pequot Lakes MN 56472



website: www.AffinityRealEstate.com | email: info@affinityrealestate.com | office: 218-237-3333 | fax:218-237-3377



\$500,000
MLS 6638442 Residential
1610 Redstone Trail
Pequot Lakes MN 56472



website: www.AffinityRealEstate.com | email: info@affinityrealestate.com | office: 218-237-3333 | fax:218-237-3377



\$500,000
MLS 6638442 Residential
1610 Redstone Trail
Pequot Lakes MN 56472