



MLS 6639212 Residential

\$159,900

1,054 sq ft
3 bedrooms
1 baths

203 State 34
Nevis MN 56467

Status: Active

Description:

Discover this charming home in Nevis City, offering 3 bedrooms and 1 well-appointed bathroom, all featuring elegant vinyl flooring. The property includes a remarkable detached shop measuring 26 x 50 feet, complete with 4 garage doors, perfect for your projects or hobbies. Set on 1.25 acres, this home is conveniently located across the road from the scenic Heartland Trail, and just minutes from the vibrant downtown Nevis and the beautiful Paul Bunyan State Forest. Don't miss out on this ideal blend of comfort and accessibility! Seller is open to contract for deed financing.

Additional Details:

Year Built	1920
Lot Acres	1.25
Lot Dimensions	320x213x145x288
Garage Stalls	4
School District	308
Taxes	\$1,572
Taxes with Assessments	\$1,782
Tax Year	2024

Additional Features:

Basement: Block **Fuel:** Oil **Garage:** 4 **Heat:** Forced Air **Sewer:** City Sewer/Connected **Water:** City Water/Connected **Air Conditioning:** Central Air

Driving Directions:

From Nevis Highway 34 and County 2, head East on Hwy 34 to property on left.



Listed By:
Wolff & Simon Real Estate

Affinity Real Estate Inc. participates in the Regional Multiple Listing Service of Minnesota, Inc Broker Reciprocity (sm) program, allowing us to display other broker's listings on our website. All properties are subject to prior sale, change or withdrawal.



Call Affinity Real Estate

218-237-3333

info@affinityrealestate.com



Affinity Real Estate - 600 Park Avenue South - Park Rapids MN 56470



website: www.AffinityRealEstate.com | email: info@affinityrealestate.com | office: 218-237-3333 | fax:218-237-3377

Affinity
REAL ESTATE INC

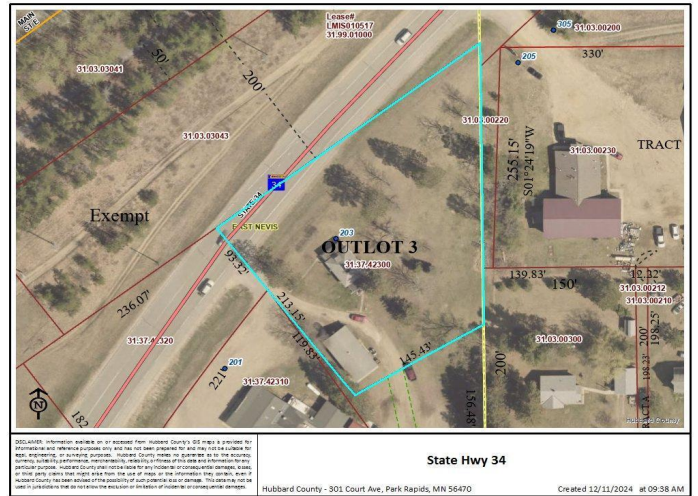
\$159,900
MLS 6639212 Residential
203 State 34
Nevis MN 56467



website: www.AffinityRealEstate.com | email: info@affinityrealestate.com | office: 218-237-3333 | fax:218-237-3377



\$159,900
MLS 6639212 Residential
203 State 34
Nevis MN 56467



website: www.AffinityRealEstate.com | email: info@affinityrealestate.com | office: 218-237-3333 | fax: 218-237-3377



\$159,900
 MLS 6639212 Residential
 203 State 34
 Nevis MN 56467