



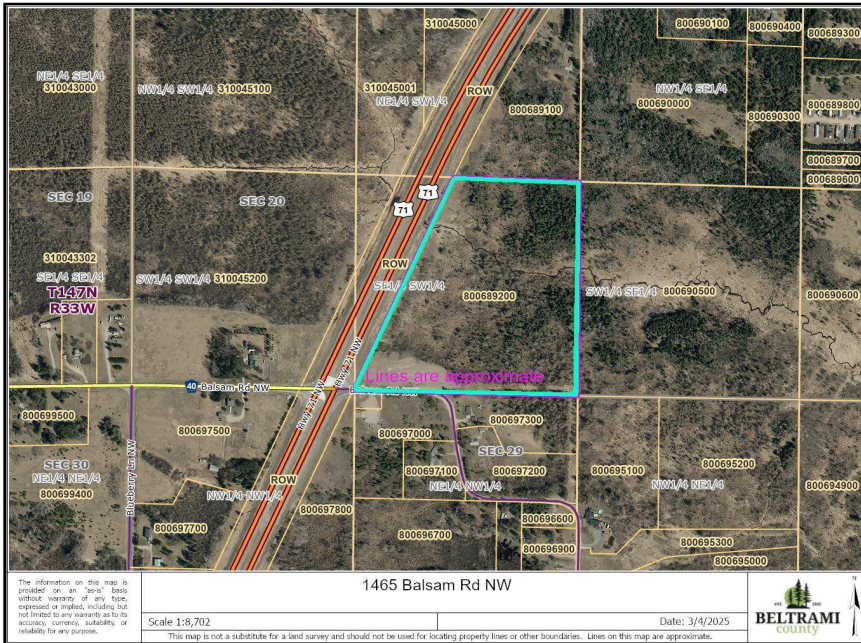
MLS 6639444 Land

\$199,900

24.28 Acres
Raw Land

1465 Balsam Road
Bemidji MN 56601

Status: Active



Description:

Just over 24 acres in Bemidji off Highway 71. Build your business here! Convenient access to the highway, over 1,400 feet of very visible frontage, and quick to town.

Additional Details:

Lot Acres	24.28
Lot Dimensions	irregular
School District	31
Taxes	\$626
Taxes with Assessments	\$626
Tax Year	2024

Additional Features:

Driving Directions:

From Anne St and 71 roundabout: north on Hwy 71 to right on Balsam Rd NW, then left at the property.



Listed By:
Realty Experts, LLC

Affinity Real Estate Inc. participates in the Regional Multiple Listing Service of Minnesota, Inc Broker Reciprocity (sm) program, allowing us to display other broker's listings on our website. All properties are subject to prior sale, change or withdrawal.



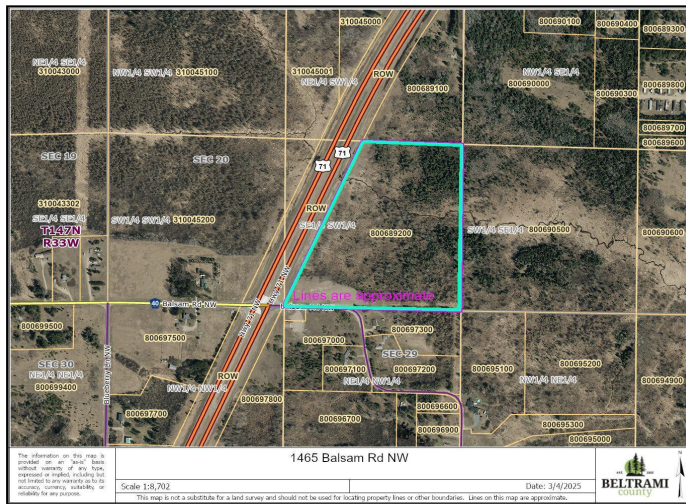
Call Affinity Real Estate

218-237-3333

info@affinityrealestate.com



Affinity Real Estate - 600 Park Avenue South - Park Rapids MN 56470



website: www.AffinityRealEstate.com | email: info@affinityrealestate.com | office: 218-237-3333 | fax: 218-237-3377



\$199,900
 MLS 6639444 Land
 1465 Balsam Road
 Bemidji MN 56601