



MLS 6639543 Land

\$79,000

3.53 Acres
Finished Lot(s)

447XX Co Hwy 14
Perham MN 56573

Status: Active

Description:

Discover the perfect blend of Privacy and Convenience on this 3.53-Acre Property located between Ottertail and Perham. With Hwy 14 Frontage and just half a mile from the Sportsman's Club North Access on Rush Lake, this Property offers an ideal setting for your Dream Home, a Hunting Retreat, or Weekend Camping Trips.

The Build Site is already Cleared, with Electrical Hookups in place for an RV or Fish House. Surrounded by a well-established Shelter Belt of Towering Pines, Ash Trees, and Amur Maples, this Park-Like Setting provides ample Shade and Seclusion. The West and North Boundaries are Fenced for added Privacy and Security.

Situated in the Heart of Lakes Country, this Property is within 10 Miles of 20 Stunning Lakes, including Rush, Otter Tail, Marion, Star, Dead, Little Pine, and Big Pine. Whether you're looking to Build, Relax, or Explore, this Property offers Endless Possibilities.

Additional Details:

Lot Acres	3.53
Lot Dimensions	341 x 442 x 354 x 442
School District	549
Taxes	\$220
Taxes with Assessments	\$220
Tax Year	2024

Additional Features:

Driving Directions:

Take Hwy 78 South from Perham until Co Hwy 14, then turn left. After 0.8 Miles, turn left, then immediately left again onto a dirt road. The property will be the first turn on the right side.



Listed By:
Jack Chivers Realty

Affinity Real Estate Inc. participates in the Regional Multiple Listing Service of Minnesota, Inc Broker Reciprocity (sm) program, allowing us to display other broker's listings on our website. All properties are subject to prior sale, change or withdrawal.



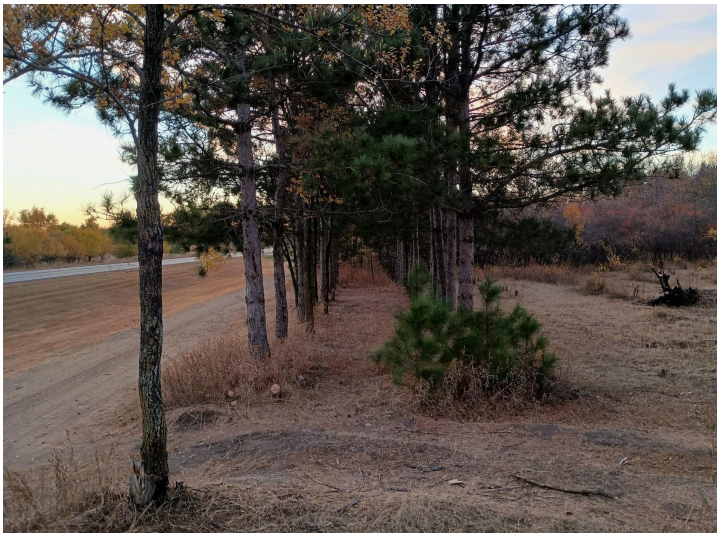
Call Affinity Real Estate

218-237-3333

info@affinityrealestate.com



Affinity Real Estate - 600 Park Avenue South - Park Rapids MN 56470



website: www.AffinityRealEstate.com | email: info@affinityrealestate.com | office: 218-237-3333 | fax:218-237-3377

Affinity
REAL ESTATE INC

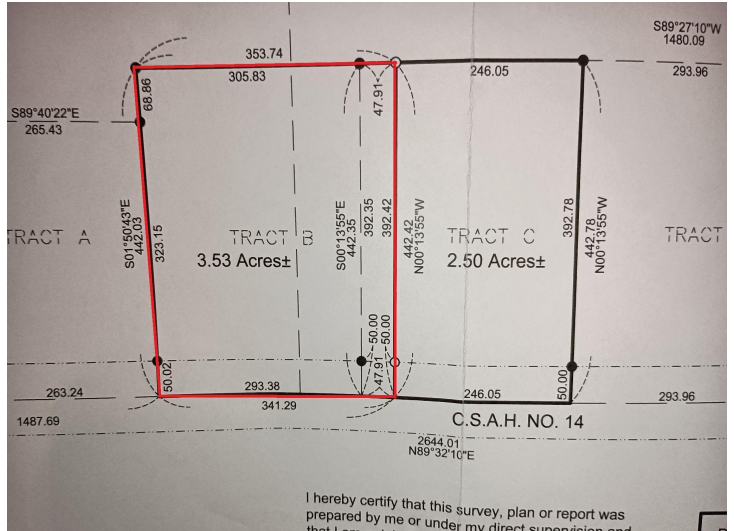
\$79,000
MLS 6639543 Land
447XX Co Hwy 14
Perham MN 56573



website: www.AffinityRealEstate.com | email: info@affinityrealestate.com | office: 218-237-3333 | fax:218-237-3377

Affinity
REAL ESTATE INC

\$79,000
MLS 6639543 Land
447XX Co Hwy 14
Perham MN 56573



website: www.AffinityRealEstate.com | email: info@affinityrealestate.com | office: 218-237-3333 | fax: 218-237-3377



\$79,000
 MLS 6639543 Land
 447XX Co Hwy 14
 Perham MN 56573



website: www.AffinityRealEstate.com | email: info@affinityrealestate.com | office: 218-237-3333 | fax:218-237-3377



\$79,000
MLS 6639543 Land
447XX Co Hwy 14
Perham MN 56573