



MLS 6639665 Land

\$42,500

0.37 Acres
Raw Land

2309 Calihan Avenue
Bemidji MN 56601

Status: Pending

Description:

This prime city lot near Bemidji State University offers an excellent opportunity for anyone looking to build in a desirable location. It features convenient access to natural gas, city sewer, and city water services. The lot is just a short distance from Lake Bemidji, providing easy access to the beach and scenic walking paths. Nearby parks offer a variety of recreational options, such as areas for playing, picnicking, birdwatching, and relaxing, making this an ideal place to build a home or investment property.

Additional Details:

Lot Acres	0.37
Lot Dimensions	98x165
School District	31
Taxes	\$372
Taxes with Assessments	\$372
Tax Year	2024

Additional Features:

Driving Directions:

From Bemidji Ave N: travel east on 23rd St, left on Calihan Ave. Lot is on the west side of road.



Listed By:
Century 21 Dickinson

Affinity Real Estate Inc. participates in the Regional Multiple Listing Service of Minnesota, Inc Broker Reciprocity (sm) program, allowing us to display other broker's listings on our website. All properties are subject to prior sale, change or withdrawal.



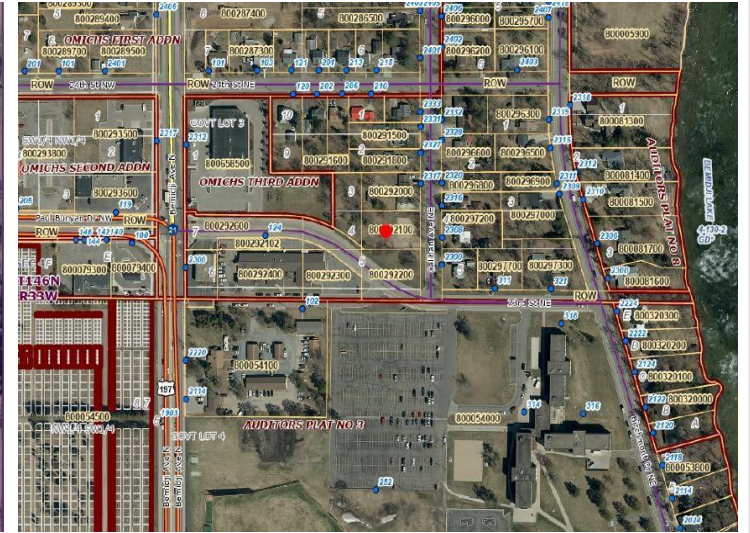
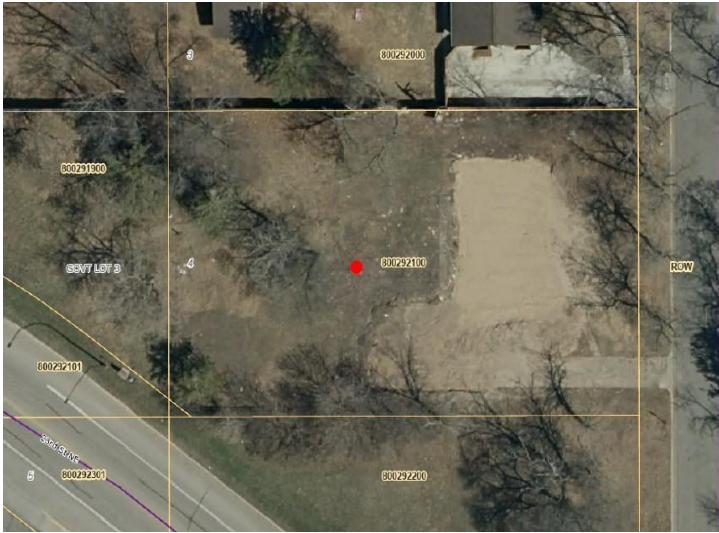
Call Affinity Real Estate

218-237-3333

info@affinityrealestate.com



Affinity Real Estate - 600 Park Avenue South - Park Rapids MN 56470



website: www.AffinityRealEstate.com | email: info@affinityrealestate.com | office: 218-237-3333 | fax: 218-237-3377



\$42,500
MLS 6639665 Land
2309 Calihan Avenue
Bemidji MN 56601