



MLS 6640209 Land

\$156,000

39.99 Acres
Raw Land

xxx Pine Mountain Lake Road
Backus MN 56435

Status: Active

Description:

40 acres of good hunting ground in prime location near Pine Mountain Lake and the Foothills State Forest. There is a nice open building/camping site the remainder is densely wooded with mostly Cedar & Hardwoods. Access to numerous atv/snowmobile trails nearby.

Additional Details:

Lot Acres	39.99
Lot Dimensions	1320x1320
School District	2174
Taxes	\$384
Taxes with Assessments	\$384
Tax Year	2024

Additional Features:

Driving Directions:

North from Backus on Front St/45th Ave for approx 2 miles to left on Pine Mountain Lake Rd. Continue .9 miles to property, sign, and red gate on left.



Listed By:
Rusty's Up North Realty

Affinity Real Estate Inc. participates in the Regional Multiple Listing Service of Minnesota, Inc Broker Reciprocity (sm) program, allowing us to display other broker's listings on our website. All properties are subject to prior sale, change or withdrawal.



Call Affinity Real Estate

218-237-3333

info@affinityrealestate.com



Affinity Real Estate - 600 Park Avenue South - Park Rapids MN 56470



website: www.AffinityRealEstate.com | email: info@affinityrealestate.com | office: 218-237-3333 | fax:218-237-3377



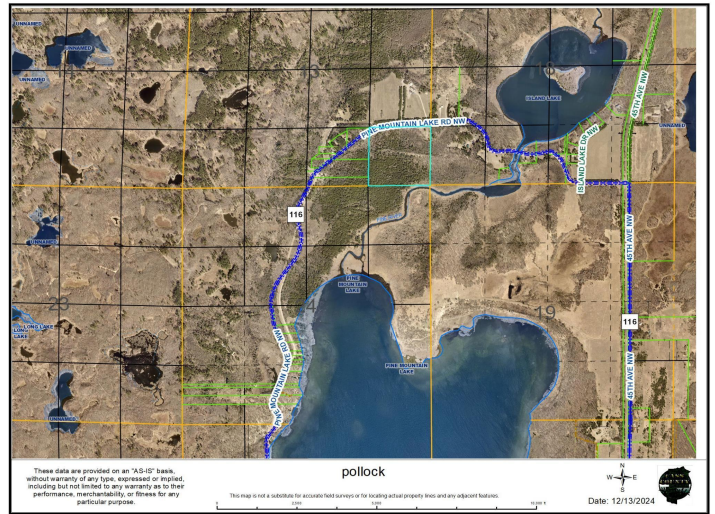
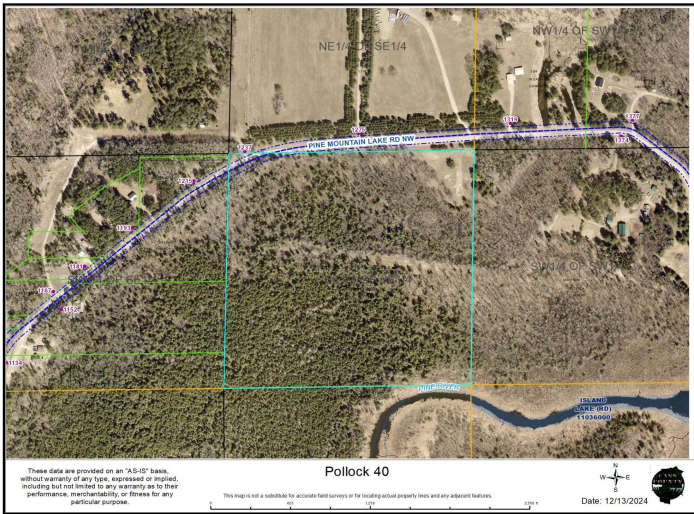
\$156,000
MLS 6640209 Land
xxx Pine Mountain Lake
Road
Backus MN 56435



website: www.AffinityRealEstate.com | email: info@affinityrealestate.com | office: 218-237-3333 | fax:218-237-3377



\$156,000
MLS 6640209 Land
xxx Pine Mountain Lake
Road
Backus MN 56435



website: www.AffinityRealEstate.com | email: info@affinityrealestate.com | office: 218-237-3333 | fax:218-237-3377



\$156,000
 MLS 6640209 Land
 xxx Pine Mountain Lake
 Road
 Backus MN 56435