



MLS 6640610 Lake Home

\$359,000

1,196 sq ft
3 bedrooms
2 baths

23104 Asthre Drive
Battle Lake MN 56515

Waterfront: Unnamed Lake

Status: Pending

Description:

Quiet, private 3 bedroom 2 bath home located 2 miles north of Battle Lake. This solid built home located on 26 acres with beautiful views, is located in the heart of lakes country within 10 minutes of many crystal clear lakes and boat accesses. Battle lake is known for its many restaurants, boutique shops and creative art. Along with golf courses and paved bike paths this is a great place to live.

The main level could use some updates and the unfinished basement has 2 egress windows for more bedrooms or a blank slate on which to finish off to your own taste. The property also offers an attached double garage. A definite must see!

Additional Details:

Year Built	1978
Lot Acres	26.63
Lot Dimensions	26.63
Garage Stalls	2
School District	542
Taxes	\$1,288
Taxes with Assessments	\$1,288
Tax Year	2024

Additional Features:

Basement: Full **Fuel:** Propane **Garage:** 2 **Heat:** Forced Air **Sewer:** Private Sewer **Water:** Sand Point **Air Conditioning:** Central Air

Driving Directions:

from Battle Lake go north on Hwy 78 to South Silver Lake Rd. Follow to West Silver Lake Rd. Go north to Astre Drive. First house on the left.



Listed By:
Weichert RE - Paulson Land Co

Affinity Real Estate Inc. participates in the Regional Multiple Listing Service of Minnesota, Inc Broker Reciprocity (sm) program, allowing us to display other broker's listings on our website. All properties are subject to prior sale, change or withdrawal.



Call Affinity Real Estate

218-237-3333

info@affinityrealestate.com



Affinity Real Estate - 600 Park Avenue South - Park Rapids MN 56470



website: www.AffinityRealEstate.com | email: info@affinityrealestate.com | office: 218-237-3333 | fax: 218-237-3377



\$359,000
 MLS 6640610 Lake Home
 23104 Asthre Drive
 Battle Lake MN 56515



website: www.AffinityRealEstate.com | email: info@affinityrealestate.com | office: 218-237-3333 | fax: 218-237-3377



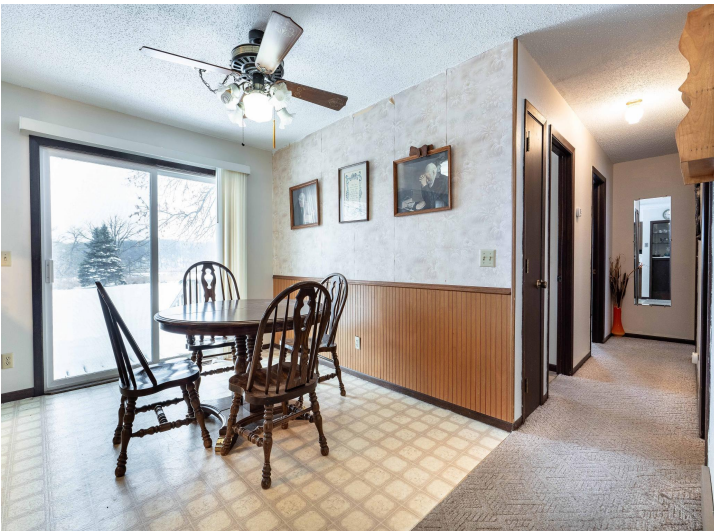
\$359,000
MLS 6640610 Lake Home
23104 Asthre Drive
Battle Lake MN 56515



website: www.AffinityRealEstate.com | email: info@affinityrealestate.com | office: 218-237-3333 | fax: 218-237-3377



\$359,000
MLS 6640610 Lake Home
23104 Asthre Drive
Battle Lake MN 56515



website: www.AffinityRealEstate.com | email: info@affinityrealestate.com | office: 218-237-3333 | fax: 218-237-3377



\$359,000
 MLS 6640610 Lake Home
 23104 Asthre Drive
 Battle Lake MN 56515



website: www.AffinityRealEstate.com | email: info@affinityrealestate.com | office: 218-237-3333 | fax: 218-237-3377

Affinity
REAL ESTATE INC

\$359,000
MLS 6640610 Lake Home
23104 Asthre Drive
Battle Lake MN 56515



website: www.AffinityRealEstate.com | email: info@affinityrealestate.com | office: 218-237-3333 | fax: 218-237-3377

Affinity
REAL ESTATE INC

\$359,000
MLS 6640610 Lake Home
23104 Asthre Drive
Battle Lake MN 56515



website: www.AffinityRealEstate.com | email: info@affinityrealestate.com | office: 218-237-3333 | fax: 218-237-3377



\$359,000
 MLS 6640610 Lake Home
 23104 Asthre Drive
 Battle Lake MN 56515



website: www.AffinityRealEstate.com | email: info@affinityrealestate.com | office: 218-237-3333 | fax: 218-237-3377



\$359,000

MLS 6640610 Lake Home
23104 Asthre Drive
Battle Lake MN 56515