



MLS 6641228 Residential

\$369,900

1,728 sq ft
3 bedrooms
2 baths

12354 83rd Avenue
Motley MN 56466

Status: Pending

Description:

Nestled on 5 peaceful acres, this fully remodeled home at 12354 83rd Ave SW in Motley is a rare find. The property features a massive heated and cooled shop, complete with living quarters and an office—perfect for hobbies, business, or additional space to entertain. Modern upgrades throughout the home ensure comfortable living, while the expansive lot provides endless opportunities for outdoor enjoyment. This is the ideal blend of modern convenience and country charm!

Additional Details:

Year Built	1980
Lot Acres	5.04
Lot Dimensions	430 x 509
Garage Stalls	4
School District	2170
Taxes	\$1,818
Taxes with Assessments	\$1,818
Tax Year	2024

Additional Features:

Fuel: Propane **Heat:** Forced Air

Driving Directions:

From US 10W, turn R onto 210E then left onto MN 64N then turn left onto 120th Street SW and then Left onto 83rd Ave SW then your destination will be on the left.



Listed By:
RE/MAX Results

Affinity Real Estate Inc. participates in the Regional Multiple Listing Service of Minnesota, Inc Broker Reciprocity (sm) program, allowing us to display other broker's listings on our website. All properties are subject to prior sale, change or withdrawal.



Call Affinity Real Estate

218-237-3333

info@affinityrealestate.com



Affinity Real Estate - 600 Park Avenue South - Park Rapids MN 56470



website: www.AffinityRealEstate.com | email: info@affinityrealestate.com | office: 218-237-3333 | fax: 218-237-3377

Affinity
REAL ESTATE INC

\$369,900
MLS 6641228 Residential
12354 83rd Avenue
Motley MN 56466



website: www.AffinityRealEstate.com | email: info@affinityrealestate.com | office: 218-237-3333 | fax:218-237-3377

Affinity
REAL ESTATE INC

\$369,900
MLS 6641228 Residential
12354 83rd Avenue
Motley MN 56466



website: www.AffinityRealEstate.com | email: info@affinityrealestate.com | office: 218-237-3333 | fax:218-237-3377

Affinity
REAL ESTATE INC

\$369,900
MLS 6641228 Residential
12354 83rd Avenue
Motley MN 56466



website: www.AffinityRealEstate.com | email: info@affinityrealestate.com | office: 218-237-3333 | fax: 218-237-3377

Affinity
REAL ESTATE INC

\$369,900
MLS 6641228 Residential
12354 83rd Avenue
Motley MN 56466



website: www.AffinityRealEstate.com | email: info@affinityrealestate.com | office: 218-237-3333 | fax:218-237-3377

Affinity
REAL ESTATE INC

\$369,900
MLS 6641228 Residential
12354 83rd Avenue
Motley MN 56466



website: www.AffinityRealEstate.com | email: info@affinityrealestate.com | office: 218-237-3333 | fax:218-237-3377



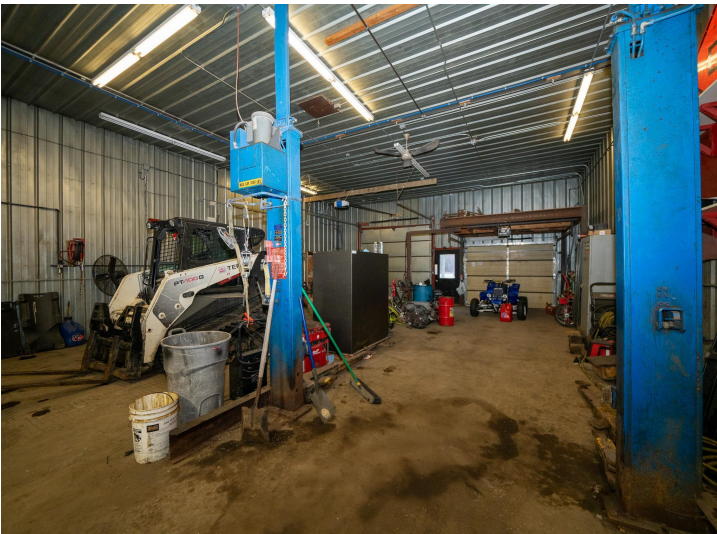
\$369,900
MLS 6641228 Residential
12354 83rd Avenue
Motley MN 56466



website: www.AffinityRealEstate.com | email: info@affinityrealestate.com | office: 218-237-3333 | fax:218-237-3377

Affinity
REAL ESTATE INC

\$369,900
MLS 6641228 Residential
12354 83rd Avenue
Motley MN 56466



website: www.AffinityRealEstate.com | email: info@affinityrealestate.com | office: 218-237-3333 | fax: 218-237-3377

Affinity
REAL ESTATE INC

\$369,900
MLS 6641228 Residential
12354 83rd Avenue
Motley MN 56466



website: www.AffinityRealEstate.com | email: info@affinityrealestate.com | office: 218-237-3333 | fax:218-237-3377



\$369,900
MLS 6641228 Residential
12354 83rd Avenue
Motley MN 56466