

MLS 6641787 Land

\$55,000

8.6 Acres
Raw Land

TBD 100th Street
Laporte MN 56461

Status: Active

Description:

8.6 acres fully wooded with a gorgeous bldg site already brushed out. Seller has installed electricity nearly to edge of this property (cost \$5,000). Located just 5 minutes north of Walker. Parklike setting, Laden with mature oaks, very private. Deer & Turkeys often seen. Camping, RV, no minimum bldg. size, mobile home, pole shed, all permissible. Sets among 30 acres only split into 4 parcels, no further subdividing permissible so your privacy is maintained.

Additional Details:

Lot Acres	8.6
Lot Dimensions	150x395x534x564x423x1312
School District	306
Taxes	(unreported)
Taxes with Assessments	(unreported)
Tax Year	2024

Additional Features:

Driving Directions:

Directions From Walker, go north on MN-371 for 5.5 miles and turn left onto Cass Co 62. Go 1 block. Property on right. Sign on Property.



Listed By:
askRICK.com dba Walker Area Realty

Affinity Real Estate Inc. participates in the Regional Multiple Listing Service of Minnesota, Inc Broker Reciprocity (sm) program, allowing us to display other broker's listings on our website. All properties are subject to prior sale, change or withdrawal.



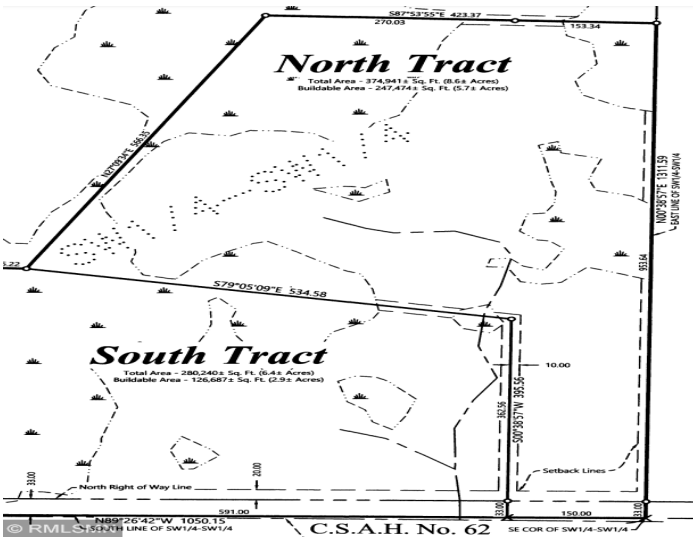
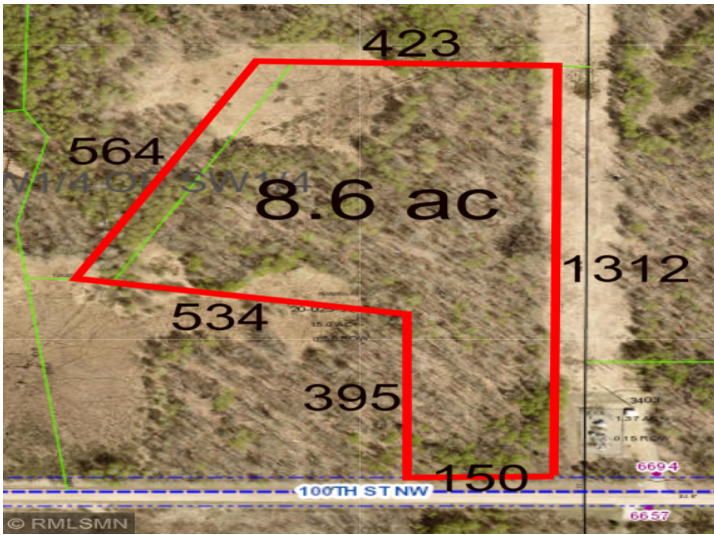
Call Affinity Real Estate

218-237-3333

info@affinityrealestate.com



Affinity Real Estate - 600 Park Avenue South - Park Rapids MN 56470



website: www.AffinityRealEstate.com | email: info@affinityrealestate.com | office: 218-237-3333 | fax: 218-237-3377



\$55,000
 MLS 6641787 Land
 TBD 100th Street
 Laporte MN 56461