



MLS 6642603 Residential

\$299,900

2,911 sq ft
3 bedrooms
3 baths

21565 County 1
Park Rapids MN 56470

Status: Pending

Description:

A Park Rapids treasure! A truly unique home tucked beautifully among the tall pines. Room to roam on this 5.7 acres (three parcels) this property offers a functioning 3 bed, 3 bath home with a refreshed exterior, newer 7-zone high efficiency gas Navien boiler, attached 3 stall garage, fenced in back yard, fenced garden spaces, horseshoe driveway and more- must see to appreciate! The home offers an upper-level primary bedroom, full bathroom and large walk-in closet. The main floor has a large living room with wood burning fireplace and vaulted ceiling, an extra-large kitchen/dining room with a walk-out to the back yard for easy entertaining, and two bedrooms with a shared full bath. The lower level has a finished laundry room and ¾ bath. Bring your visions and finish the lower level to your liking or use as-is for workshop/storage areas with access to the garage. Potential for a 4th bedroom with added egress window too! Schedule your showing today!

Additional Details:

Year Built	1976
Lot Acres	5.71
Lot Dimensions	5.71 Acres
Garage Stalls	3
School District	309
Taxes	\$2,566
Taxes with Assessments	\$2,776
Tax Year	2024

Additional Features:

Basement: Block, Partially Finished **Fuel:** Propane **Garage:** 3 **Heat:** Boiler, Outdoor Boiler, Zoned **Sewer:** Tank with Drainage Field **Water:** Well
Air Conditioning: Window Unit(s)

Driving Directions:

From Park Rapids, head North on Central Ave, continue onto County 1 past Fishhook Lake, property will be on your left



Listed By:
Edina Realty, Inc.

Affinity Real Estate Inc. participates in the Regional Multiple Listing Service of Minnesota, Inc Broker Reciprocity (sm) program, allowing us to display other broker's listings on our website. All properties are subject to prior sale, change or withdrawal.



Call Affinity Real Estate

218-237-3333

info@affinityrealestate.com



Affinity Real Estate - 600 Park Avenue South - Park Rapids MN 56470



website: www.AffinityRealEstate.com | email: info@affinityrealestate.com | office: 218-237-3333 | fax:218-237-3377

Affinity
REAL ESTATE INC

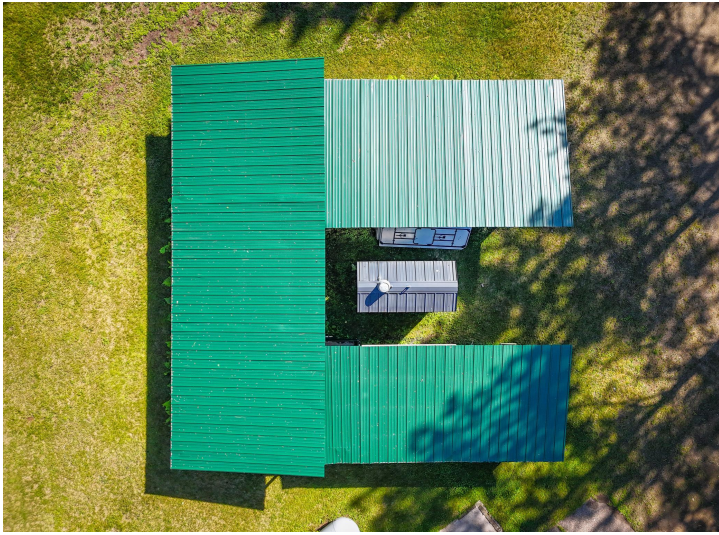
\$299,900
MLS 6642603 Residential
21565 County 1
Park Rapids MN 56470



website: www.AffinityRealEstate.com | email: info@affinityrealestate.com | office: 218-237-3333 | fax:218-237-3377

Affinity
REAL ESTATE INC

\$299,900
MLS 6642603 Residential
21565 County 1
Park Rapids MN 56470



website: www.AffinityRealEstate.com | email: info@affinityrealestate.com | office: 218-237-3333 | fax:218-237-3377



\$299,900
MLS 6642603 Residential
21565 County 1
Park Rapids MN 56470



website: www.AffinityRealEstate.com | email: info@affinityrealestate.com | office: 218-237-3333 | fax:218-237-3377

Affinity
REAL ESTATE INC

\$299,900
MLS 6642603 Residential
21565 County 1
Park Rapids MN 56470



website: www.AffinityRealEstate.com | email: info@affinityrealestate.com | office: 218-237-3333 | fax:218-237-3377



\$299,900
MLS 6642603 Residential
21565 County 1
Park Rapids MN 56470



website: www.AffinityRealEstate.com | email: info@affinityrealestate.com | office: 218-237-3333 | fax:218-237-3377

Affinity
REAL ESTATE INC

\$299,900
MLS 6642603 Residential
21565 County 1
Park Rapids MN 56470