



MLS 6643998 Residential

\$824,900

4,311 sq ft
4 bedrooms
4 baths

35139 Clamshell Drive
Pequot Lakes MN 56472

Status: Active

Description:

Don't miss this four bedroom, four bath Executive home within walking distance of Whitefish Chain. Home features an impressive entryway, two story living room with gas fireplace, an open floor plan, Hickory cabinets, hardwood floors, primary suite with bath and jacuzzi tub, a full finished basement, theater room, screened in porch and an attached garage. Also, additional storage / garage which is partially heated and features an office, bath and totals 7,620 square feet in size. There is a ton of potential with the property. This is a must see.

Additional Details:

Year Built	2005
Lot Acres	2.68
Lot Dimensions	468x250
Garage Stalls	20
School District	186
Taxes	\$3,944
Taxes with Assessments	\$3,944
Tax Year	2024

Additional Features:

Basement: Block, Finished, Full **Fuel:** Natural Gas **Garage:** 20 **Heat:** Forced Air **Sewer:** Private Sewer, Tank with Drainage Field **Water:** Drilled, Well **Air Conditioning:** Central Air

Driving Directions:

From Crosslake - South on #66 to West on #103 to North on #39 to West on #16 to Right on S Clamshell Drive, to home on Left.



Listed By:
eXp Realty

Affinity Real Estate Inc. participates in the Regional Multiple Listing Service of Minnesota, Inc Broker Reciprocity (sm) program, allowing us to display other broker's listings on our website. All properties are subject to prior sale, change or withdrawal.



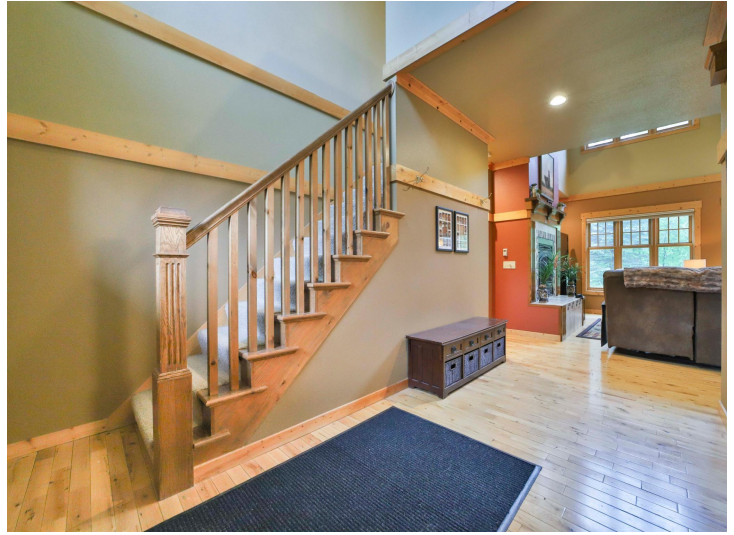
Call Affinity Real Estate

218-237-3333

info@affinityrealestate.com



Affinity Real Estate - 600 Park Avenue South - Park Rapids MN 56470



website: www.AffinityRealEstate.com | email: info@affinityrealestate.com | office: 218-237-3333 | fax: 218-237-3377

Affinity
REAL ESTATE INC

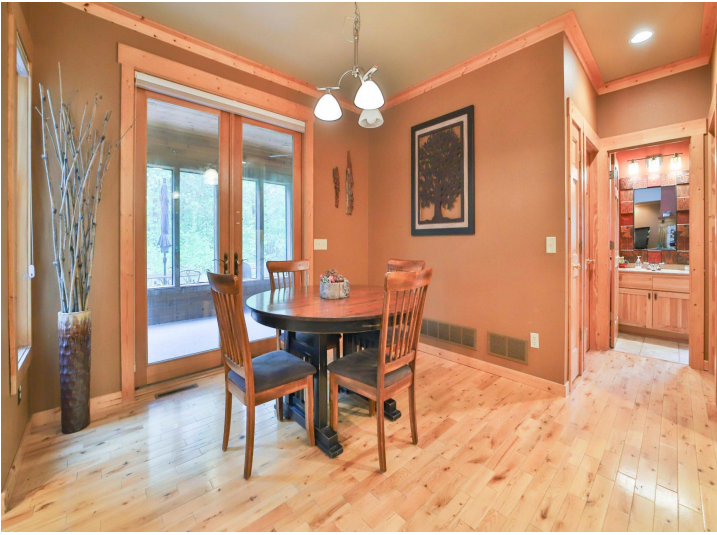
\$824,900
MLS 6643998 Residential
35139 Clamshell Drive
Pequot Lakes MN 56472



website: www.AffinityRealEstate.com | email: info@affinityrealestate.com | office: 218-237-3333 | fax:218-237-3377



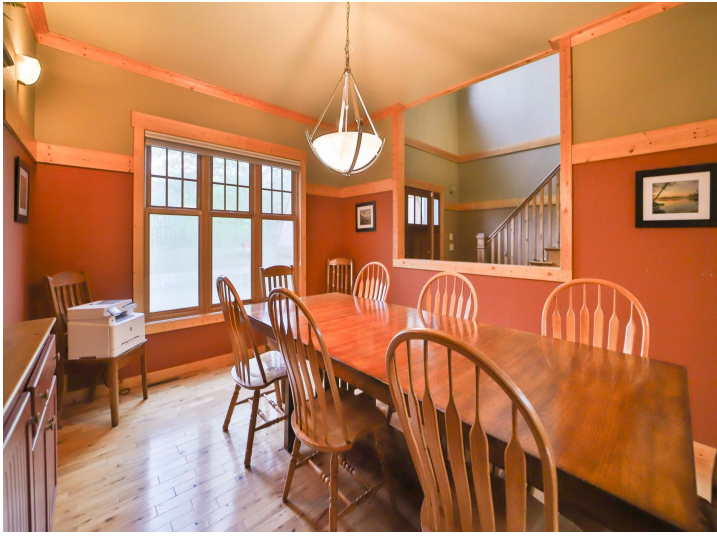
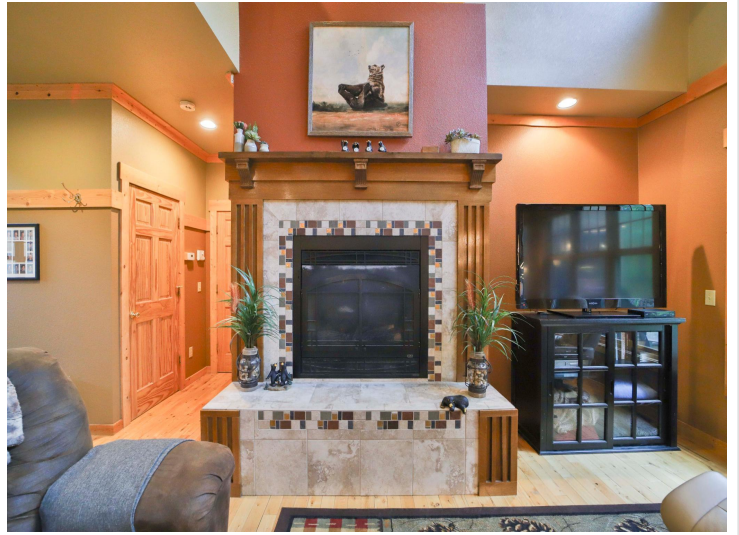
\$824,900
MLS 6643998 Residential
35139 Clamshell Drive
Pequot Lakes MN 56472



website: www.AffinityRealEstate.com | email: info@affinityrealestate.com | office: 218-237-3333 | fax: 218-237-3377

Affinity
REAL ESTATE INC

\$824,900
MLS 6643998 Residential
35139 Clamshell Drive
Pequot Lakes MN 56472



website: www.AffinityRealEstate.com | email: info@affinityrealestate.com | office: 218-237-3333 | fax: 218-237-3377

Affinity
REAL ESTATE INC

\$824,900
MLS 6643998 Residential
35139 Clamshell Drive
Pequot Lakes MN 56472



website: www.AffinityRealEstate.com | email: info@affinityrealestate.com | office: 218-237-3333 | fax:218-237-3377

Affinity
REAL ESTATE INC

\$824,900
MLS 6643998 Residential
35139 Clamshell Drive
Pequot Lakes MN 56472



website: www.AffinityRealEstate.com | email: info@affinityrealestate.com | office: 218-237-3333 | fax:218-237-3377

Affinity
REAL ESTATE INC

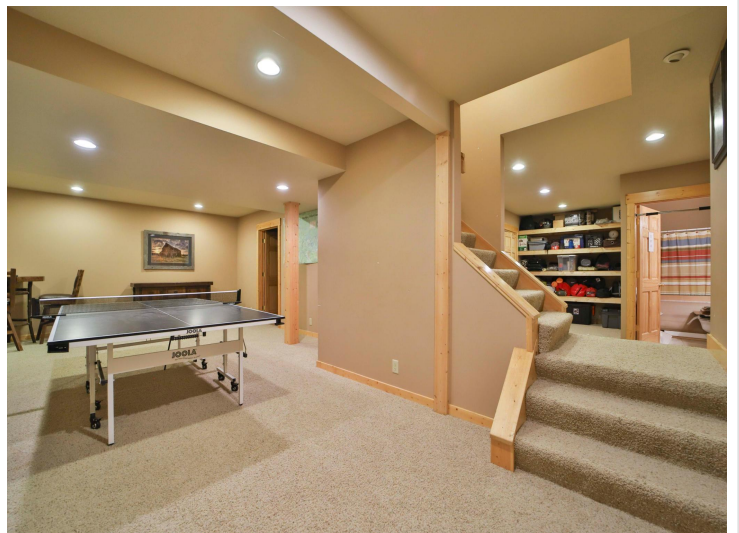
\$824,900
MLS 6643998 Residential
35139 Clamshell Drive
Pequot Lakes MN 56472



website: www.AffinityRealEstate.com | email: info@affinityrealestate.com | office: 218-237-3333 | fax:218-237-3377

Affinity
REAL ESTATE INC

\$824,900
MLS 6643998 Residential
35139 Clamshell Drive
Pequot Lakes MN 56472



website: www.AffinityRealEstate.com | email: info@affinityrealestate.com | office: 218-237-3333 | fax:218-237-3377

Affinity
REAL ESTATE INC

\$824,900
MLS 6643998 Residential
35139 Clamshell Drive
Pequot Lakes MN 56472



website: www.AffinityRealEstate.com | email: info@affinityrealestate.com | office: 218-237-3333 | fax:218-237-3377



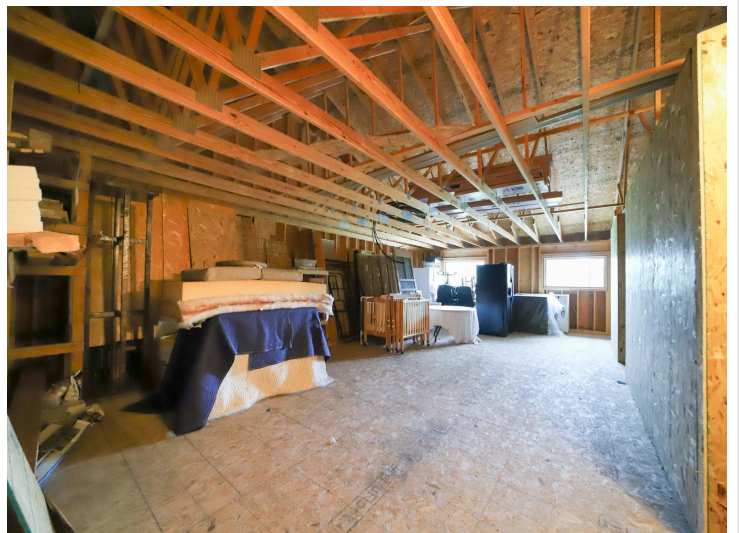
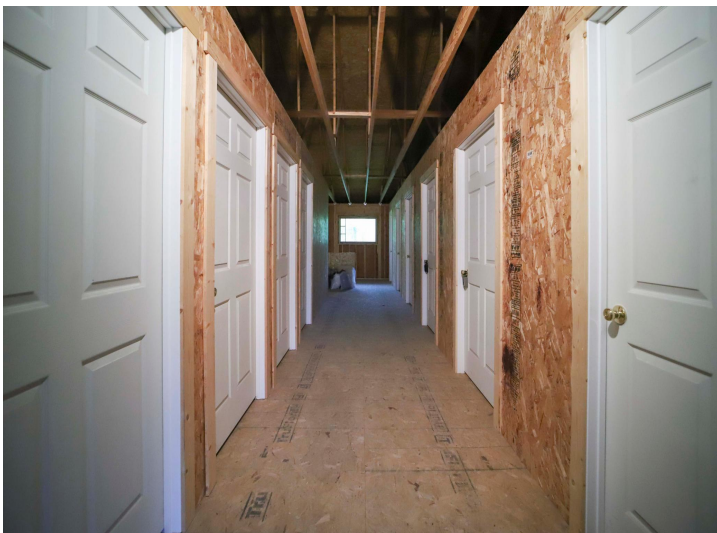
\$824,900
MLS 6643998 Residential
35139 Clamshell Drive
Pequot Lakes MN 56472



website: www.AffinityRealEstate.com | email: info@affinityrealestate.com | office: 218-237-3333 | fax:218-237-3377

Affinity
REAL ESTATE INC

\$824,900
MLS 6643998 Residential
35139 Clamshell Drive
Pequot Lakes MN 56472



website: www.AffinityRealEstate.com | email: info@affinityrealestate.com | office: 218-237-3333 | fax:218-237-3377

Affinity
REAL ESTATE INC

\$824,900
MLS 6643998 Residential
35139 Clamshell Drive
Pequot Lakes MN 56472



website: www.AffinityRealEstate.com | email: info@affinityrealestate.com | office: 218-237-3333 | fax:218-237-3377



\$824,900
MLS 6643998 Residential
35139 Clamshell Drive
Pequot Lakes MN 56472