



MLS 6644122 Lake Land

\$799,900

Description:

The perfect site for your Gull Lake Home to be built! With a panoramic South facing view. This lot offers an exceptional opportunity to experience luxury lakeside living. This meticulously maintained property offers 104' of great hard sand beach with a newer septic system for up to a 4 bedroom home and a drilled well. By the water you will find a 12x20 building with ample storage on the lower level and an upper level bunk/sleeping area. There is an elevator to the lake plus an additional 8x12 storage shed. A full survey of the property has been completed.

Additional Details:

Lot Acres	0.66
Lot Dimensions	104x303x100x267
School District	181
Taxes	\$6,400
Taxes with Assessments	\$6,466
Tax Year	2024

Additional Features:

Driving Directions:

West on County Rd 77, Past Lake Shore City Hall to Fire #8708 on the left



Listed By:
LPT Realty, LLC

Affinity Real Estate Inc. participates in the Regional Multiple Listing Service of Minnesota, Inc Broker Reciprocity (sm) program, allowing us to display other broker's listings on our website. All properties are subject to prior sale, change or withdrawal.



Call Affinity Real Estate

218-237-3333

info@affinityrealestate.com



Affinity Real Estate - 600 Park Avenue South - Park Rapids MN 56470



website: www.AffinityRealEstate.com | email: info@affinityrealestate.com | office: 218-237-3333 | fax:218-237-3377

Affinity
REAL ESTATE INC

\$799,900
MLS 6644122 Lake Land
8708 Interlachen Road
Nisswa MN 56468



website: www.AffinityRealEstate.com | email: info@affinityrealestate.com | office: 218-237-3333 | fax:218-237-3377

Affinity
REAL ESTATE INC

\$799,900
MLS 6644122 Lake Land
8708 Interlachen Road
Nisswa MN 56468



website: www.AffinityRealEstate.com | email: info@affinityrealestate.com | office: 218-237-3333 | fax:218-237-3377



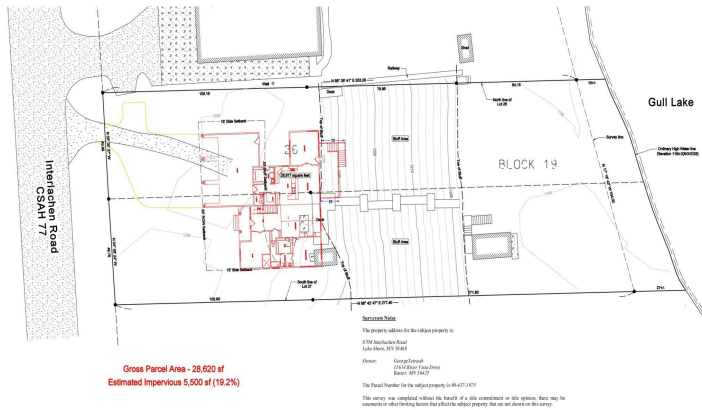
\$799,900
MLS 6644122 Lake Land
8708 Interlachen Road
Nisswa MN 56468



website: www.AffinityRealEstate.com | email: info@affinityrealestate.com | office: 218-237-3333 | fax:218-237-3377



\$799,900
MLS 6644122 Lake Land
8708 Interlachen Road
Nisswa MN 56468



website: www.AffinityRealEstate.com | email: info@affinityrealestate.com | office: 218-237-3333 | fax:218-237-3377



\$799,900
 MLS 6644122 Lake Land
 8708 Interlachen Road
 Nisswa MN 56468