



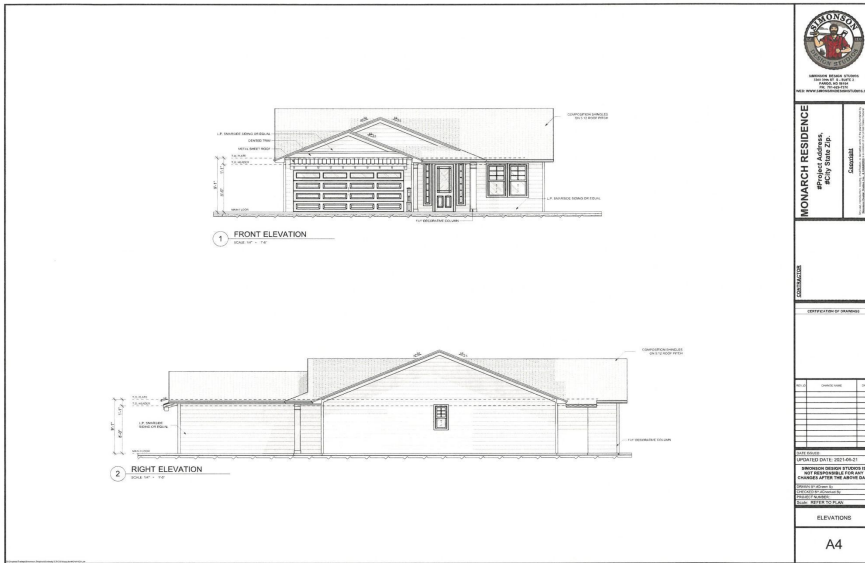
MLS 6644691 Residential

\$367,500

1,730 sq ft
3 bedrooms
2 baths

TBD Moonlight Lane
Bemidji MN 56601

Status: Pending



Description:

PEND BEFORE PRINT

Additional Details:

Year Built	2025
Lot Acres	0.26
Lot Dimensions	83x246x66x216
Garage Stalls	2
School District	31
Taxes	\$326
Taxes with Assessments	\$326
Tax Year	2024

Additional Features:

Basement: Slab **Fuel:** Natural Gas **Garage:** 2 **Heat:** Ductless Mini-Split, Hot Water, Radiant Floor **Sewer:** City Sewer/Connected **Water:** City Water/Connected **Air Conditioning:** Ductless Mini-Split

Driving Directions:

South on Washington Ave S to Shedhorn St SW. Right on Shedhorn St SW to Moonlight Ln SW. Right on Moonlight, lot on the left.



Listed By:
Better Homes and Gardens Real Estate First Cho

Affinity Real Estate Inc. participates in the Regional Multiple Listing Service of Minnesota, Inc Broker Reciprocity (sm) program, allowing us to display other broker's listings on our website. All properties are subject to prior sale, change or withdrawal.



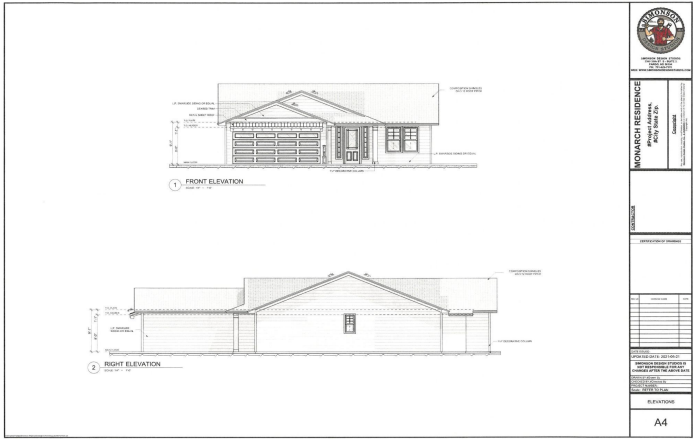
Call Affinity Real Estate

218-237-3333

info@affinityrealestate.com



Affinity Real Estate - 600 Park Avenue South - Park Rapids MN 56470



website: www.AffinityRealEstate.com | email: info@affinityrealestate.com | office: 218-237-3333 | fax:218-237-3377



\$367,500
 MLS 6644691 Residential
 TBD Moonlight Lane
 Bemidji MN 56601